

**Panama City Beach
Future Land Use
(2009 - 2020)**

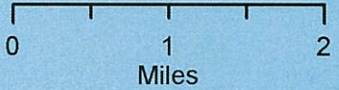
August 2009

Gulf of Mexico

West Bay

**Exhibit
2**

- | | |
|------------------------------|-----------------------------|
| Future Land Use | Ward Lines |
| Agricultural | TCEA |
| Conservation | Lake Powell Protection Zone |
| Educational | Parcels |
| Historical Resources | PCB City Limits |
| Industrial District | |
| Mixed Use | |
| Multi-Family Residential | |
| Public Buildings and Grounds | |
| Recreation | |
| Single-Family Residential | |
| Tourist District | |



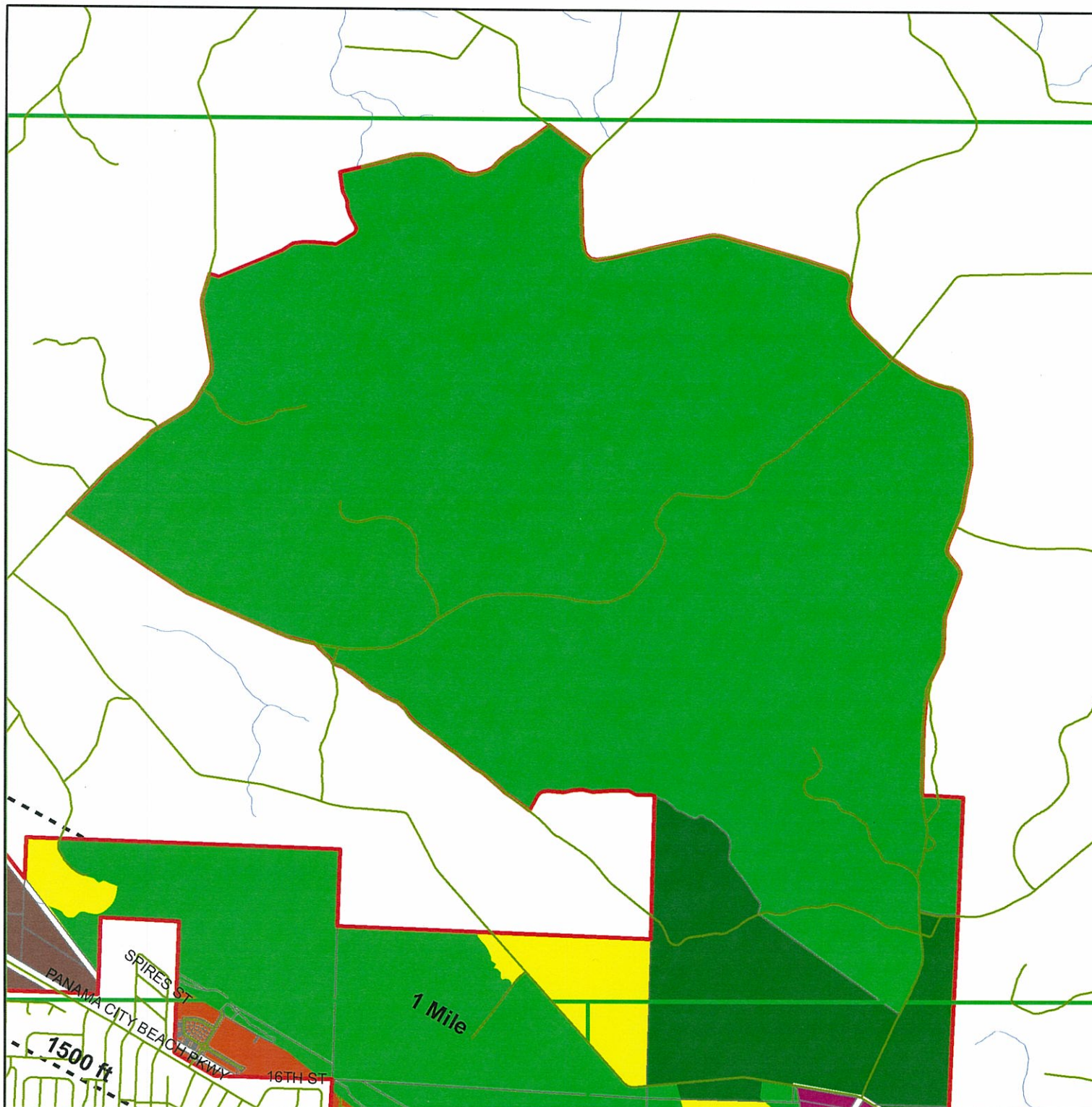
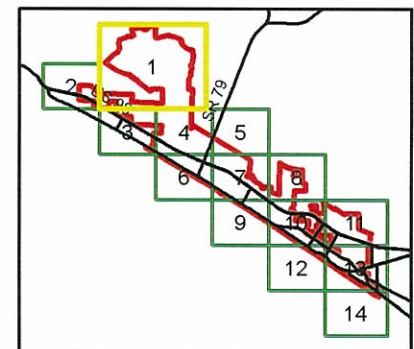
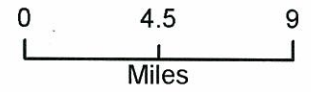
This GIS data is not a legal representation of the features depicted, any assumption of the legal status of this data is hereby disclaimed.

Bay County GIS Division, Aug 2009, PCB FLU, dac

Panama City Beach Future Land Use (2009 - 2020)



August 2009

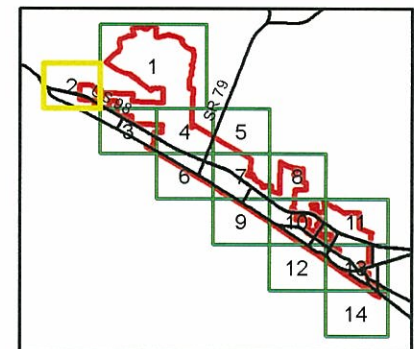
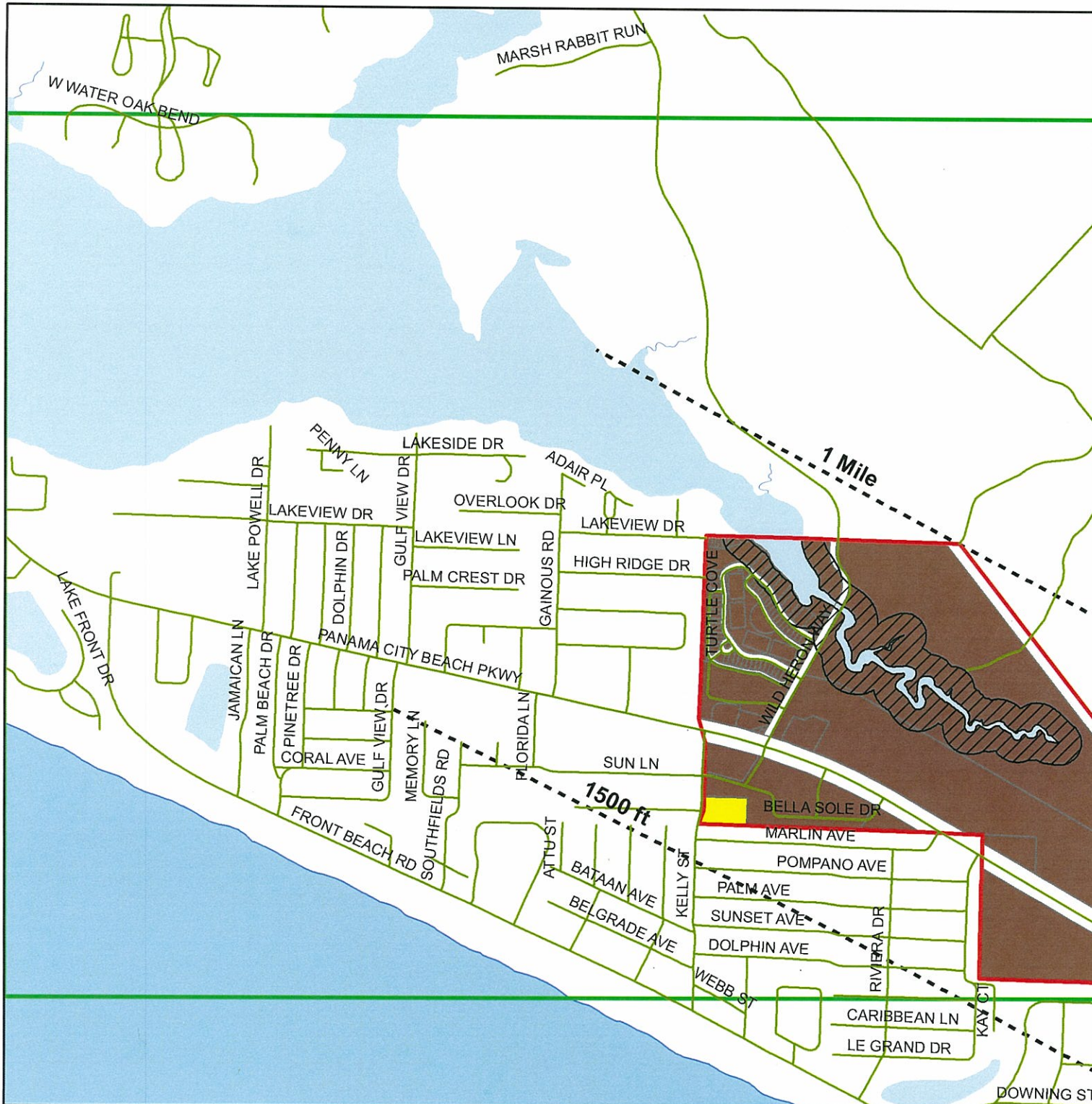
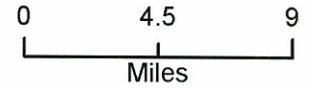


This GIS data is not a legal representation of the features depicted; any assumption of the legal status of this data is hereby disclaimed.

Panama City Beach Future Land Use (2009 - 2020)



August 2009

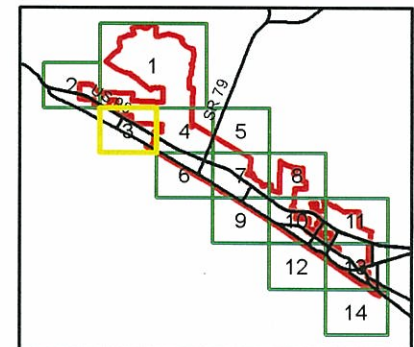
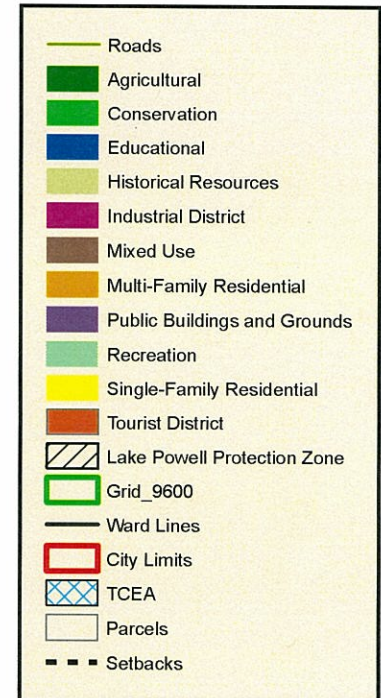
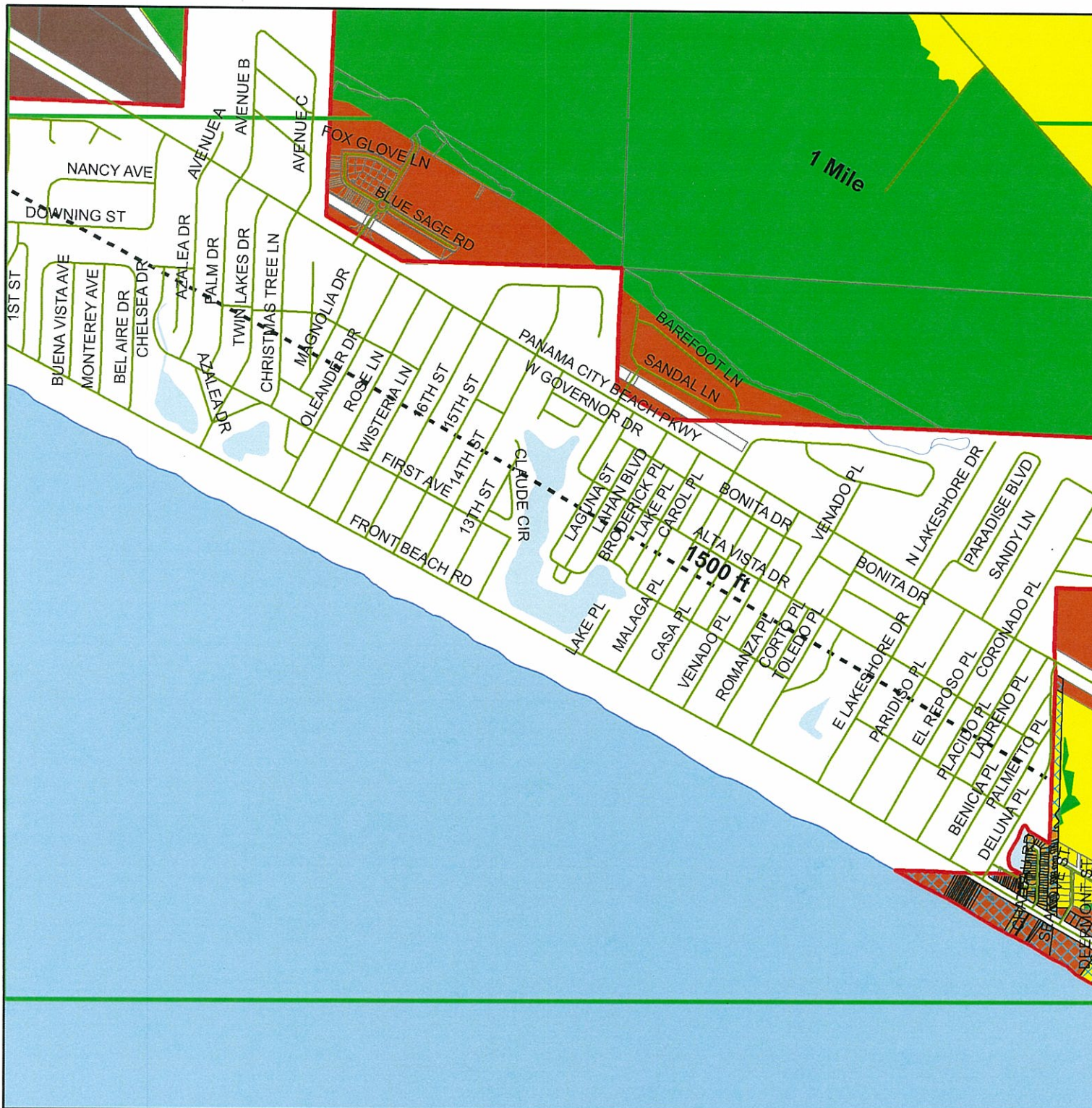
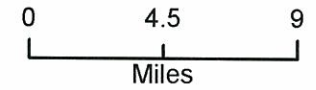


This GIS data is not a legal representation of the features depicted; any assumption of the legal status of this data is hereby disclaimed.

Panama City Beach Future Land Use (2009 - 2020)



August 2009

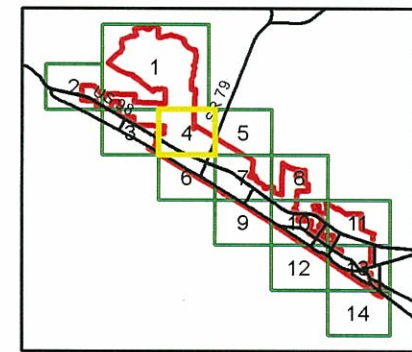
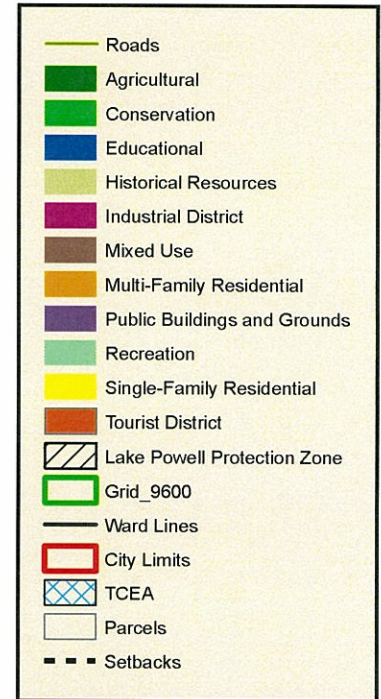
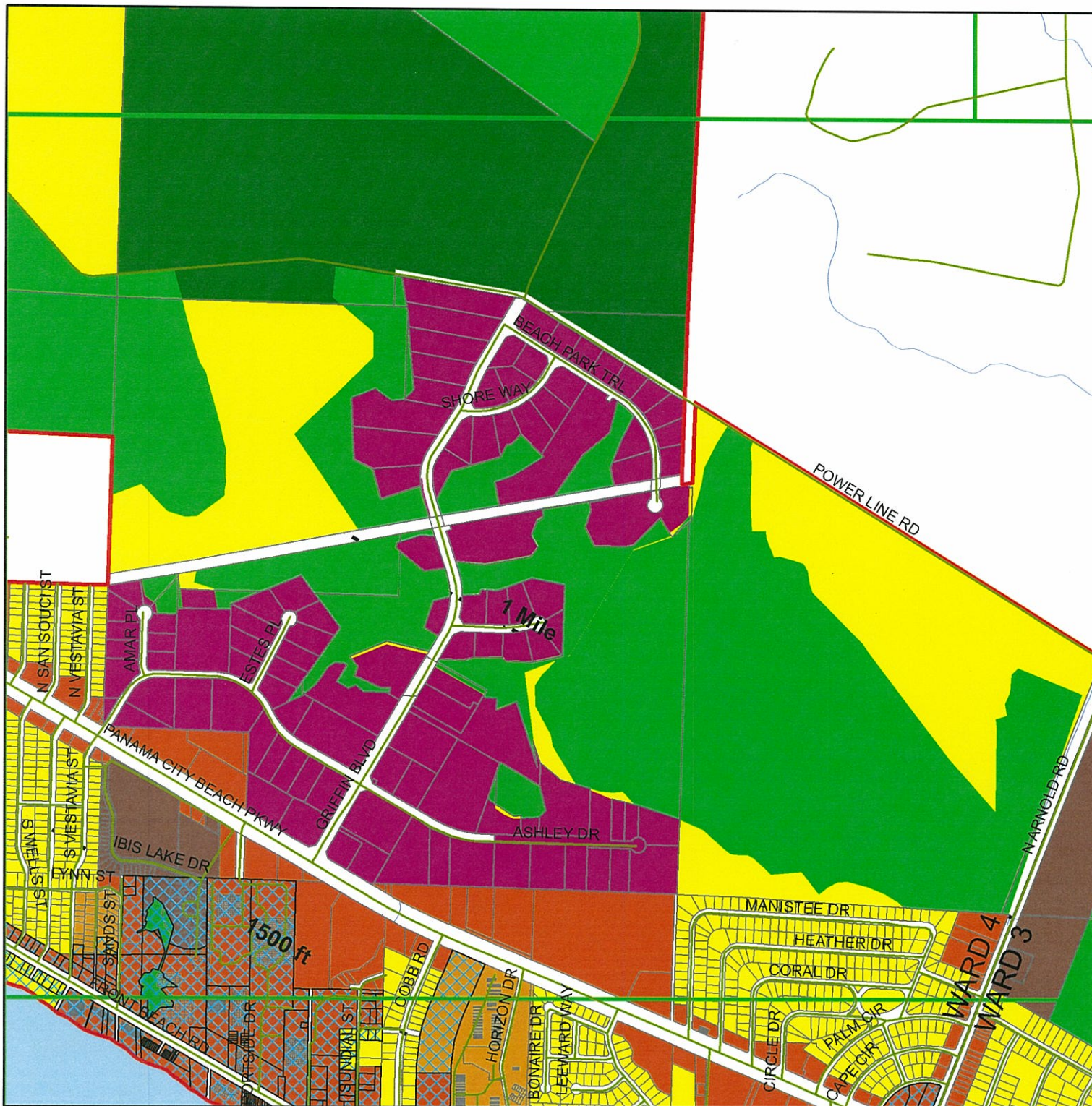
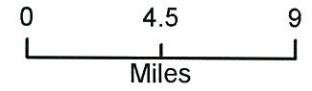


This GIS data is not a legal representation of the features depicted; any assumption of the legal status of this data is hereby disclaimed.

Panama City Beach Future Land Use (2009 - 2020)



August 2009

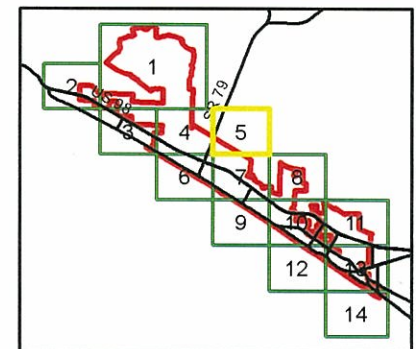
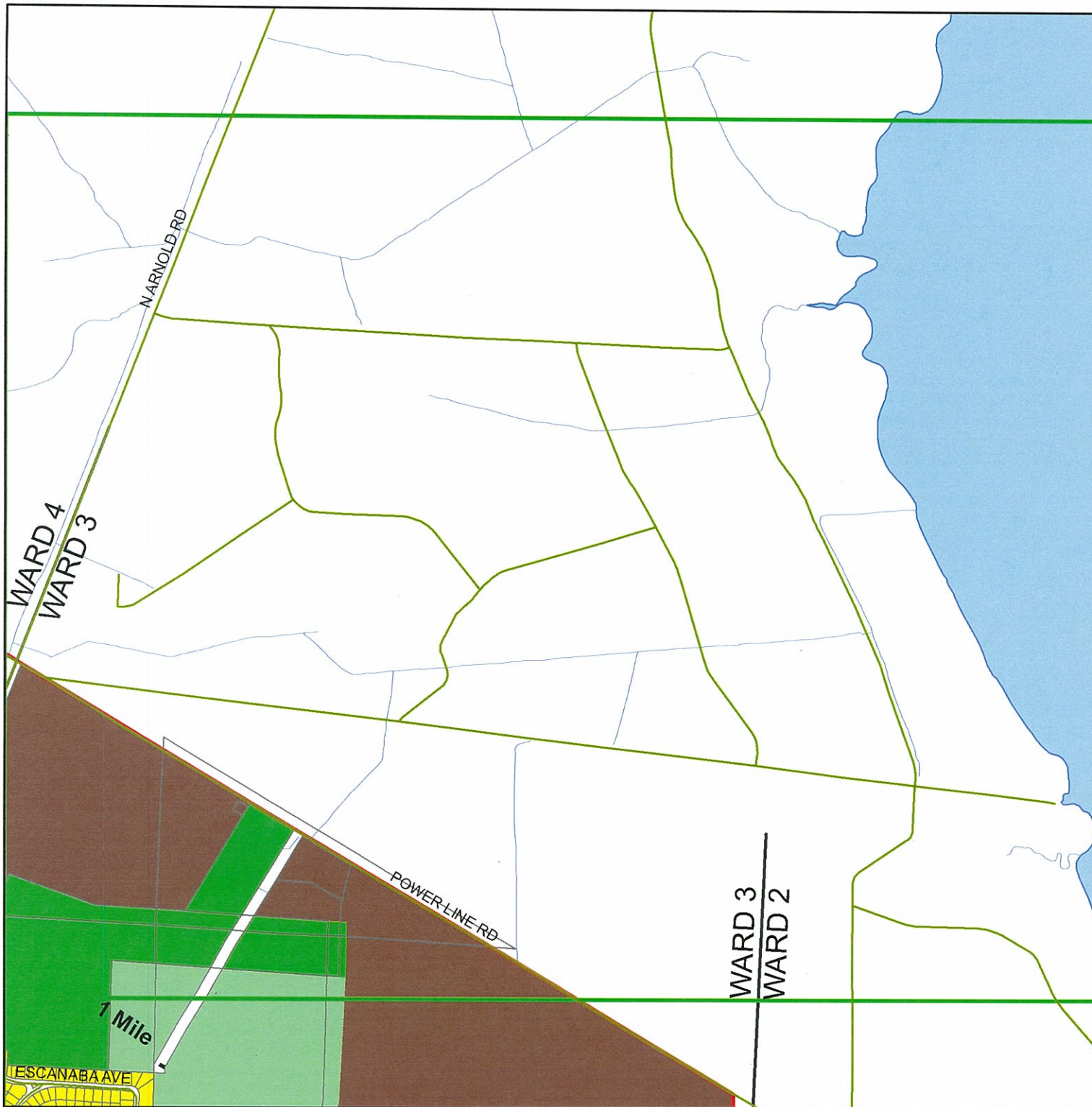
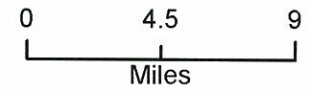


This GIS data is not a legal representation of the features depicted; any assumption of the legal status of this data is hereby disclaimed.

Panama City Beach Future Land Use (2009 - 2020)



August 2009

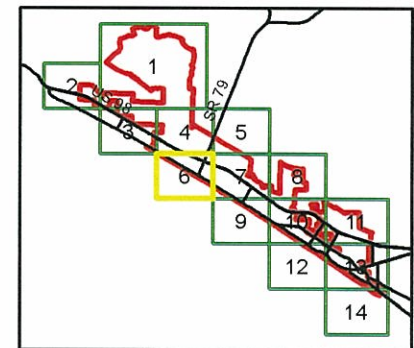
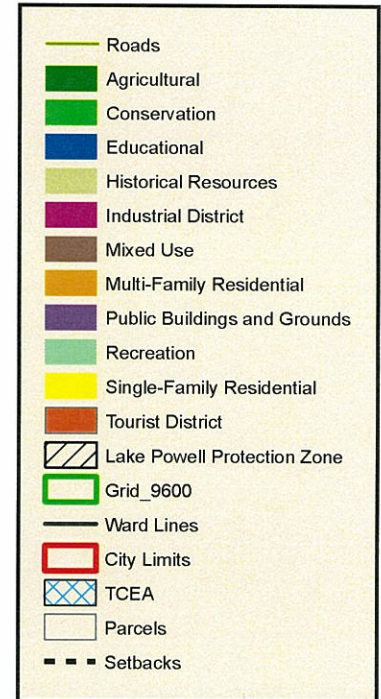
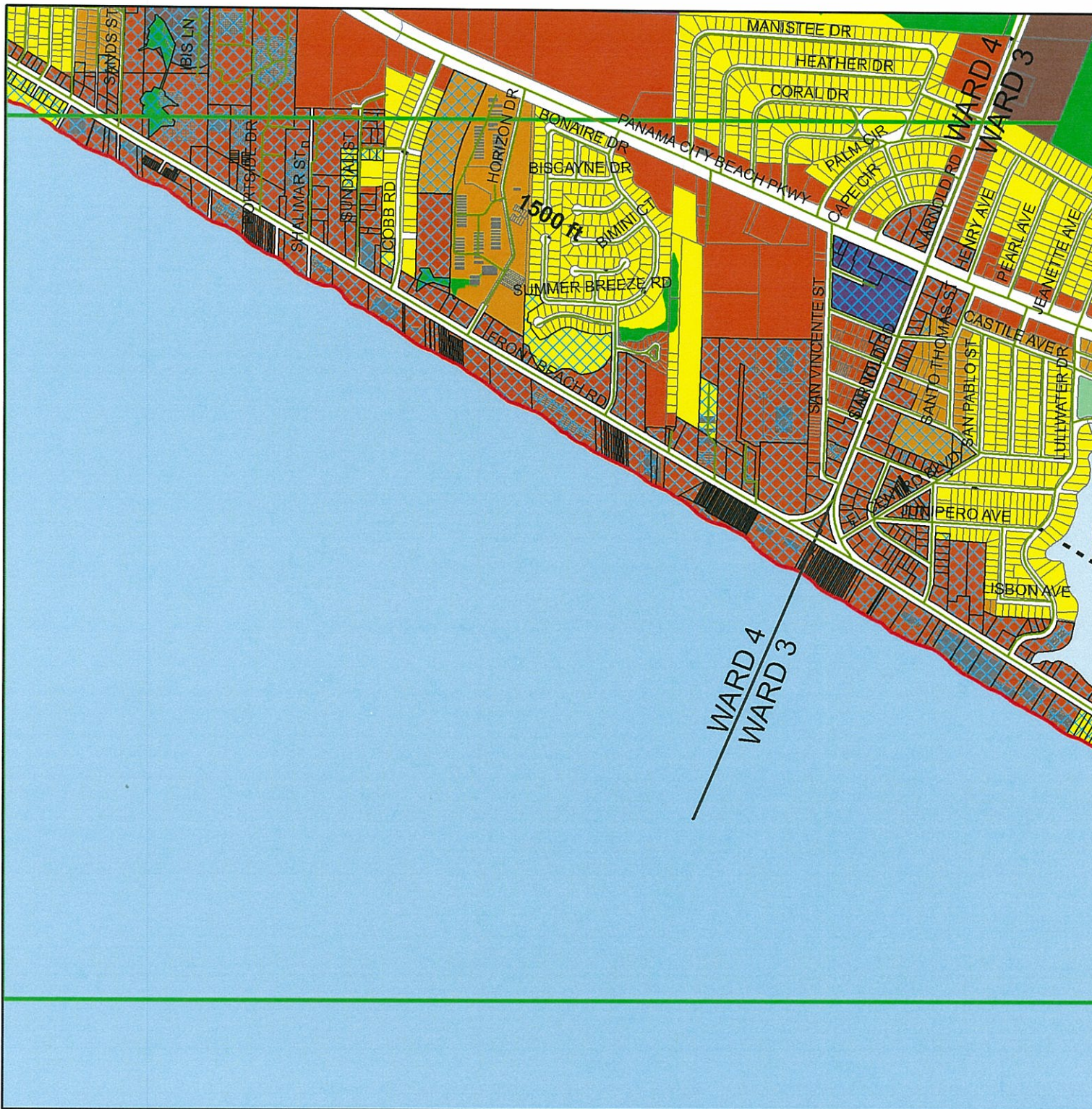
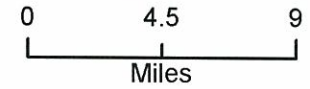


This GIS data is not a legal representation of the features depicted; any assumption of the legal status of this data is hereby disclaimed.

Panama City Beach Future Land Use (2009 - 2020)



August 2009

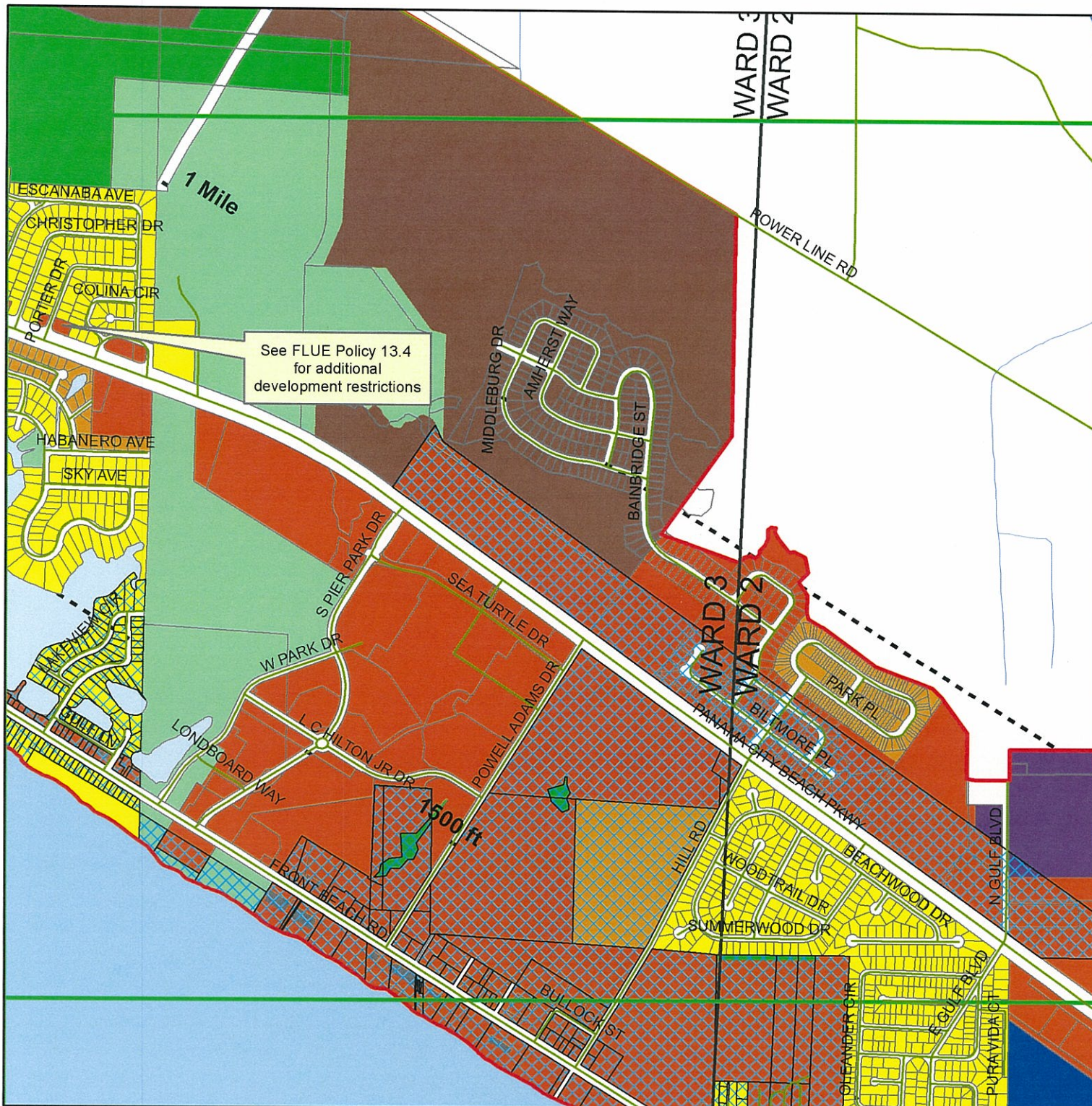
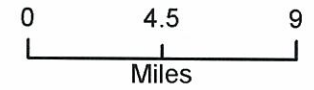


This GIS data is not a legal representation of the features depicted; any assumption of the legal status of this data is hereby disclaimed.

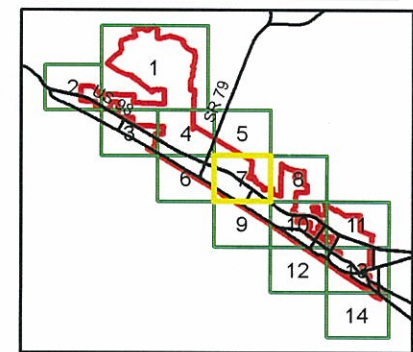
Panama City Beach Future Land Use (2009 - 2020)



August 2009



See FLUE Policy 13.4
for additional
development restrictions

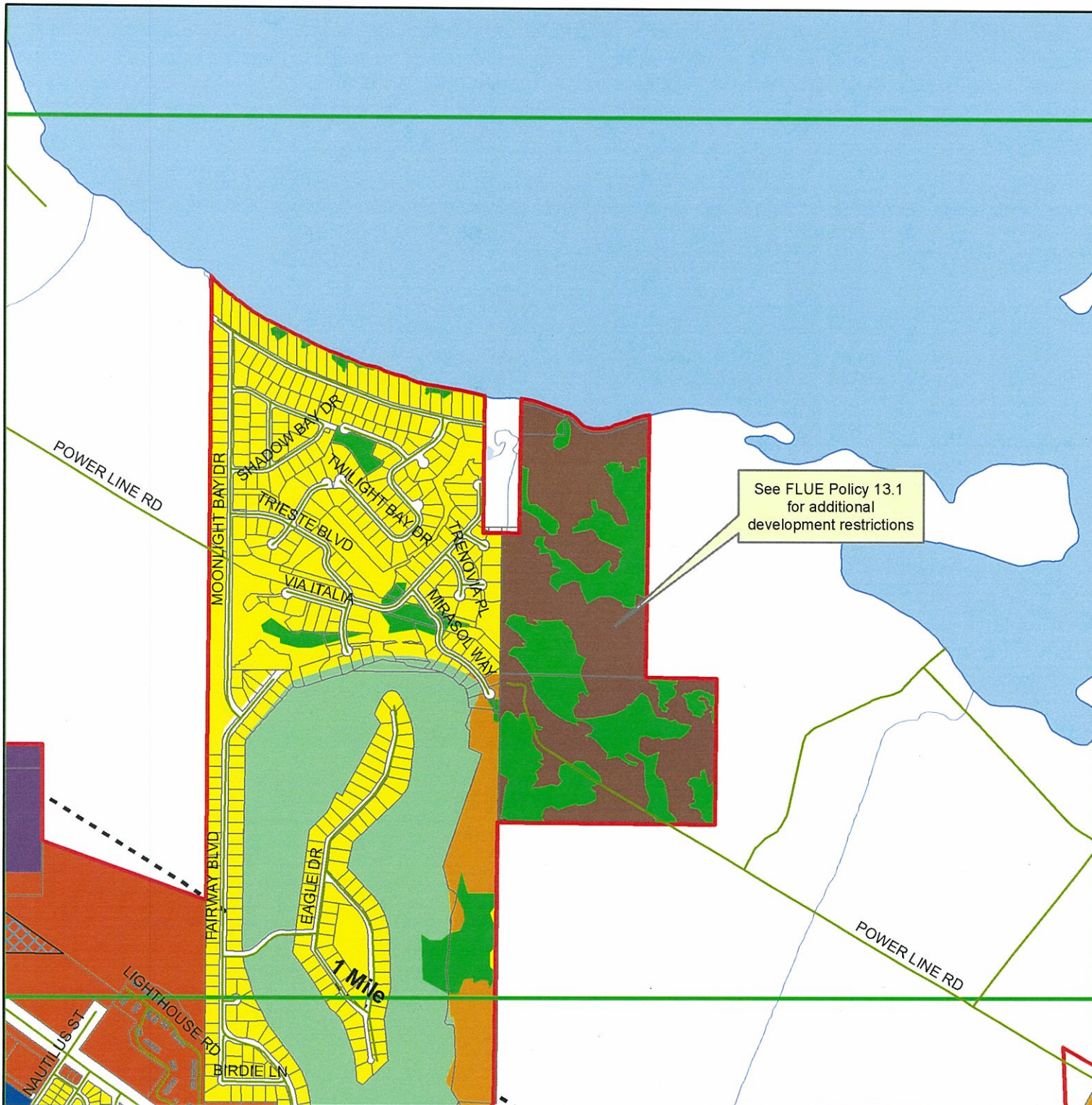
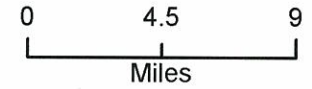


This GIS data is not a legal representation of the features depicted; any assumption of the legal status of this data is hereby disclaimed.

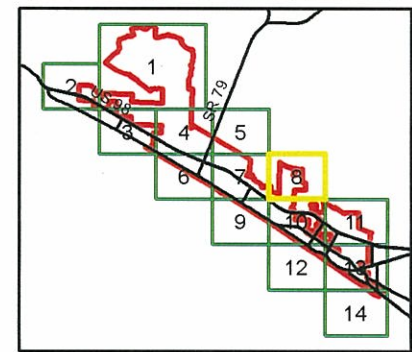
Panama City Beach Future Land Use (2009 - 2020)



August 2009



See FLUE Policy 13.1
for additional
development restrictions

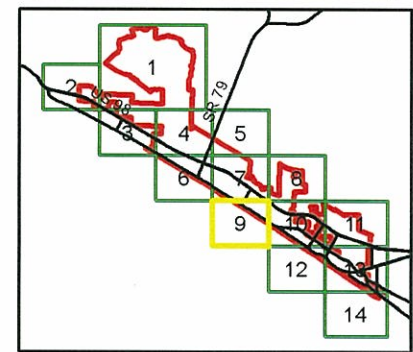
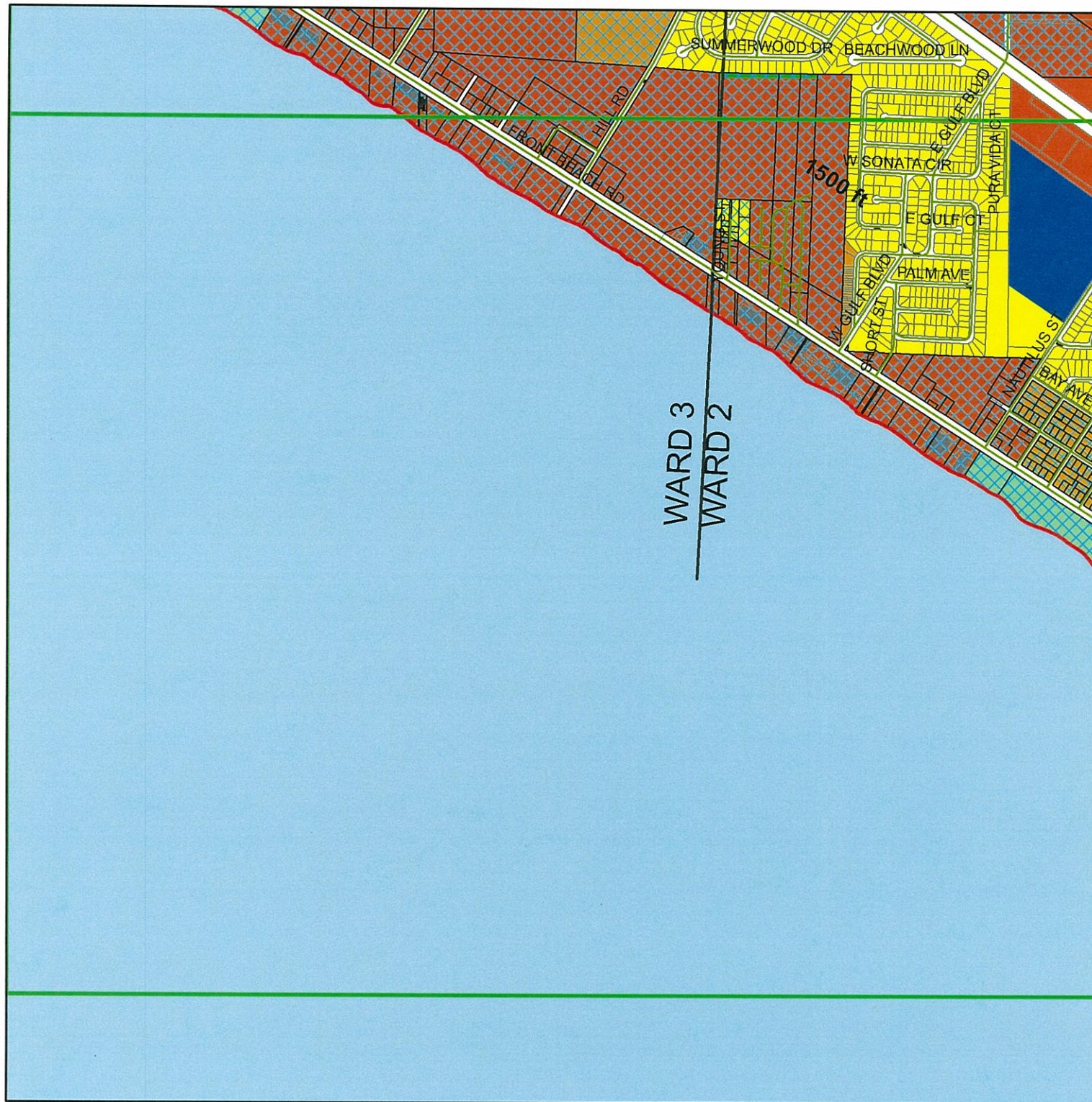
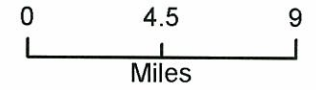


This GIS data is not a legal representation of the features depicted; any assumption of the legal status of this data is hereby disclaimed.

Panama City Beach Future Land Use (2009 - 2020)



August 2009

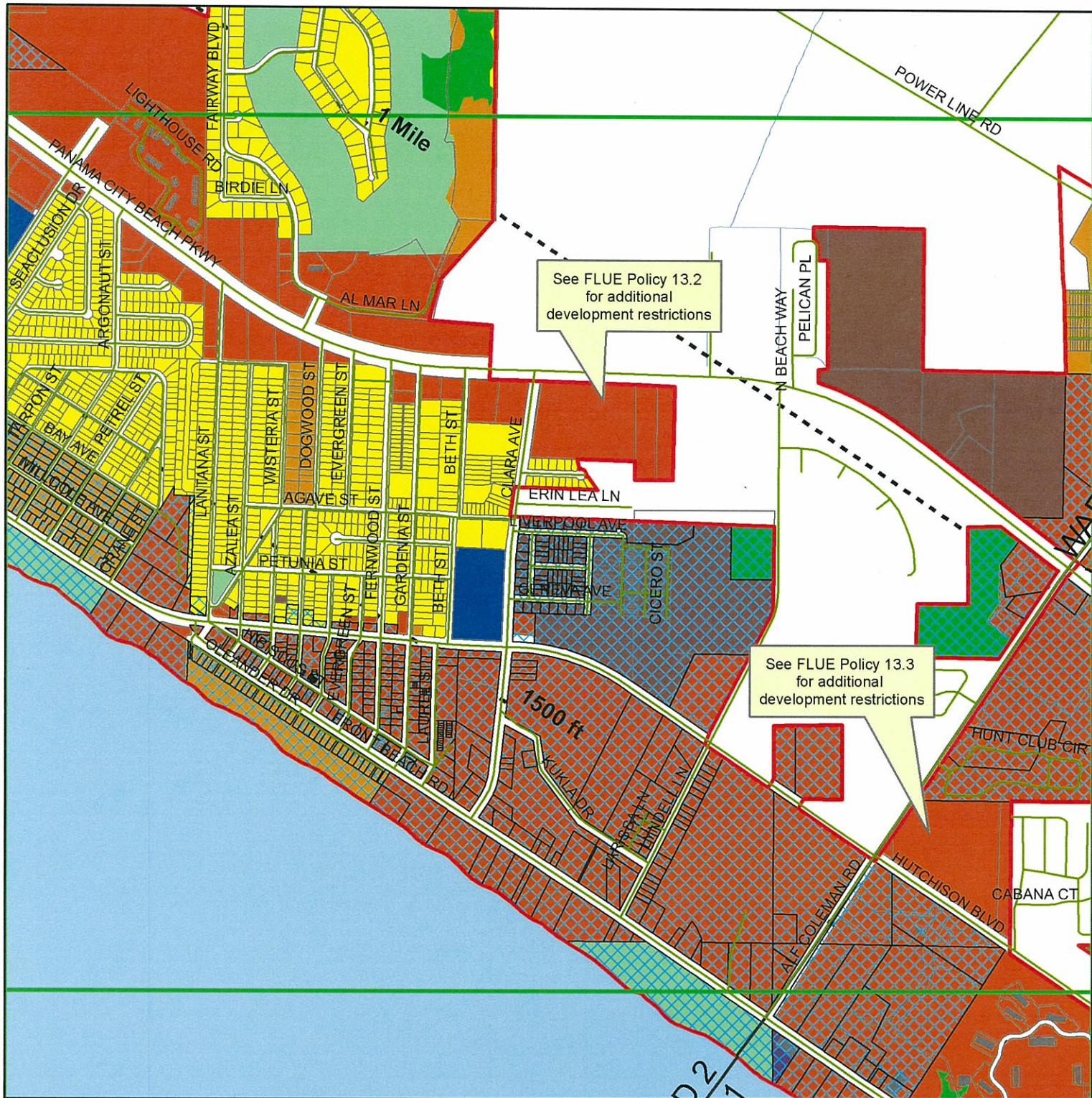
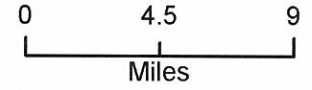


This GIS data is not a legal representation of the features depicted; any assumption of the legal status of this data is hereby disclaimed.

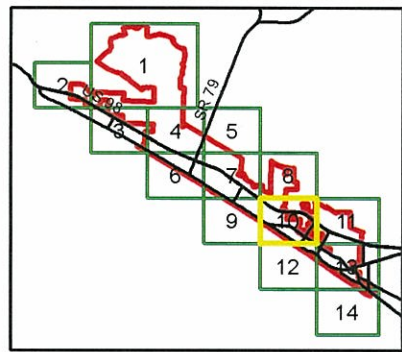
Panama City Beach Future Land Use (2009 - 2020)



August 2009



- Roads
- Agricultural
- Conservation
- Educational
- Historical Resources
- Industrial District
- Mixed Use
- Multi-Family Residential
- Public Buildings and Grounds
- Recreation
- Single-Family Residential
- Tourist District
- Lake Powell Protection Zone
- Grid_9600
- Ward Lines
- City Limits
- TCEA
- Parcels
- Setbacks

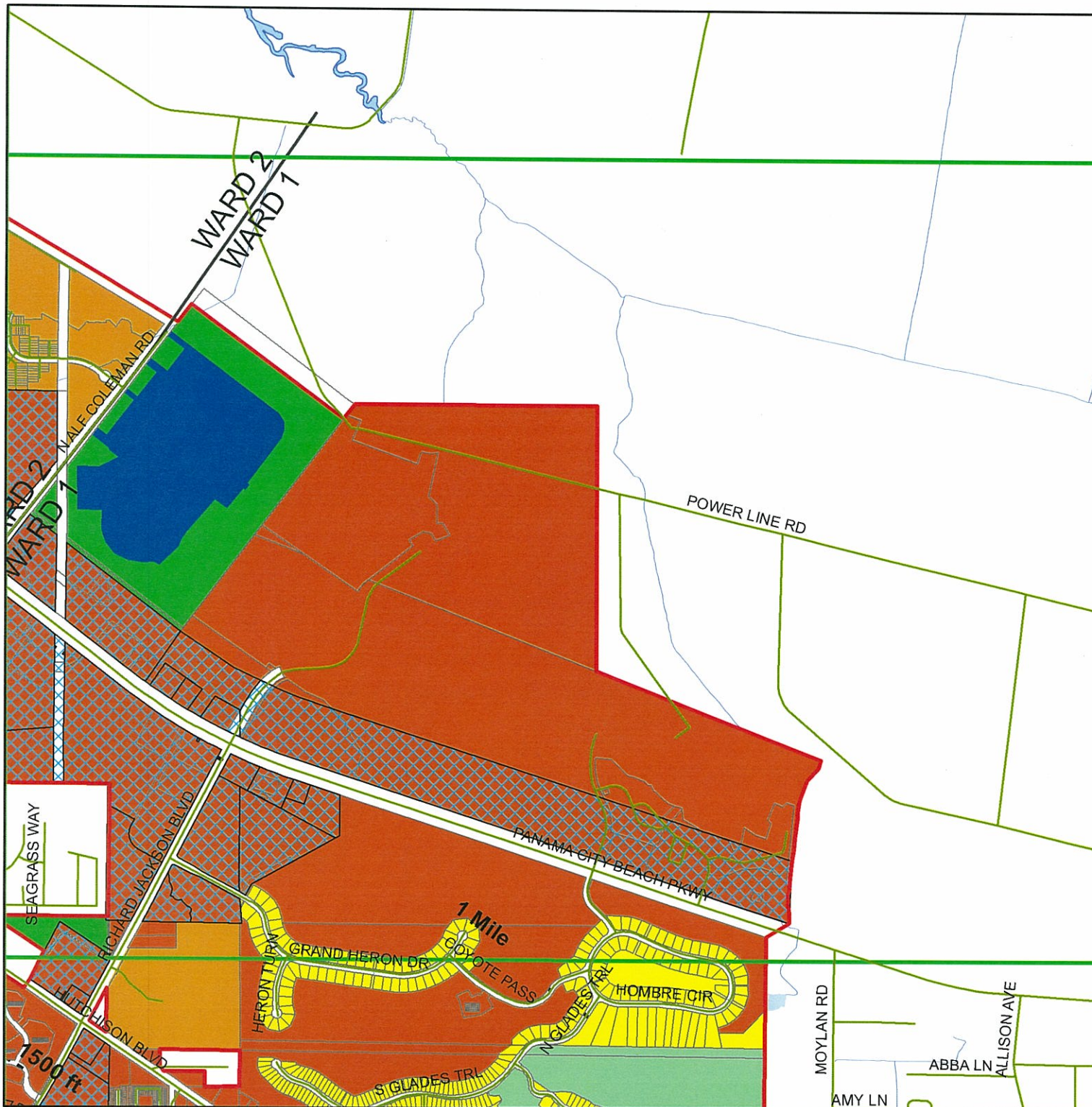
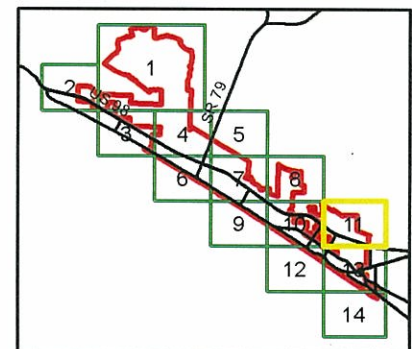
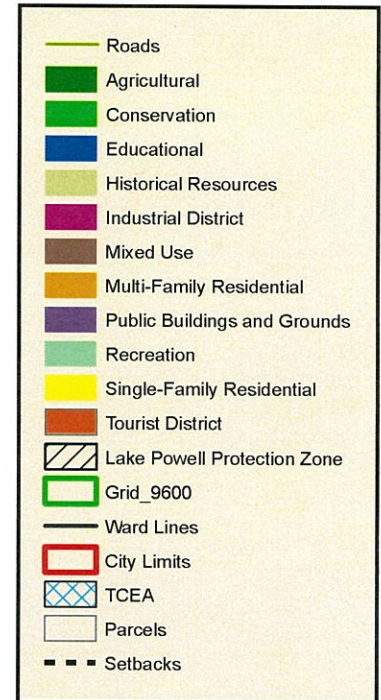
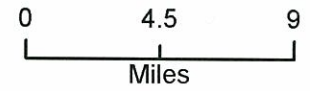


This GIS data is not a legal representation of the features depicted; any assumption of the legal status of this data is hereby disclaimed.

Panama City Beach Future Land Use (2009 - 2020)



August 2009

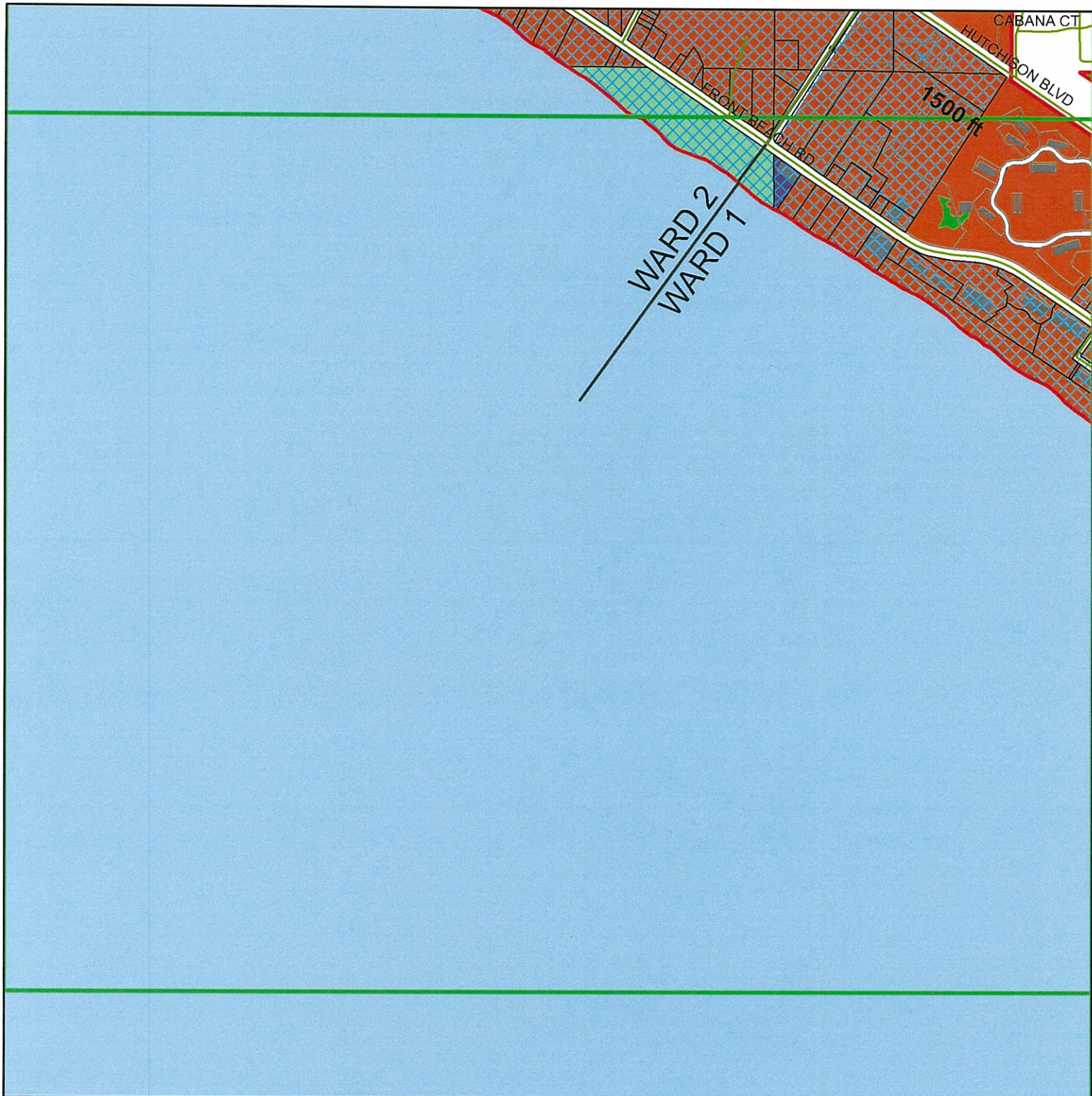
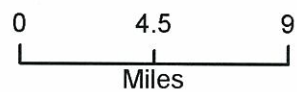


This GIS data is not a legal representation of the features depicted; any assumption of the legal status of this data is hereby disclaimed.

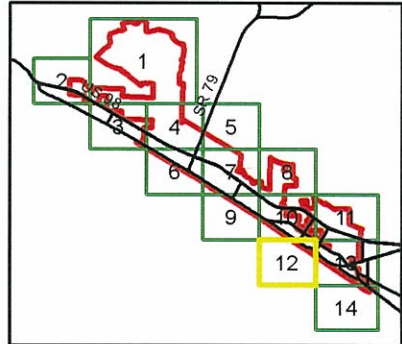
Panama City Beach Future Land Use (2009 - 2020)



August 2009



- Roads
- Agricultural
- Conservation
- Educational
- Historical Resources
- Industrial District
- Mixed Use
- Multi-Family Residential
- Public Buildings and Grounds
- Recreation
- Single-Family Residential
- Tourist District
- Lake Powell Protection Zone
- Grid_9600
- Ward Lines
- City Limits
- TCEA
- Parcels
- Setbacks

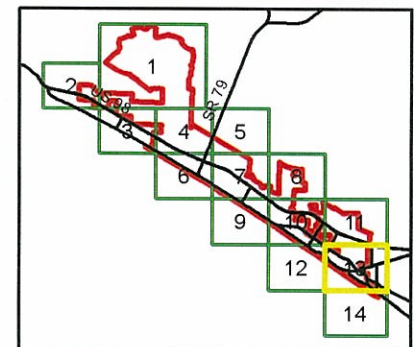
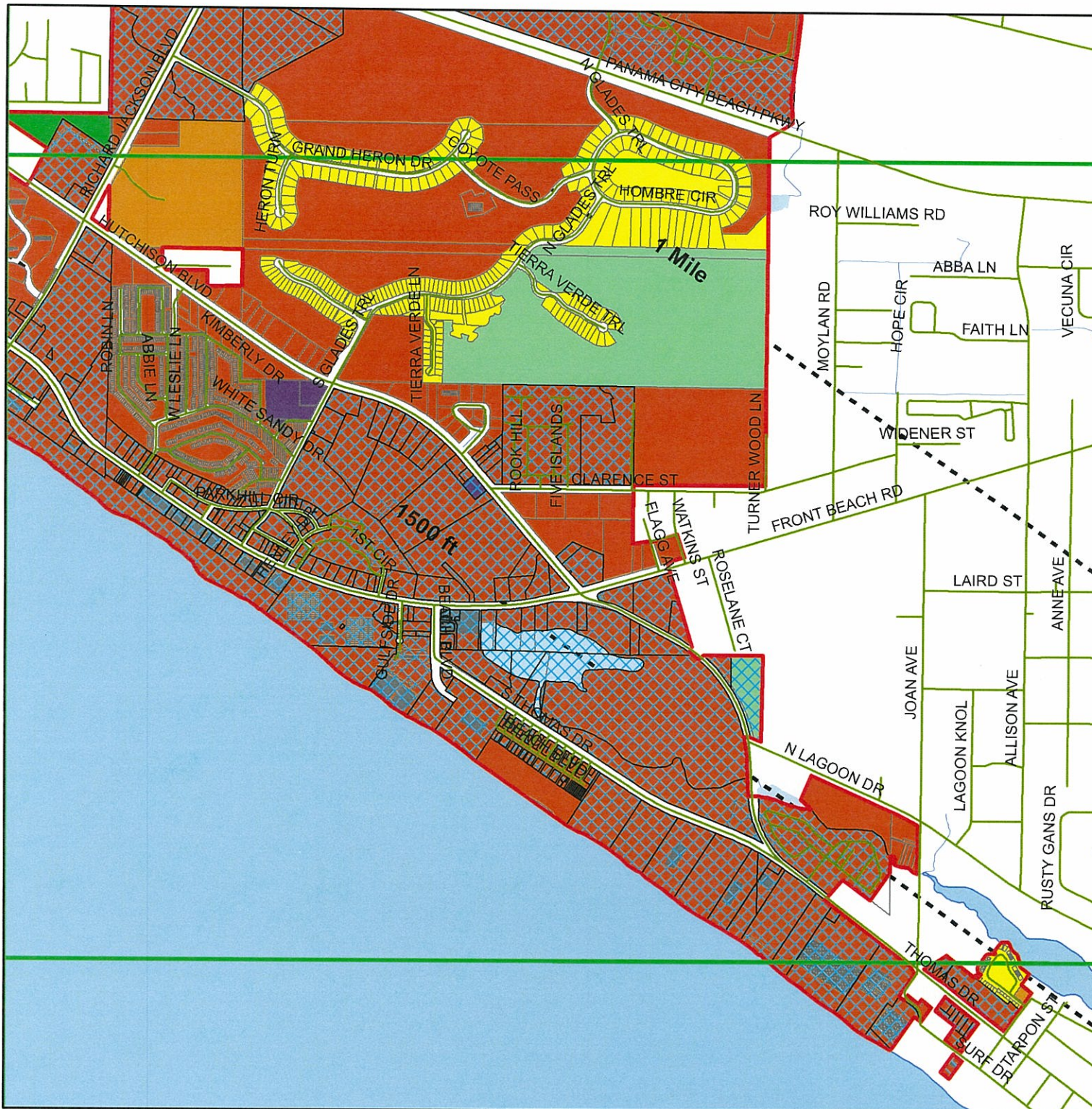
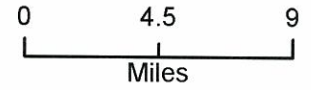


This GIS data is not a legal representation of the features depicted; any assumption of the legal status of this data is hereby disclaimed.

Panama City Beach Future Land Use (2009 - 2020)



August 2009

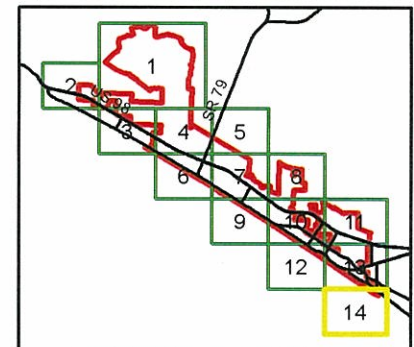
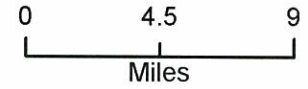


This GIS data is not a legal representation of the features depicted; any assumption of the legal status of this data is hereby disclaimed.

Panama City Beach Future Land Use (2009 - 2020)



August 2009



This GIS data is not a legal representation of the features depicted; any assumption of the legal status of this data is hereby disclaimed.