

PANAMA CITY BEACH ADMINISTRATIVE ORDER 21-05

AN ORDER AUTHORIZING TEMPORARY ROAD CLOSURE OF CITY STREETS.

WHEREAS, the City has been constructing Segment 2 of Philip Griffiths, Sr. Parkway (f/n/a Bay Parkway) (the "Project"); and

WHEREAS, the Project Contractor has requested closure of Segment 1 of Philip Griffiths, Sr. Parkway, and a portion of North Pier Park Drive, in order to tie in that existing Segment 1 with the new Segment 2, an effort that requires the milling and re-grading of Segment 1 to account for differences in the grade elevations between the two segments; and

WHEREAS, section 19-50 of the City's Code of Ordinances authorizes the City Manager to restrict the use of streets in order to prevent conflicts between the use of this roadway by the public and the intensive construction work to be undertaken; and

WHEREAS, the Chief of Police has confirmed that the temporary closure of this road will is necessary or useful to protect the health, safety and welfare of the public, and to reduce the risk of damage to persons and property.

NOW THEREFORE IT IS HEREBY ORDERED that:

1. Philip Griffiths, Sr. Boulevard, from its western terminus at Highway 79, to the intersection of North Pier Park Drive, and North Pier Drive, from its northern terminus to the northernmost entrance driveway of the existing Pier Park Crossings Apartments, will be closed to the public from 6:00 am, Tuesday, April 13, 2021 through midnight, Thursday April 15, 2021, to facilitate the construction activity on these city roadways.
2. The Project Contractor will be responsible for maintenance of traffic, in accordance with the Plan attached as Exhibit A to this Order.


THIS ORDER shall be effective immediately upon execution.

ORDERED this 26th day of March, 2021.

CITY OF PANAMA CITY BEACH

By: 
Al Shortt, Interim City Manager

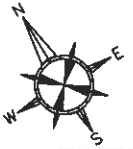
ATTEST:


Lynne Fasone, City Clerk

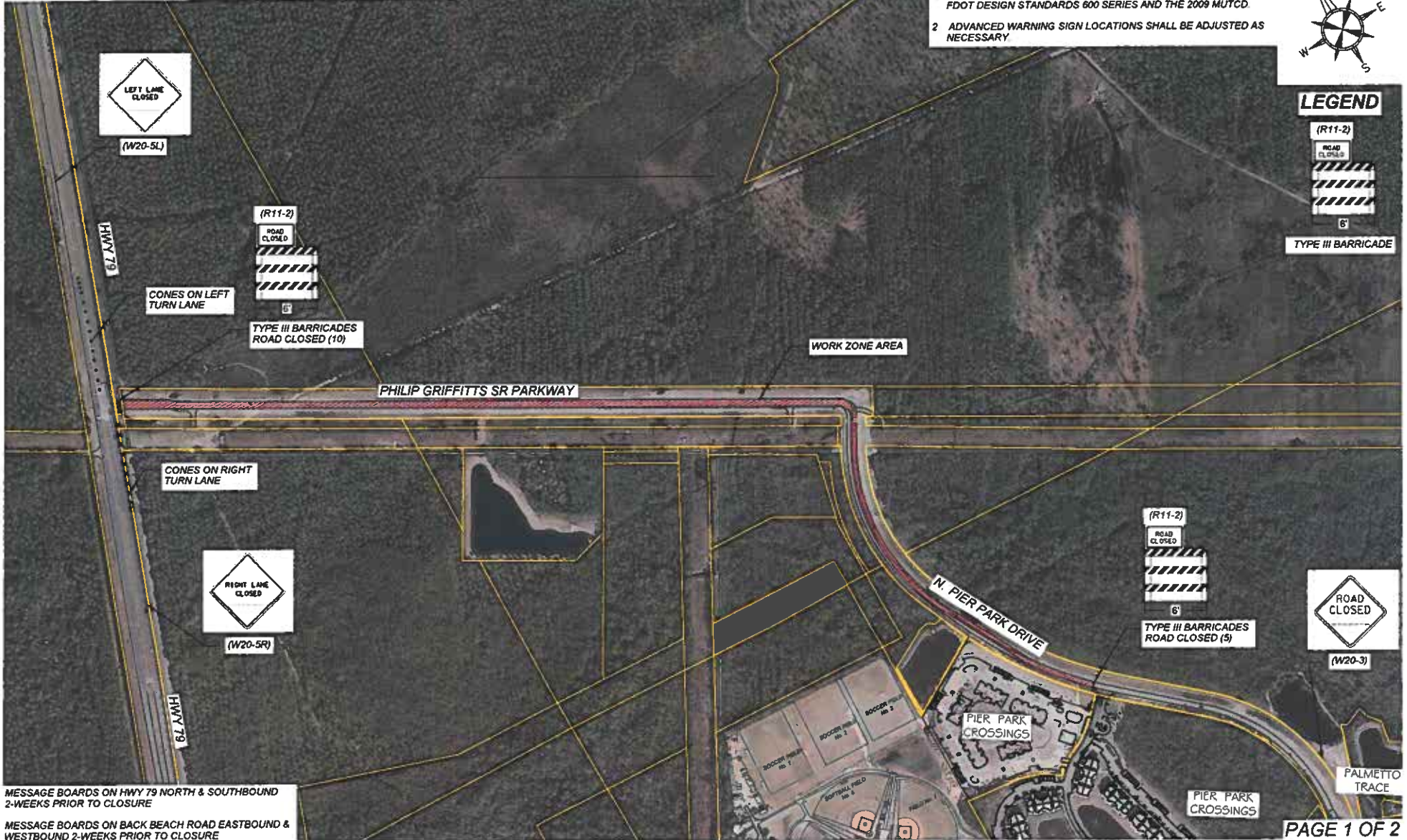
PHILIP GRIFFITS SR PARKWAY MOT

NOTES:

- 1 MAINTENANCE OF TRAFFIC SHALL BE IN ACCORDANCE WITH FDOT DESIGN STANDARDS 600 SERIES AND THE 2009 MUTCD.
- 2 ADVANCED WARNING SIGN LOCATIONS SHALL BE ADJUSTED AS NECESSARY.



LEGEND



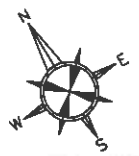
MESSAGE BOARDS ON HWY 79 NORTH & SOUTHBOUND
2-WEEKS PRIOR TO CLOSURE

MESSAGE BOARDS ON BACK BEACH ROAD EASTBOUND &
WESTBOUND 2-WEEKS PRIOR TO CLOSURE

PHILIP GRIFFITS SR PARKWAY MOT





NOTES:

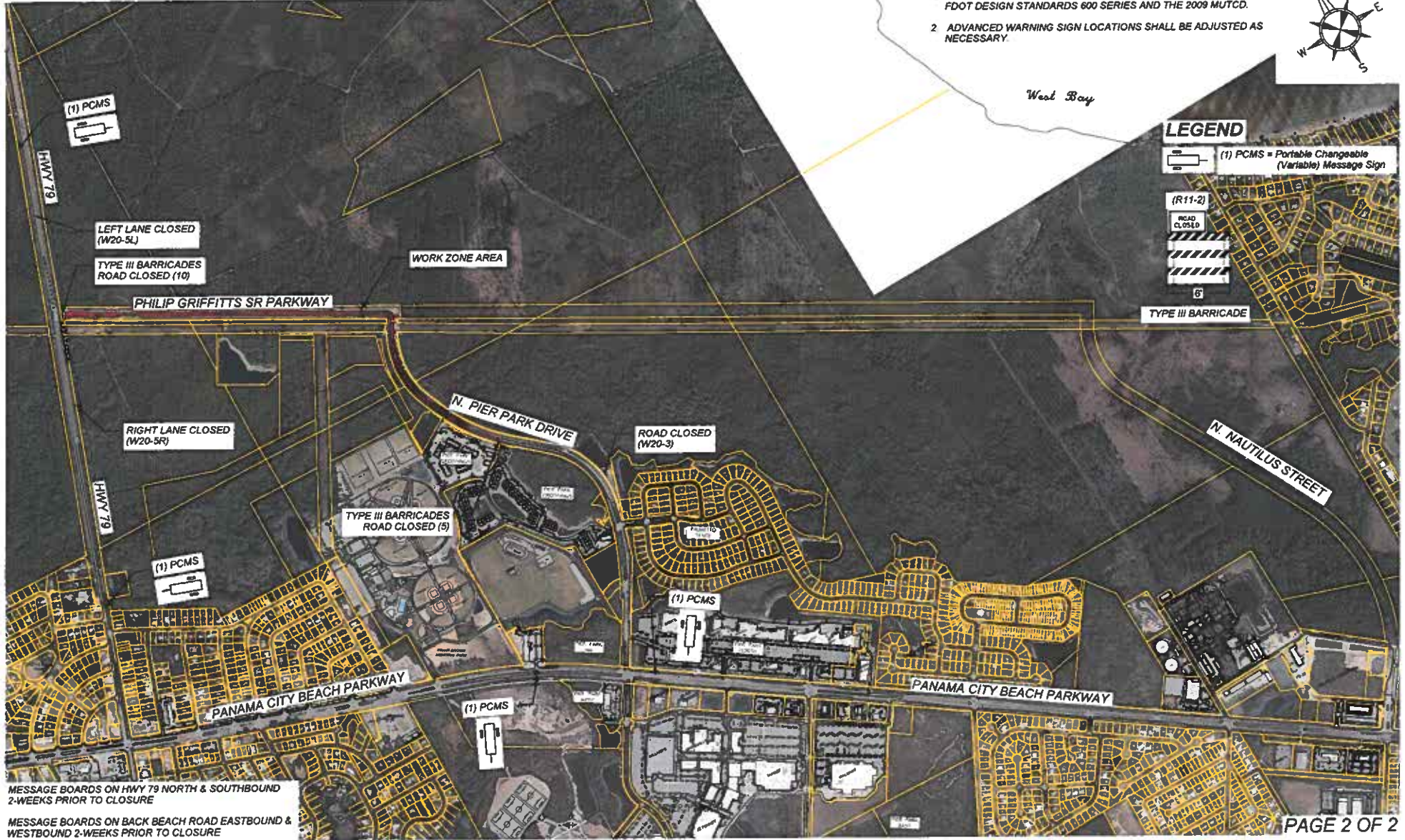
1. MAINTENANCE OF TRAFFIC SHALL BE IN ACCORDANCE WITH FDOT DESIGN STANDARDS 600 SERIES AND THE 2009 MUTCD.
2. ADVANCED WARNING SIGN LOCATIONS SHALL BE ADJUSTED AS NECESSARY.



West Bay

LEGEND

-  (1) PCMS = Portable Changeable (Variable) Message Sign
-  (R11-2)
-  ROAD CLOSED
-  TYPE III BARRICADE



MESSAGE BOARDS ON HWY 79 NORTH & SOUTHBOUND
2-WEEKS PRIOR TO CLOSURE

MESSAGE BOARDS ON BACK BEACH ROAD EASTBOUND &
WESTBOUND 2-WEEKS PRIOR TO CLOSURE