

**RESOLUTION NO. 22-139**

**A RESOLUTION OF THE CITY OF PANAMA CITY BEACH, FLORIDA, RELATING TO THE ACCEPTANCE AND ACQUISITION OF LANDS FROM THE STATE OF FLORIDA DEPARTMENT OF TRANSPORTATION FOR THE SR 30 (US 98/PCB PARKWAY) IMPROVEMENT PROJECT.**

**WHEREAS**, the State of Florida Department of Transportation (FDOT) proposes to construct or improve State Road 30 (US 98/PCB Pkwy), Financial Project 2178383, in Bay County, Florida (the "Project"); and

**WHEREAS**, it is necessary that certain privately-owned lands be acquired by FDOT for the City in furtherance of that Project; and

**WHEREAS**, said property will remain on the City roadway system; and

**WHEREAS**, FDOT has made application to the City to accept the deeds, in favor of the City, conveying said rights, title and interest to the City for said lands required for transportation purposes (Parcels 1100 & 1102, Project 2178383), and for the City to cooperate with FDOT in any condemnation of any property which may be required, and said request having been duly considered.

**NOW THEREFORE BE IT RESOLVED** by the City Council of the City of Panama City Beach, Florida, that the City shall accept deeds conveying property to the City for transportation purposes, and the City shall cooperate with FDOT in the condemnation of any property which may be required.

**AND BE IT FURTHER RESOLVED** that a certified copy of this Resolution be forwarded forthwith to the State of Florida Department of Transportation at 1074 Highway 90, Chipley, Florida 32423.

**THIS RESOLUTION** shall be effective immediately upon passage.

**PASSED** in regular session this 28<sup>th</sup> day of April, 2022.

**CITY OF PANAMA CITY BEACH**

By: Mark Sheldon  
Mark Sheldon, Mayor

**ATTEST:**

Lynne Fasone  
Lynne Fasone, City Clerk

**STATE OF FLORIDA  
CITY OF PANAMA CITY BEACH**

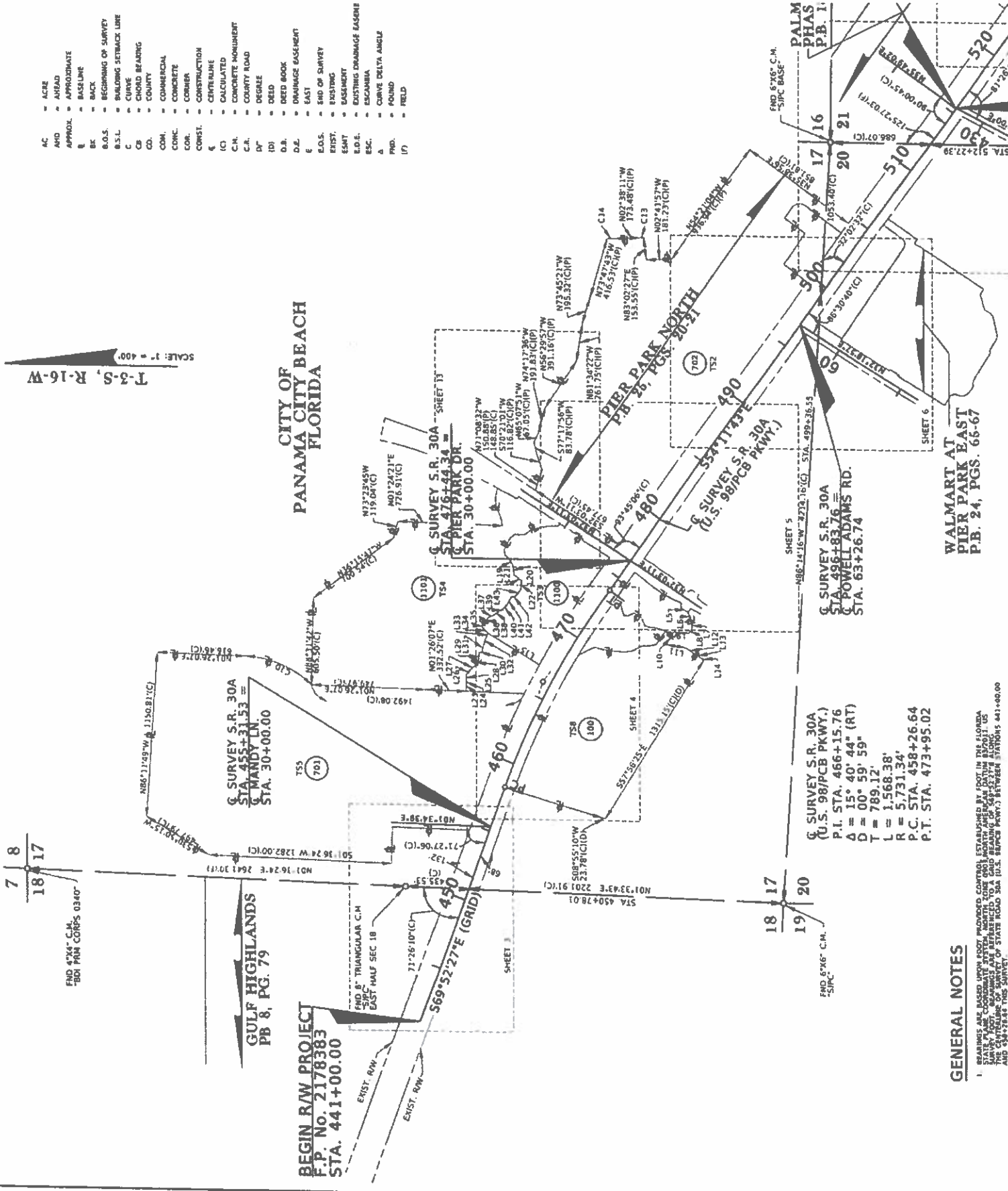
**I HEREBY CERTIFY** that the foregoing is a true copy of a Resolution adopted by the City Council of Panama City Beach, Florida, at a meeting held on the 20<sup>th</sup> day of April, 2022.

  
\_\_\_\_\_  
Lynne Fasone, City Clerk

- AC = ACRE
- AND = AHEAD
- APPROX. = APPROXIMATE
- B = BASELINE
- BK = BACK
- B.O.S. = BEGINNING OF SURVEY
- B.S.L. = BUILDING SETBACK LINE
- C = CURVE
- C.B. = CHORD BEARING
- CO. = COUNTY
- COM. = COMMERCIAL
- CONC. = CONCRETE
- COR. = CORNER
- CONSTR. = CONSTRUCTION
- CONT. = CENTERLINE
- IC. = CALCULATED
- C.M. = CONCRETE MONUMENT
- C.R. = COUNTY ROAD
- D' = DEGREE
- DEED = DEED
- D.B. = DRED BOOK
- D.E. = DRAINAGE EASEMENT
- E = EAST
- E.O.S. = END OF SURVEY
- EXIST. = EXISTING
- ESMT = EASEMENT
- E.D.E. = EXISTING DRAINAGE EASEMENT
- ESC. = ESCAMBIA
- Δ = CHAVE DELTA ANGLE
- FOUND = FOUND
- FIELD = FIELD

T-3-S, R-16-W  
SCALE: 1" = 400'

CITY OF PANAMA CITY BEACH  
FLORIDA



GENERAL NOTES

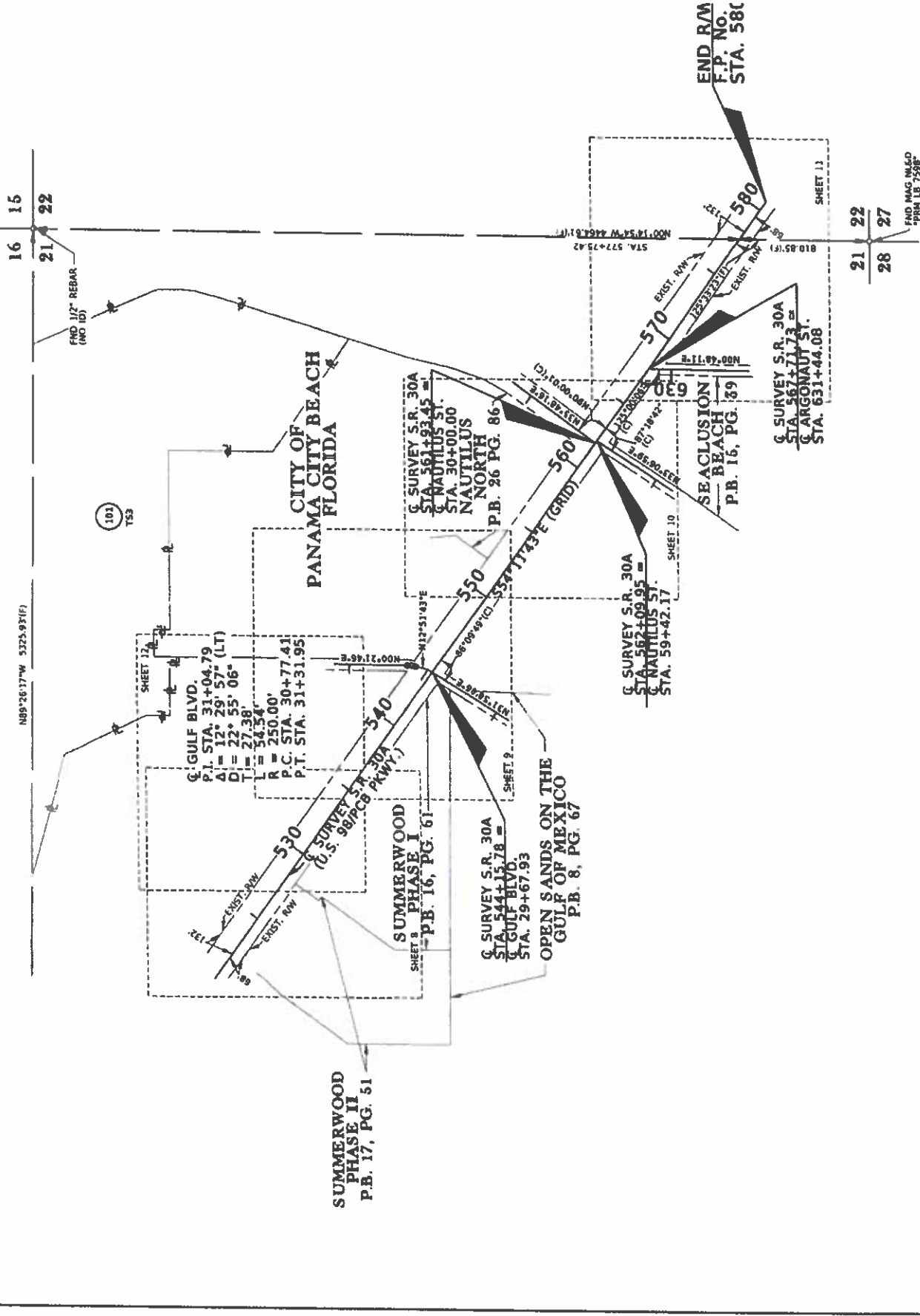
1. STAKES AND CORNER MONUMENTS CONTROL SET ALONG THE DIST IN THE EASEMENT ARE TO BE SET BY THE SURVEYOR. MONUMENTS SHALL BE SET IN THE EASEMENT AND REFERENCED TO A GRID BEARING OF 549°52'17" ALONG THE CENTERLINE OF STATE ROAD 30A (U.S. 98/PCB PKWY.) BETWEEN STATIONS 441+00.00 AND 554+26.74 THIS SURVEY.

G SURVEY S.R. 30A  
(U.S. 98/PCB PKWY.)  
P.I. STA. 466+15.76  
Δ = 15° 40' 44" (RT)  
D = 00' 59' 59"  
T = 789.12'  
L = 1,568.38'  
R = 5,731.34'  
P.C. STA. 458+26.64  
P.T. STA. 473+95.02

G SURVEY S.R. 30A  
STA. 496+83.76  
G POWELL ADAMS RD.  
STA. 63+26.74

WALMART AT  
PIER PARK EAST  
P.B. 24, PGS. 65-67

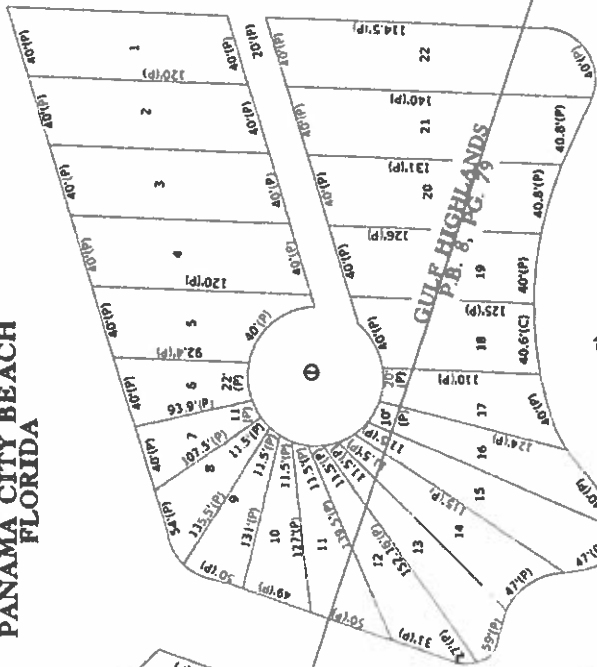
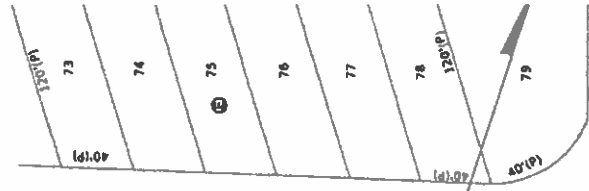
PALM PHAS  
P.B. 1  
STA. 512+27.38  
STA. 520+81.26



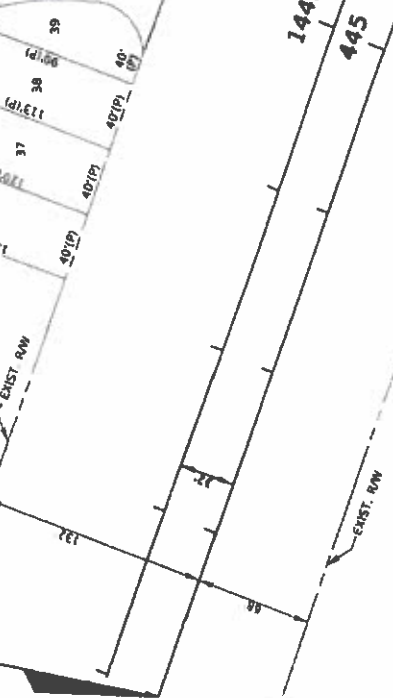
**CITY OF PANAMA CITY BEACH FLORIDA**

PNO 4744 C.M.  
-BDX FROM COMPS 0341

**T-3-S, R-16-W**  
SCALE: 1" = 50'



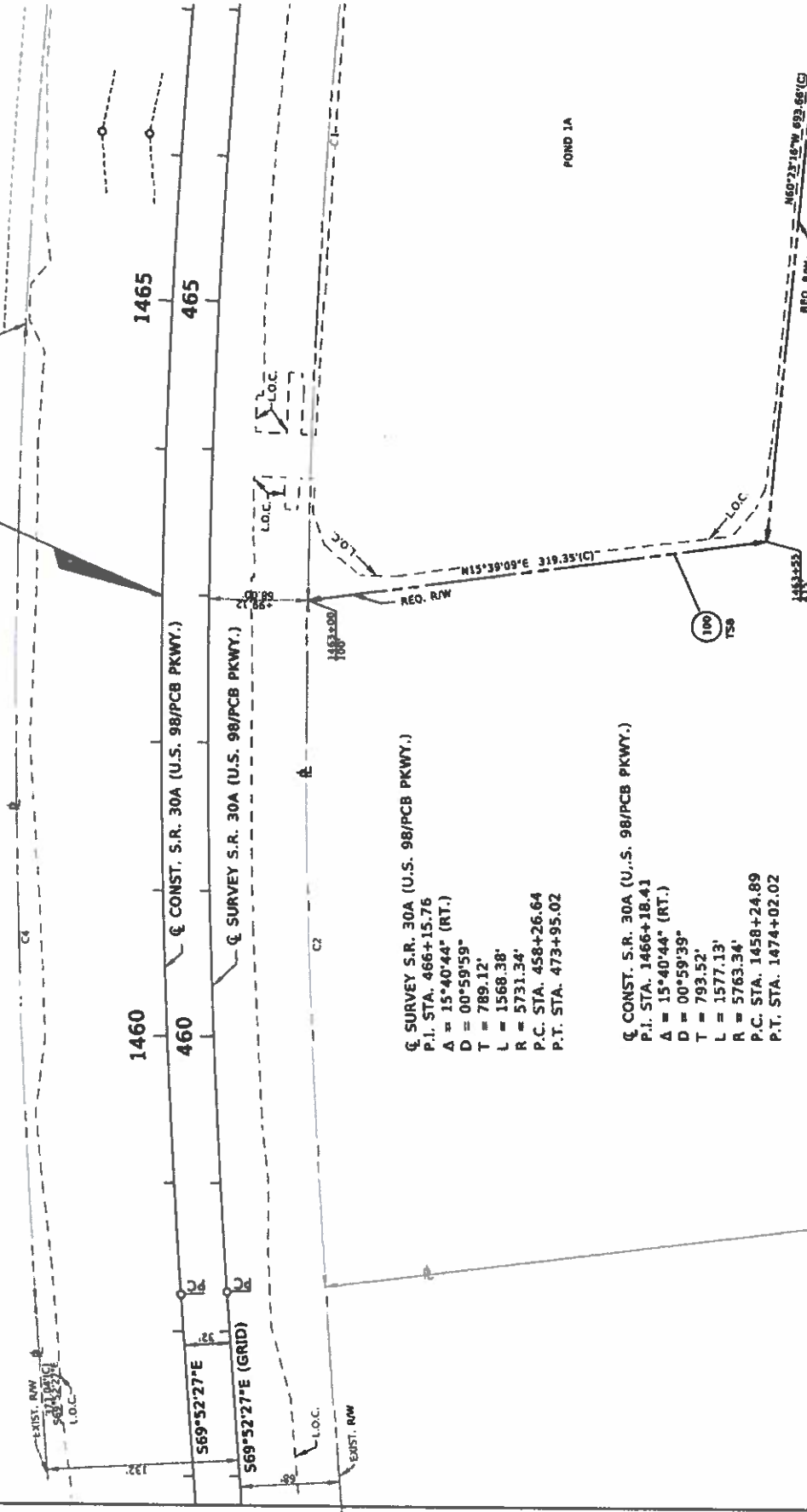
**BEGIN RAW PROJECT**  
P.P. NO. 2178383  
STA. 441+00.00 (Q. SURVEY) =  
STA. 1441+00.00 (Q. CONST. 32' LT.)



**CITY OF  
PANAMA CITY BEACH  
FLORIDA**

SEE SHEET 1 FOR PARENT TRACT  
PROPERTY OF  
PARCEL 701  
O.R. 2044, PG. 34  
PARCEL 3

BEGIN ROW ACQUISITION (RT.)  
± CONST. STA. 1463+00.00



1460

460

1465

465

± CONST. S.R. 30A (U.S. 98/PCB PKWY.)

± SURVEY S.R. 30A (U.S. 98/PCB PKWY.)

± SURVEY S.R. 30A (U.S. 98/PCB PKWY.)

P.I. STA. 466+15.76  
A = 15°40'44" (RT.)  
D = 00°59'59"  
T = 789.12'  
L = 1568.38'  
R = 5731.34'  
P.C. STA. 458+26.64  
P.T. STA. 473+95.02

± CONST. S.R. 30A (U.S. 98/PCB PKWY.)

P.I. STA. 1466+18.41  
A = 15°40'44" (RT.)  
D = 00°59'39"  
T = 793.52'  
L = 1577.13'  
R = 5763.34'  
P.C. STA. 1458+24.89  
P.T. STA. 1474+02.02

POND 1A

100  
TSB

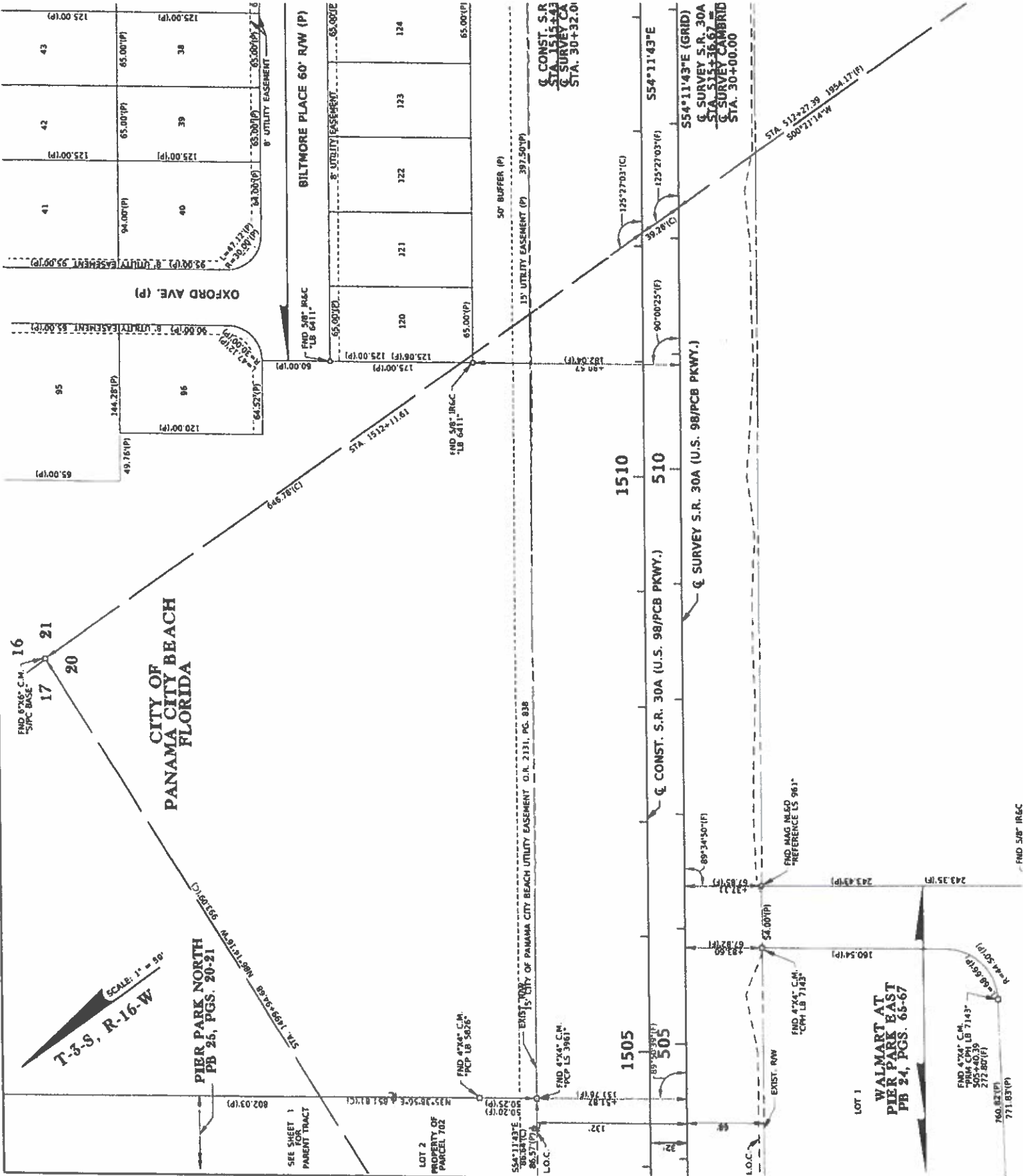
REQ. ROW ± 160°23'18"W 692.66'(C)

± 516°25'10"W 636.73'(C)  
636.86'(D)









**CITY OF PANAMA CITY BEACH  
FLORIDA**

**T-3-S, R-16-W**  
SCALE: 1" = 50'

**PIER PARK NORTH  
PB 25, PGS. 20-21**

**WALMART AT  
PIER PARK EAST  
PB 24, PGS. 66-67**

CONST. S.R.  
STA. 1511+43  
SURVEY CA  
STA. 30+32.01

CONST. S.R. 30A  
SURVEY S.R. 30A  
STA. 511+16.67  
SURVEY CAMBRID  
STA. 30+00.00

EXIST. 15' CITY OF PANAMA CITY BEACH UTILITY EASEMENT O.R. 2131, PG. 838

SEE SHEET 1  
FOR  
PARENT TRACT

LOT 2  
PROPERTY OF  
PARCEL 102

LOT 1

711.83(FP)  
771.83(FP)

END 5/8" IR&C

END MAG NEEDED  
REFERENCE LS 961"

FND 4"X4" C.M.  
PCP LB 5026"

FND 4"X4" C.M.  
PCP LS 3961"

FND 4"X4" C.M.  
CPH LB 7143"

FND 4"X4" C.M.  
PRM CPH LB 7143"  
277.88(FP)

1510

510

1505

505

CONST. S.R. 30A (U.S. 98/PCB PKWY.)

OXFORD AVE. (P)

BILTMORE PLACE 60' R/W (P)

50' BUFFER (P)

15' UTILITY EASEMENT (P) 397.50(FP)

S54°11'43"E (GRID)

SURVEY S.R. 30A  
STA. 511+16.67  
SURVEY CAMBRID  
STA. 30+00.00

STA. 511+27.39 196A.17(FP)  
S00°27'14"W

STA. 1512+11.81

S54°11'43"E

S54°11'43"E (GRID)

SURVEY S.R. 30A  
STA. 511+16.67  
SURVEY CAMBRID  
STA. 30+00.00

STA. 511+27.39 196A.17(FP)  
S00°27'14"W

90°00'25"(F)

125°27'03"(F)

125°27'03"(C)

99.87(FP)

182.64(FP)

4.50 57

69°34'50"(F)

67.83(FP)

54.00(FP)

243.35(FP)

160.82(FP)

771.83(FP)

160.82(FP)

771.83(FP)

125°27'03"(C)

99.87(FP)

182.64(FP)

4.50 57

69°34'50"(F)

67.83(FP)

54.00(FP)

243.35(FP)

160.82(FP)

771.83(FP)

160.82(FP)

771.83(FP)

160.82(FP)

771.83(FP)

160.82(FP)

125°27'03"(C)

99.87(FP)

182.64(FP)

4.50 57

69°34'50"(F)

67.83(FP)

54.00(FP)

243.35(FP)

160.82(FP)

771.83(FP)

160.82(FP)

771.83(FP)

160.82(FP)

771.83(FP)

160.82(FP)

125°27'03"(C)

99.87(FP)

182.64(FP)

4.50 57

69°34'50"(F)

67.83(FP)

54.00(FP)

243.35(FP)

160.82(FP)

771.83(FP)

160.82(FP)

771.83(FP)

160.82(FP)

771.83(FP)

160.82(FP)

125°27'03"(C)

99.87(FP)

182.64(FP)

4.50 57

69°34'50"(F)

67.83(FP)

54.00(FP)

243.35(FP)

160.82(FP)

771.83(FP)

160.82(FP)

771.83(FP)

160.82(FP)

771.83(FP)

160.82(FP)

125°27'03"(C)

99.87(FP)

182.64(FP)

4.50 57

69°34'50"(F)

67.83(FP)

54.00(FP)

243.35(FP)

160.82(FP)

771.83(FP)

160.82(FP)

771.83(FP)

160.82(FP)

771.83(FP)

160.82(FP)

125°27'03"(C)

99.87(FP)

182.64(FP)

4.50 57

69°34'50"(F)

67.83(FP)

54.00(FP)

243.35(FP)

160.82(FP)

771.83(FP)

160.82(FP)

771.83(FP)

160.82(FP)

771.83(FP)

160.82(FP)

125°27'03"(C)

99.87(FP)

182.64(FP)

4.50 57

69°34'50"(F)

67.83(FP)

54.00(FP)

243.35(FP)

160.82(FP)

771.83(FP)

160.82(FP)

771.83(FP)

160.82(FP)

771.83(FP)

160.82(FP)

125°27'03"(C)

99.87(FP)

182.64(FP)

4.50 57

69°34'50"(F)

67.83(FP)

54.00(FP)

243.35(FP)

160.82(FP)

771.83(FP)

160.82(FP)

771.83(FP)

160.82(FP)

771.83(FP)

160.82(FP)

125°27'03"(C)

99.87(FP)

182.64(FP)

4.50 57

69°34'50"(F)

67.83(FP)

54.00(FP)

243.35(FP)

160.82(FP)

771.83(FP)

160.82(FP)

771.83(FP)

160.82(FP)

771.83(FP)

160.82(FP)

125°27'03"(C)

99.87(FP)

182.64(FP)

4.50 57

69°34'50"(F)

67.83(FP)

54.00(FP)

243.35(FP)

160.82(FP)

771.83(FP)

160.82(FP)

771.83(FP)

160.82(FP)

771.83(FP)

160.82(FP)

125°27'03"(C)

99.87(FP)

182.64(FP)

4.50 57

69°34'50"(F)

67.83(FP)

54.00(FP)

243.35(FP)

160.82(FP)

771.83(FP)

160.82(FP)

771.83(FP)

160.82(FP)

771.83(FP)

160.82(FP)

125°27'03"(C)

99.87(FP)

182.64(FP)

4.50 57

69°34'50"(F)

67.83(FP)

54.00(FP)

243.35(FP)

160.82(FP)

771.83(FP)

160.82(FP)

771.83(FP)

160.82(FP)

771.83(FP)

160.82(FP)

125°27'03"(C)

99.87(FP)

182.64(FP)

4.50 57

69°34'50"(F)

67.83(FP)

54.00(FP)

243.35(FP)

160.82(FP)

771.83(FP)

160.82(FP)

771.83(FP)

160.82(FP)

771.83(FP)

160.82(FP)

125°27'03"(C)

99.87(FP)

182.64(FP)

4.50 57

69°34'50"(F)

67.83(FP)

54.00(FP)

243.35(FP)

160.82(FP)

771.83(FP)

160.82(FP)

771.83(FP)

160.82(FP)

771.83(FP)

160.82(FP)

125°27'03"(C)

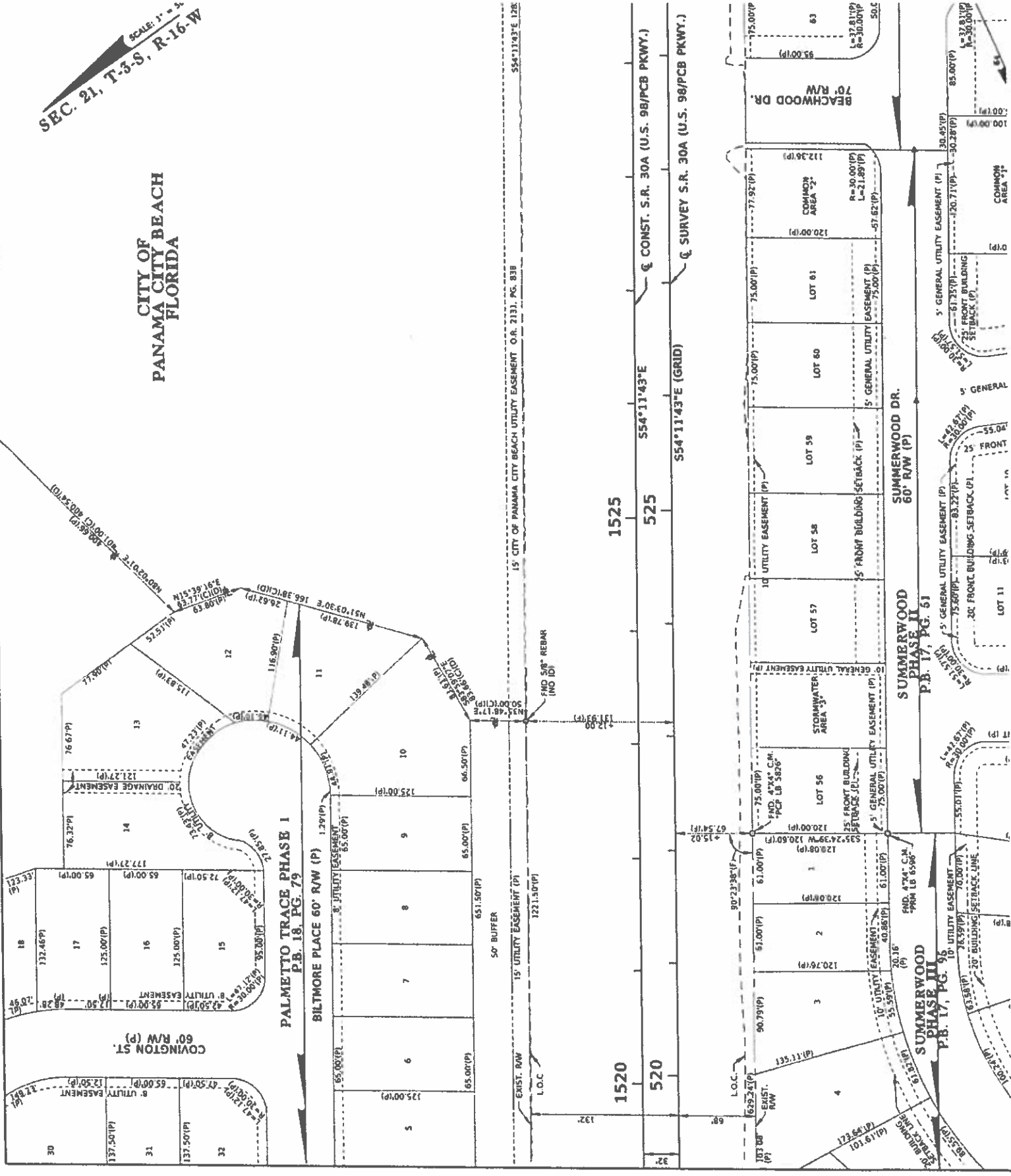
99.87(FP)

182.64(FP)

4.50 57

SCALE: 1" = 50'  
 SEC. 21, T-3-S, R-16-W

CITY OF PANAMA CITY BEACH  
 FLORIDA



15' CITY OF PANAMA CITY BEACH UTILITY EASEMENT O.R. 2131, PG. 83B  
 S54°11'43"E 128'

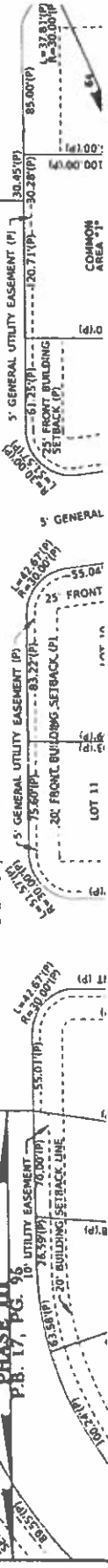
1525  
 525  
 554°11'43"E  
 554°11'43"E (GRID)  
 520  
 1520

1525  
 525  
 554°11'43"E  
 554°11'43"E (GRID)  
 520  
 1520

LOT 56  
 LOT 57  
 LOT 58  
 LOT 59  
 LOT 60  
 LOT 61  
 LOT 62  
 LOT 63

LOT 1  
 LOT 2  
 LOT 3  
 LOT 4  
 LOT 5

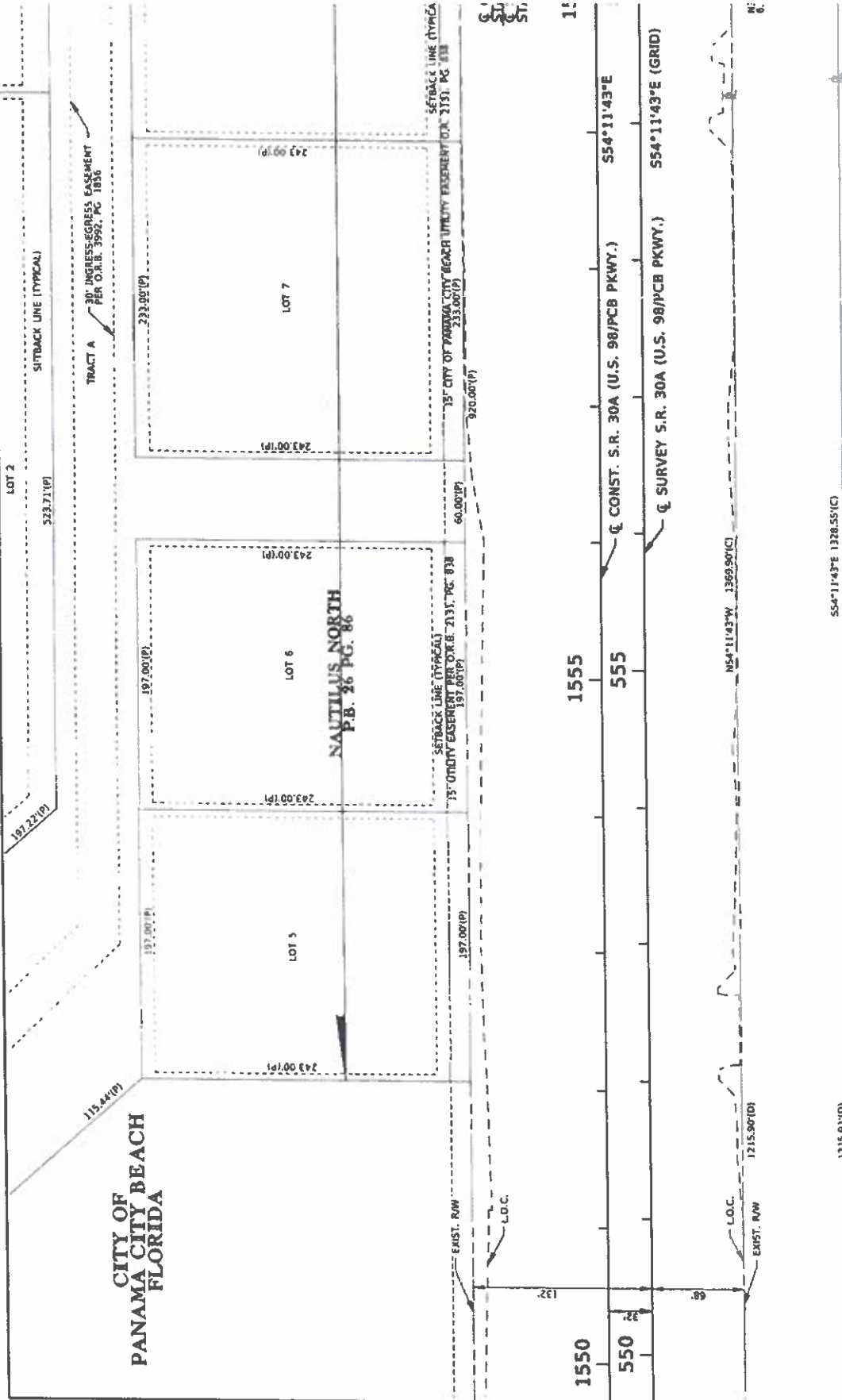
LOT 6  
 LOT 7  
 LOT 8  
 LOT 9  
 LOT 10  
 LOT 11





CITY OF PANAMA CITY BEACH  
FLORIDA

NAUTILUS NORTH  
P.B. 26 PG. 86



1550

550

1555

555

1:

1:

1215.91'(D)

554°11'43"E 1328.55'(C)

NS4°11'43"W 1359.90'(C)

Q CONST. S.R. 30A (U.S. 98/PCB PKWY.)

Q SURVEY S.R. 30A (U.S. 98/PCB PKWY.)

554°11'43"E

554°11'43"E (GRID)

1215.90'(D)

6:



FIND 5/1  
-LB 04  
530.72  
530.74

O.R. 2019  
P.C. 253

CITY OF  
PANAMA CITY BEACH  
FLORIDA

SEC. 21, T-3-S R-16-W  
Scale: 1" = 50'

OWNER:  
BAY COUNTY

101  
TS15

S54.1143°E 541.55(C)

POND 2

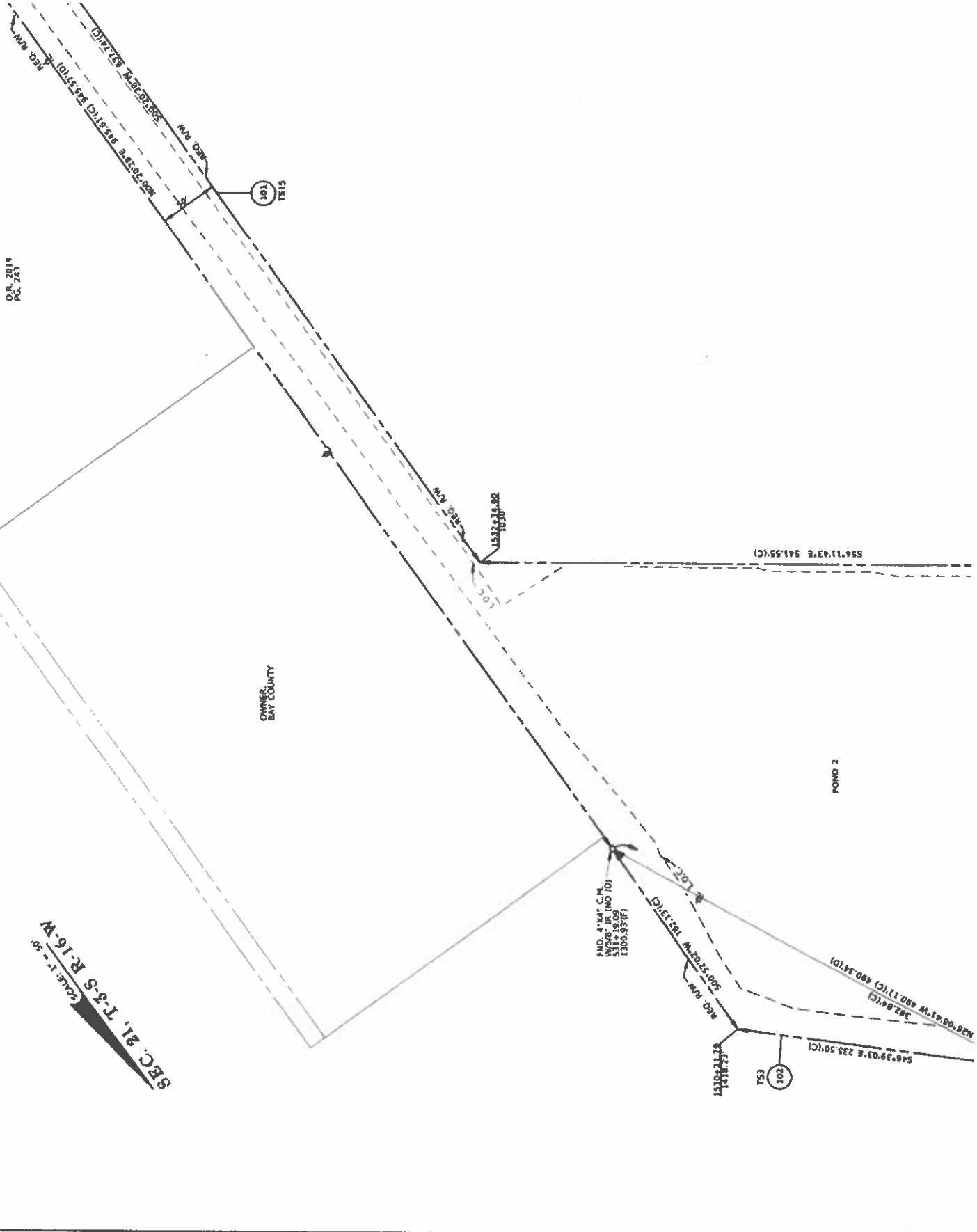
FIND 4"X4" C.M.  
W/5/8" IR (NO ID)  
531 + 19.09  
1300.55 (F)

101  
ESL

S46.3903°E 235.50(C)

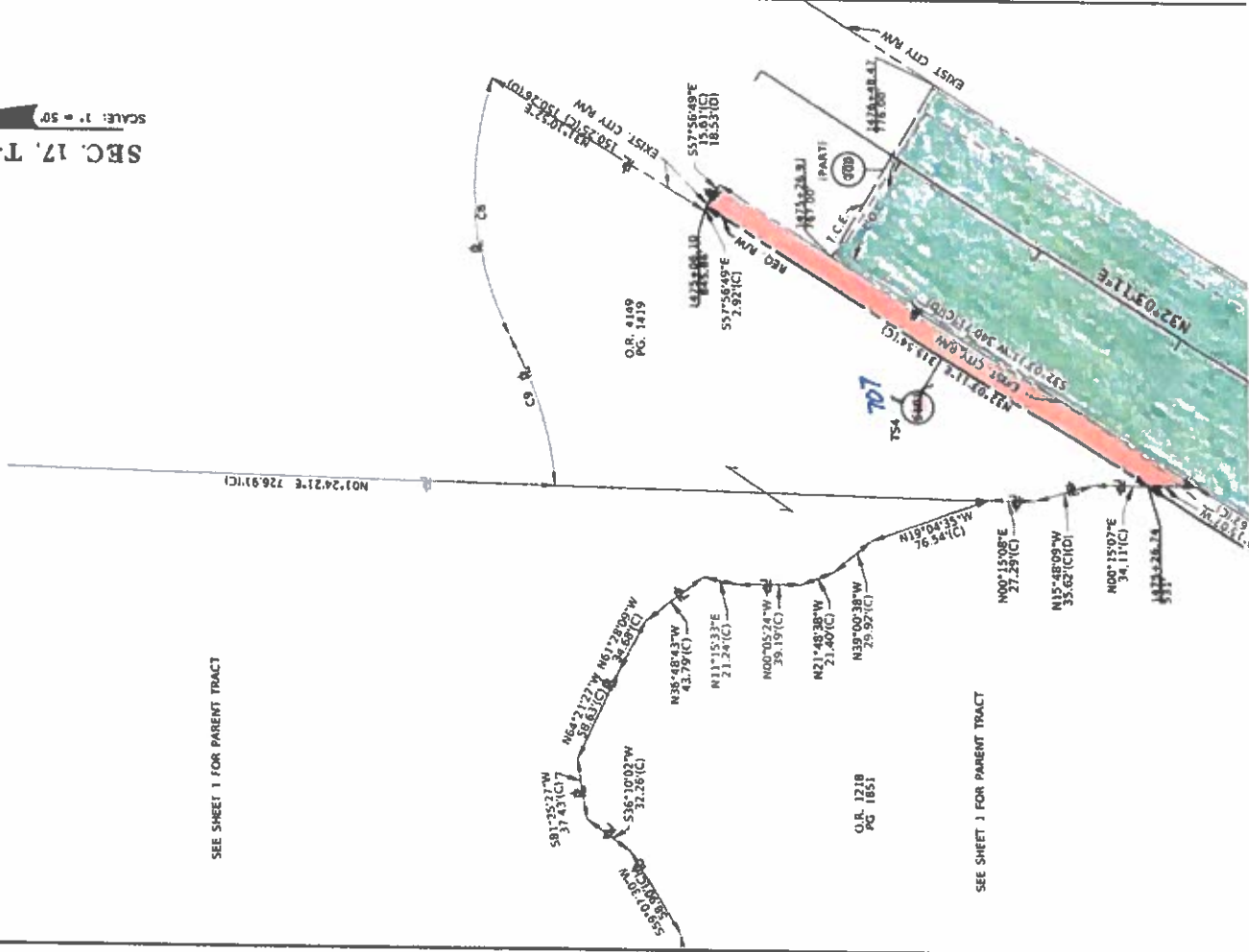
S82.0541°W 480.37(C) 480.34(10)

S82.04(C)



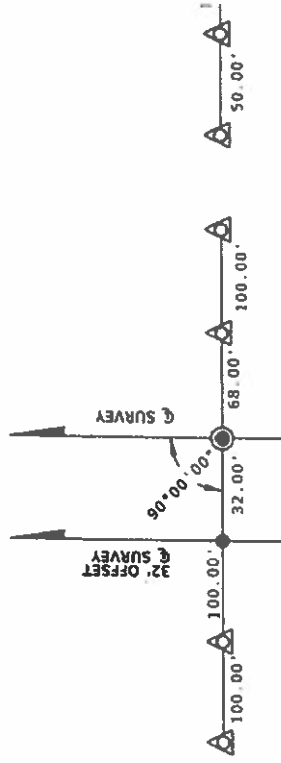
CURVE DATA					
CURVE	T.B. BACK	DELTA	RADIUS	LENGTH	T.S. AHEAD
CB	N70°11'39"W	46°54'46" (LT.)	195.00'	159.66'(C)	562°53'35"W
C9	S67°18'39"W	22°23'22" (RT.)	245.00'	95.74'(CHD)	S84°42'01"W

SEC. 17, T-3-S, R-16-W  
SCALE: 1" = 50'



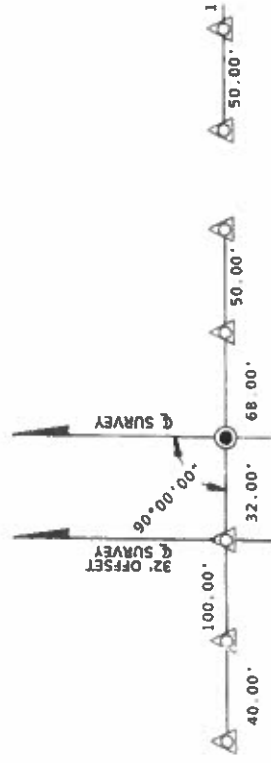
SEE SHEET 1 FOR PARENT TRACT

SEE SHEET 1 FOR PARENT TRACT



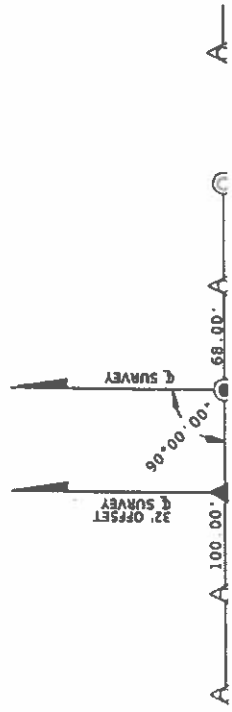
B.O.S. STA. 446+00.00

P.C.



STA. 495+00.00

S



OF

TABLE

PARCEL NO.	SHEET NO.	NAME	AREA TAKEN	REMAINDERS		COMMENTS
				LEFT	RIGHT	
100	1,4,5	PIER PARK, LLC	5,255 AC	0	18,532 AC	
101	8,9,12	CRAMER BEACH PROPERTIES, LLC	5,056 AC	20,332 AC	0	REMAINDER OVER 40 AC.
102	1,12	THE ST. JOE COMPANY	15,816 SF	---	---	
700	4,7,9-11,13	CITY OF PANAMA CITY BEACH, FL	---	---	---	TEMPORARY CONSTRUCTION EASEMENT
701	1,3	CITY OF PANAMA CITY BEACH, FL	1823 SF	---	---	TEMPORARY CONSTRUCTION EASEMENT-REMAINDER
702	1,5,6	PANAMA CITY BEACH VENTURE II, LLC	6793 SF	---	---	TEMPORARY CONSTRUCTION EASEMENT-REMAINDER
703	6	REGIONS BANK	249 SF	0	1,270 AC	TEMPORARY CONSTRUCTION EASEMENT
704	6	MCDONALDS USA, LLC	290 SF	0	1,162 AC	TEMPORARY CONSTRUCTION EASEMENT
705	9,10	NAUTILUS COMMERCIAL CENTER OWNERS ASSOC., INC.	1312 SF	0	4,657 AC	TEMPORARY CONSTRUCTION EASEMENT
706	11	PANAMA CITY BEACH PARKWAY 14111 CENTER, LLC	25 SF	0	9545 SF	TEMPORARY CONSTRUCTION EASEMENT
1100	1,4,5,13	THE ST. JOE COMPANY	8963 SF	9,764 AC	0	ACQUIRED FOR CITY OF PANAMA CITY BEACH
1101	1,13	CITY OF PANAMA CITY BEACH, FL	5122 SF	30,730 AC	0	ACQUIRED FOR CITY OF PANAMA CITY BEACH
1102	5	RUBY TUESDAY OPERATIONS, LLC	4964 SF	0	1,326 AC	ACQUIRED FOR CITY OF PANAMA CITY BEACH