

**RESOLUTION NO 22-141**

**A RESOLUTION OF THE CITY OF PANAMA CITY BEACH, FLORIDA,  
GRANTING A TEMPORARY CONSTRUCTION EASEMENT TO THE  
STATE OF FLORIDA DEPARTMENT OF TRANSPORTATION FOR THE  
SR 30 (US 98) IMPROVEMENT PROJECT.**

**WHEREAS**, the State of Florida Department of Transportation (FDOT) proposes to construct or improve State Road 30 (US 98/PCB Pkwy.), Financial Project 2178383, in Bay County, Florida (the "Project"); and

**WHEREAS**, it is necessary that certain lands now owned by the City be used temporarily by FDOT in furtherance of that Project; and

**WHEREAS**, said use is in the best interests of the City; and

**WHEREAS**, FDOT has made application to the City to execute and deliver to FDOT the attached temporary easement in favor of FDOT (Parcel 701.1, Project 2178383), for the purpose of constructing the project according to current construction plans, and said request having been duly considered.

**NOW THEREFORE BE IT RESOLVED** by the City Council of the City of Panama City Beach, Florida, that the application of the State of Florida Department of Transportation for a temporary easement is for transportation purposes which are the public or community interest and for public welfare; that a temporary easement in favor of the State of Florida Department of Transportation, in Panama City Beach, Florida, should be drawn and executed by the appropriate officers of the City. Consideration shall be \$1.00.

**AND BE IT FURTHER RESOLVED** that a certified copy of this Resolution be forwarded forthwith to the State of Florida Department of Transportation at 1074 Highway 90, Chipley, Florida 32423.

**THIS RESOLUTION** shall be effective immediately upon passage.

**PASSED** in regular session this 28<sup>th</sup> day of April, 2021.

**CITY OF PANAMA CITY BEACH**

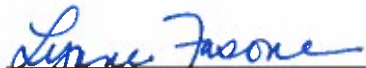
By: MSH  
Mark Sheldon, Mayor

**ATTEST:**

Lynne Fasone  
Lynne Fasone, City Clerk

**STATE OF FLORIDA  
CITY OF PANAMA CITY BEACH**

I HEREBY CERTIFY that the foregoing is a true copy of a Resolution adopted by the City Council of Panama City Beach, Florida, at a meeting held on the 28<sup>th</sup> day of April, 2022.



\_\_\_\_\_  
Lynne Fasone, City Clerk



IN WITNESS WHEREOF, the said grantor has caused these presents to be executed in its name by its Mayor, and its seal to be hereto affixed, attested by its City Clerk, the date first above written.

ATTEST: Lynne Fasone  
Lynne Fasone  
Its City Clerk

The City of Panama City Beach

By: Drew Whitman  
Drew Whitman, City Manager

STATE OF FLORIDA

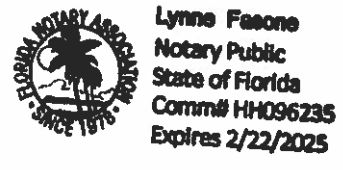
COUNTY OF BAY

The foregoing instrument was acknowledged before me, by means of  physical presence or  online notarization, this 11<sup>th</sup> day of May, 2022, by Drew Whitman, who is personally known to me or who has produced \_\_\_\_\_ as identification.

Lynne Fasone

(Type/print or stamp name under signature)  
Title or rank (Serial No., if any) \_\_\_\_\_

Affix Seal





## Florida Department of Transportation

RON DESANTIS  
GOVERNOR

KEVIN J. THIBAUT, P.E.  
SECRETARY

### Donation of Property to the Florida Department of Transportation

City of Panama City Beach  
17007 Panama City Beach Pkwy  
Panama City Beach, FL 32413

ITEM/SEGMENT NO.:	<u>2178383</u>
MANAGING DISTRICT:	<u>3</u>
F.A.P. NO.:	<u>N/A</u>
STATE ROAD NO.:	<u>30A (US 98/PCB Pkwy)</u>
COUNTY:	<u>Bay</u>
PARCEL NO.:	<u>700-701-707</u>
INTEREST CONVEYED:	<u>Temporary Easements</u>

This is to advise that the undersigned, as owner of the property or property interest referenced above and as shown on Right of Way maps for referenced project, desires to make a voluntary donation of said property or property interest to the State of Florida for the use and benefit of the Florida Department of Transportation.

The undersigned hereby acknowledges that he/she has been fully advised by a Department representative of his/her right to have the referenced property or property interest appraised, to accompany the appraiser during the appraisal inspection of the property, to receive full compensation for the above referenced property, and to receive reimbursement for reasonable fees and costs incurred, if any. Having been fully informed of the above rights, I hereby waive those rights unless otherwise noted below.

Owner's Signature

City of Panama City Beach, a Municipality of the State of FL

Type or Print Property Owner's Name

17007 Panama City Beach Parkway

Street Address

Panama City Beach, FL 32413

City, State, Zip Code

5-11-22

Date

- AC = ACRE
- AHD = AHEAD
- APPROX. = APPROXIMATE
- B = BASILINE
- BC = BACK
- B.O.S. = BEGINNING OF SURVEY
- B.S.L. = BUILDING SETBACK LINE
- C = CURVE
- CR = CHORD BEARING
- CO. = COUNTY
- COM. = COMMERCIAL
- CONC. = CONCRETE
- COR. = CORNER
- CONST. = CONSTRUCTION
- CL = CENTERLINE
- CLC = CALCULATED
- C.M. = CONCRETE MONUMENT
- C.R. = COUNTY ROAD
- D = DEGREE
- DI = DEED
- D.B. = DEED BOOK
- D.E. = DRAINAGE EASEMENT
- E = EAST
- E.O.S. = END OF SURVEY
- EXIST. = EXISTING
- ESMT = EASEMENT
- E.D.E. = EXISTING DRAINAGE EASEMENT
- ESC. = ESCAMBIA
- Δ = CURVE DELTA ANGLE
- FOUN. = FOUND
- FT = FIELD

T-3-S, R-16-W  
SCALE: 1" = 400'

7 8  
18 17

FND 4"X4" C.M.  
"BDI PRM CORPS 0340"

GULF HIGHLANDS  
PB 8, PG. 79

BEGIN R/W PROJECT  
F.P. No. 2178383  
STA. 441+00.00

FND 6"X6" C.M.  
"SIPC"  
EAST HALF SEC 18

450

569°52'27"E (GRID)

SHEET 3

18 17

19 20

FND 6"X6" C.M.  
"SIPC"

CITY OF  
PANAMA CITY BEACH  
FLORIDA

G SURVEY S.R. 30A  
U.S. 98/PCB PKWY.  
STA. 458+21.53 =  
G MANDY LN.  
STA. 30+00.00

G SURVEY S.R. 30A  
U.S. 98/PCB PKWY.  
STA. 471+49.34 =  
G PIER PARK DR.  
STA. 30+00.00

G SURVEY S.R. 30A  
U.S. 98/PCB PKWY.  
STA. 496+83.76 =  
G POWELL ADAMS RD.  
STA. 63+26.74

G SURVEY S.R. 30A  
U.S. 98/PCB PKWY.  
STA. 499+36.35

G SURVEY S.R. 30A  
U.S. 98/PCB PKWY.  
STA. 458+21.53 =  
G MANDY LN.  
STA. 30+00.00

G SURVEY S.R. 30A  
U.S. 98/PCB PKWY.  
STA. 471+49.34 =  
G PIER PARK DR.  
STA. 30+00.00

G SURVEY S.R. 30A  
U.S. 98/PCB PKWY.  
STA. 496+83.76 =  
G POWELL ADAMS RD.  
STA. 63+26.74

G SURVEY S.R. 30A  
U.S. 98/PCB PKWY.  
STA. 499+36.35

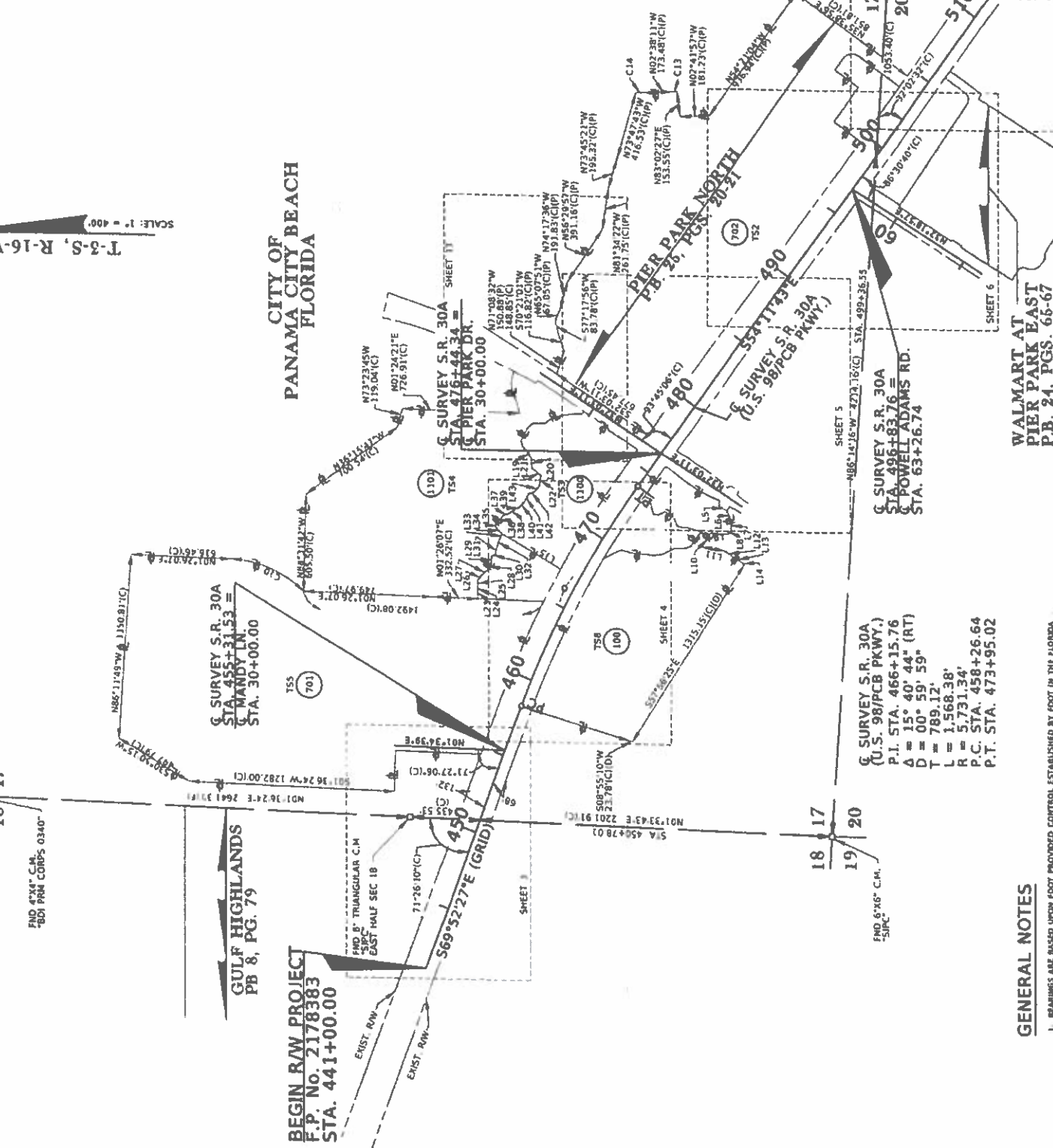
G SURVEY S.R. 30A  
U.S. 98/PCB PKWY.  
STA. 458+21.53 =  
G MANDY LN.  
STA. 30+00.00

G SURVEY S.R. 30A  
U.S. 98/PCB PKWY.  
STA. 471+49.34 =  
G PIER PARK DR.  
STA. 30+00.00

G SURVEY S.R. 30A  
U.S. 98/PCB PKWY.  
STA. 496+83.76 =  
G POWELL ADAMS RD.  
STA. 63+26.74

G SURVEY S.R. 30A  
U.S. 98/PCB PKWY.  
STA. 499+36.35

G SURVEY S.R. 30A  
U.S. 98/PCB PKWY.  
STA. 458+21.53 =  
G MANDY LN.  
STA. 30+00.00



**GENERAL NOTES**

1. EASEMENTS ARE BASED UPON FOOT PROCEEDED CONTROL ESTABLISHED BY FOOT IN THE FLORIDA

WALMART AT  
PIER PARK EAST  
P.B. 24, PGS. 66-67

PALMI  
PHASE  
P.B. 18

16 15

21 22

1489°26'17"W 5325.93'(F)

FWD 17" REBAR  
(NO ID)

101  
TSS

SHEET 12  
 G. GULF BLVD.  
 P.I. STA. 31+04.79  
 A = 12° 29' 57" (LT)  
 D = 22° 55' 06"  
 L = 27.38'  
 R = 54.54'  
 R = 250.00'  
 P.C. STA. 30+77.41  
 P.T. STA. 31+31.95

CITY OF  
 PANAMA CITY BEACH  
 FLORIDA

SUMMERWOOD  
 PHASE II  
 P.B. 17, PG. 51

SUMMERWOOD  
 PHASE I  
 P.B. 16, PG. 61

SURVEY S.R. 30A  
 (U.S. 98/PCB PKWY.)

SURVEY S.R. 30A  
 STA. 544+15.78 =  
 G. GULF BLVD.  
 STA. 29+67.93

OPEN SANDS ON THE  
 GULF OF MEXICO  
 P.B. 8, PG. 67

SURVEY S.R. 30A  
 STA. 561+93.45 =  
 G. NAUTILUS ST.  
 STA. 30+00.00  
 NAUTILUS  
 NORTH  
 P.B. 26 PG. 86

SURVEY S.R. 30A  
 STA. 562+09.95 =  
 G. NAUTILUS ST.  
 STA. 59+42.17

SEA CLUSION  
 BEACH  
 P.B. 16, PG. 39

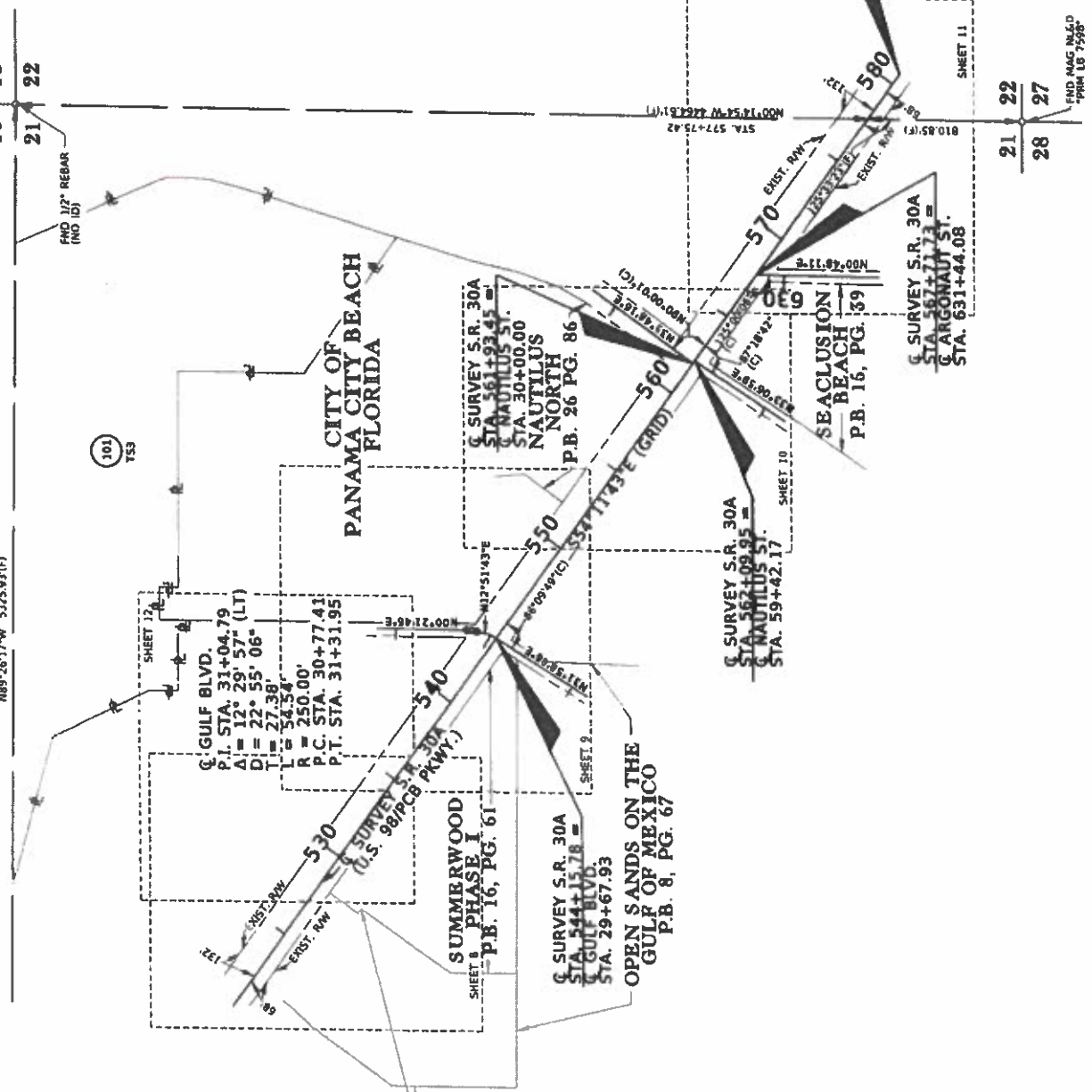
SURVEY S.R. 30A  
 STA. 567+77.13 =  
 G. ARGONAUT ST.  
 STA. 631+44.08

END R/W  
 F.P. No. 2  
 STA. 580

21 22

28 27

END MAG INCLD  
-PRIM LB-7568-

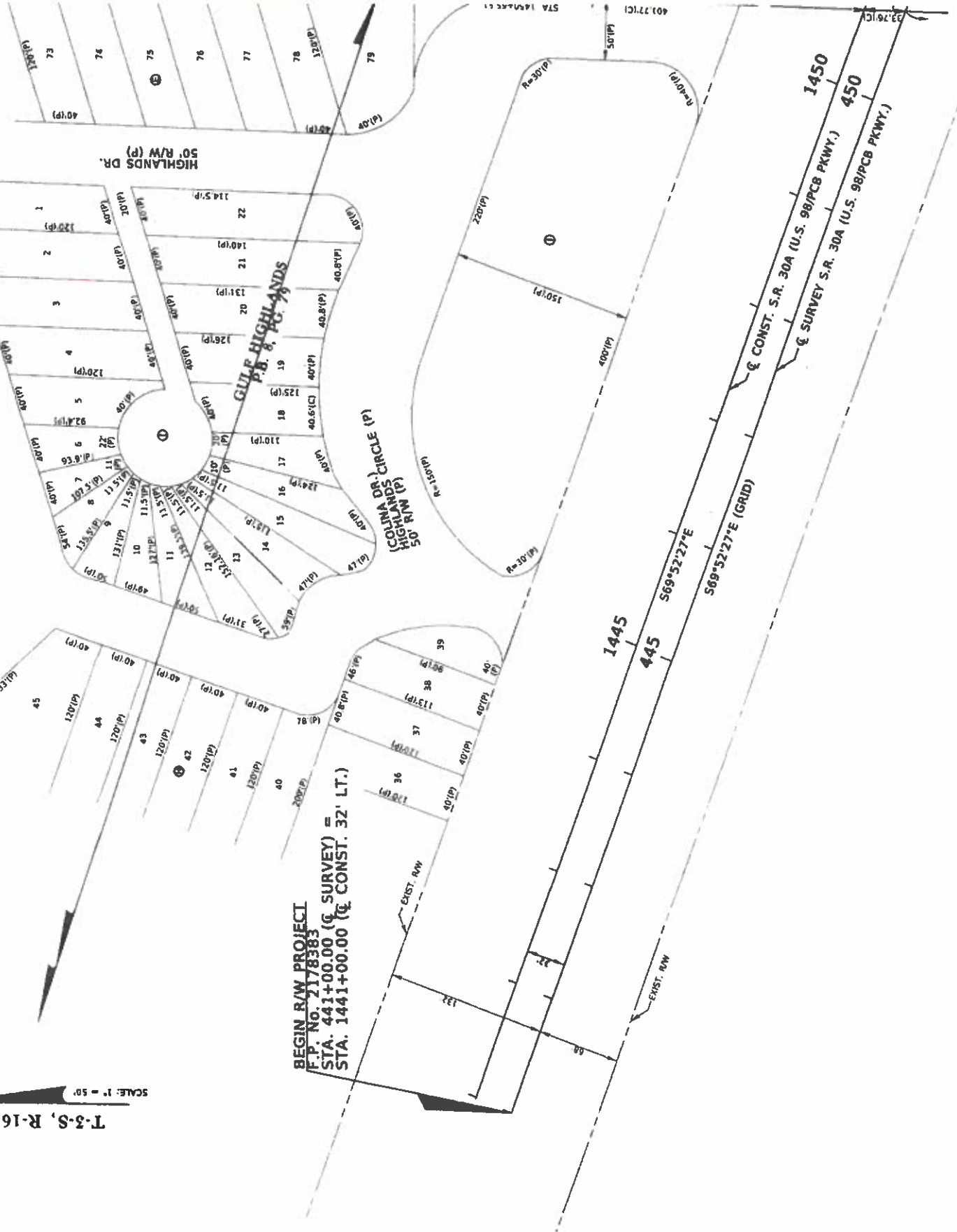


**CITY OF  
PANAMA CITY BEACH  
FLORIDA**

1.  
END 4"X4" C.M.  
-BDI P.M. CORPS 0340

**T-3-S, R-16-W**  
SCALE: 1" = 50'

**BEGIN R/W PROJECT**  
F.P. No. 2178383  
STA. 441+00.00 (C SURVEY) =  
STA. 1441+00.00 (C CONST. 32' LT.)



**HIGHLANDS DR. 50' R/W (P)**

**GULF HIGHLANDS  
P.B. & M.C. 7805**

**COLINA DR. CIRCLE (P)  
HIGHLANDS  
(COLINA DR. R/W 50')**

**STA. 1450+00.00**

**569°52'27"E (GRID)**

**569°32'27"E (GRID)**

**CONST. S.R. 30A (U.S. 98/PCB PKWY.)**

**SURVEY S.R. 30A (U.S. 98/PCB PKWY.)**

**1445**

**445**

**1450**

**401.77(1)**

**33.76(1)**

**50'(P)**

**400'(P)**

**150'(P)**

**220'(P)**

**R=30'(P)**

**R=50'(P)**

**40'(P)**

**40'(P)**

**40'(P)**

**40'(P)**

**40'(P)**

**40'(P)**

**40'(P)**

**40'(P)**

**40'(P)**

**40'(P)**

**40'(P)**

**40'(P)**

**40'(P)**

**40'(P)**

**40'(P)**

**40'(P)**

**40'(P)**

**40'(P)**

**40'(P)**

**40'(P)**

**40'(P)**

**40'(P)**

**40'(P)**

**40'(P)**

**40'(P)**

**40'(P)**

**40'(P)**

**40'(P)**

**40'(P)**

**40'(P)**

**40'(P)**

**40'(P)**

**40'(P)**

**40'(P)**

**40'(P)**

**40'(P)**

**40'(P)**

**40'(P)**

**40'(P)**

**40'(P)**

**40'(P)**

**40'(P)**

**40'(P)**

**40'(P)**

**40'(P)**

**40'(P)**

**40'(P)**

**40'(P)**

**40'(P)**

**40'(P)**

**40'(P)**

**40'(P)**

**40'(P)**

**40'(P)**

**40'(P)**

**40'(P)**

**40'(P)**

**40'(P)**

**40'(P)**

**40'(P)**

**40'(P)**

**40'(P)**

**40'(P)**

**40'(P)**

**40'(P)**

**40'(P)**

**40'(P)**

**40'(P)**

**40'(P)**

**40'(P)**

**40'(P)**

**40'(P)**

**40'(P)**

**40'(P)**

**40'(P)**

**40'(P)**

**40'(P)**

**40'(P)**

**40'(P)**

**40'(P)**

**40'(P)**

**40'(P)**

**40'(P)**

**40'(P)**

**40'(P)**

**40'(P)**

**40'(P)**

**40'(P)**

**40'(P)**

**40'(P)**

**40'(P)**

**40'(P)**

**40'(P)**

**40'(P)**

**40'(P)**

**40'(P)**

**40'(P)**

**40'(P)**

**40'(P)**

**40'(P)**

**40'(P)**

**40'(P)**

**40'(P)**

**40'(P)**

**40'(P)**

**40'(P)**

**40'(P)**

**40'(P)**

**40'(P)**

**40'(P)**

**40'(P)**

**40'(P)**

**40'(P)**

**40'(P)**

**40'(P)**

**40'(P)**

**40'(P)**

**40'(P)**

**40'(P)**

**40'(P)**

**40'(P)**

**40'(P)**

**40'(P)**

**40'(P)**

**40'(P)**

**40'(P)**

**40'(P)**

**40'(P)**

**40'(P)**

**40'(P)**

**40'(P)**

**40'(P)**

**40'(P)**

**40'(P)**

**40'(P)**

**40'(P)**

**40'(P)**

**40'(P)**

**40'(P)**

**40'(P)**

**40'(P)**

**40'(P)**

**40'(P)**

**40'(P)**

**40'(P)**

**40'(P)**

**40'(P)**

**40'(P)**

**40'(P)**

**40'(P)**

**40'(P)**

**40'(P)**

**40'(P)**

**40'(P)**

**40'(P)**

**40'(P)**

**40'(P)**

**40'(P)**

**40'(P)**

**40'(P)**

**40'(P)**

**40'(P)**

**40'(P)**

**40'(P)**

**40'(P)**

**40'(P)**

**40'(P)**

**40'(P)**

**40'(P)**

**40'(P)**

**40'(P)**

**40'(P)**

**40'(P)**

**40'(P)**

**40'(P)**

**40'(P)**

**40'(P)**

**40'(P)**

**40'(P)**

**40'(P)**

**40'(P)**

**40'(P)**

**40'(P)**

**40'(P)**

**40'(P)**

**40'(P)**

**40'(P)**

**40'(P)**

**40'(P)**

**40'(P)**

**40'(P)**

**40'(P)**

**40'(P)**

**40'(P)**

**40'(P)**

**40'(P)**

**40'(P)**

**40'(P)**

**40'(P)**

**40'(P)**

**40'(P)**

**40'(P)**

**40'(P)**

**40'(P)**

**40'(P)**

**40'(P)**

**40'(P)**

**40'(P)**

**40'(P)**

**40'(P)**

**40'(P)**

**40'(P)**

**40'(P)**

**40'(P)**

**40'(P)**

**40'(P)**

**40'(P)**

**40'(P)**

**40'(P)**

**40'(P)**

**40'(P)**

**40'(P)**

**40'(P)**

**40'(P)**

**40'(P)**

**40'(P)**

**40'(P)**

**40'(P)**

**40'(P)**

**40'(P)**

**40'(P)**

**40'(P)**

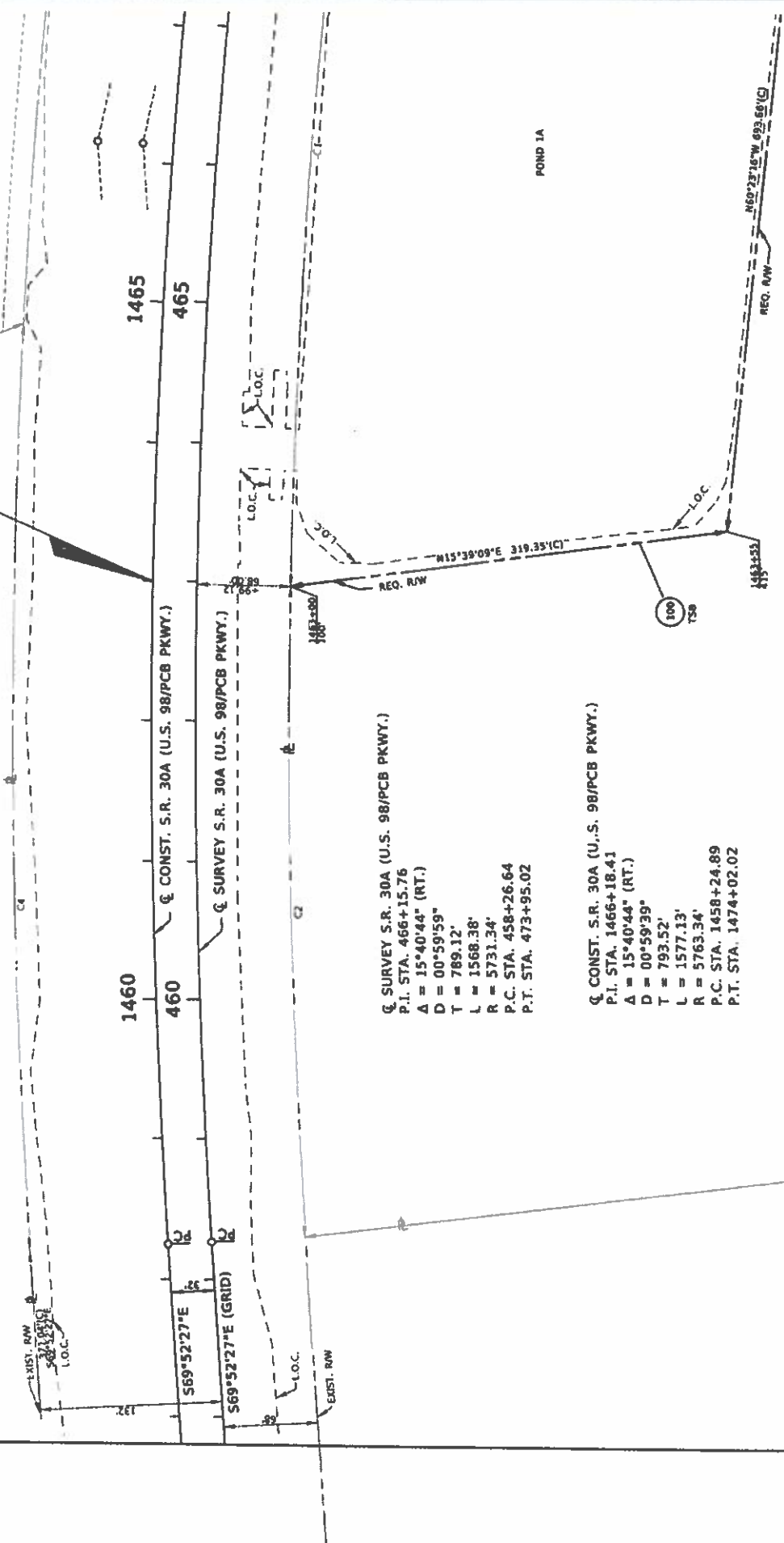
**40'(P)**



CITY OF  
PANAMA CITY BEACH  
FLORIDA

SEE SHEET 1 FOR PARENT TRACT  
PROPERTY OF  
PARCEL 701  
O.R. 2044, PG. 34  
PARCEL 3

BEGIN R/W ACQUISITION (RT.)  
C CONST. STA. 1463+00.00



1460  
460

1465  
465

Q SURVEY S.R. 30A (U.S. 98/PCB PKWY.)  
P.I. STA. 466+15.76  
Δ = 15°40'44" (RT.)  
D = 00°59'59"  
T = 789.12'  
L = 1568.38'  
R = 5731.34'  
P.C. STA. 458+26.64  
P.T. STA. 473+95.02

Q CONST. S.R. 30A (U.S. 98/PCB PKWY.)  
P.I. STA. 1466+18.41  
Δ = 15°40'44" (RT.)  
D = 00°59'39"  
T = 793.52'  
L = 1577.13'  
R = 5763.34'  
P.C. STA. 1458+24.89  
P.T. STA. 1474+02.02

POND 1A

**CITY OF  
PANAMA CITY BEA  
FLORIDA**

SEE SHEET 13

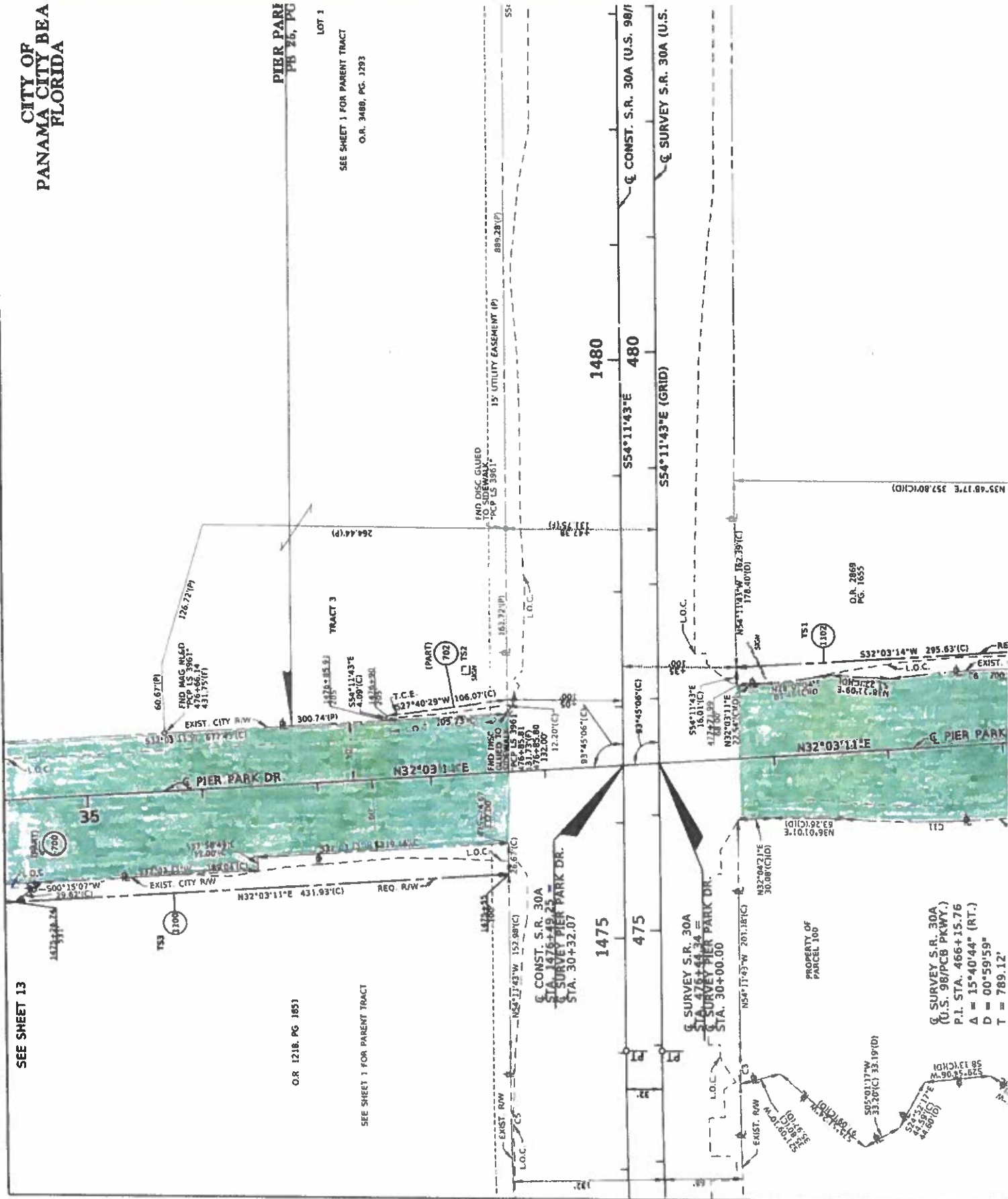
PIER PARK DR  
PB 26, PG

O.R. 1218, PG 1851

LOT 1

SEE SHEET 1 FOR PARENT TRACT  
O.R. 3480, PG. 1293

SEE SHEET 1 FOR PARENT TRACT





FND 87°46' C.M.  
S/PC BASE

16  
17  
20  
21

# CITY OF PANAMA CITY BEACH FLORIDA

SCALE: 1" = 50'  
T-3-S, R-16-W

PIER PARK NORTH  
PB 25, PGS. 20-21

SEE SHEET 1  
FOR  
PARENT TRACT

LOT 2  
PROPERTY OF  
PARCEL 702

554°11'43" E  
S/PC BASE  
S/PC BASE  
S/PC BASE

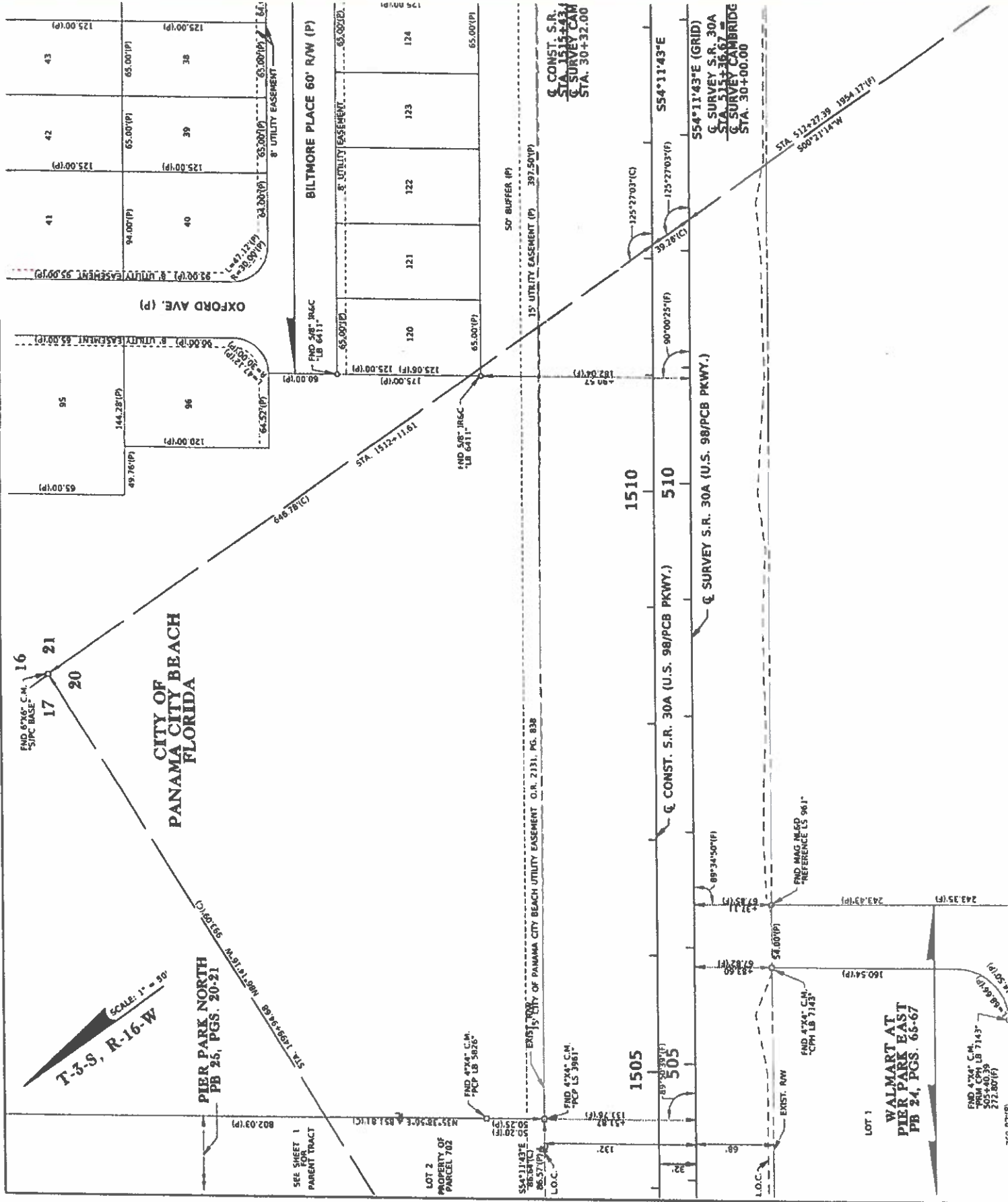
FND 47°44' C.M.  
PCP LS 3961'

FND 47°44' C.M.  
CPH LB 7143'

LOT 1

WALMART AT  
PIER PARK EAST  
PB 24, PGS. 65-67

FND 47°44' C.M.  
FROM CPM LB 7143'  
505+40.38  
272.80(F)



OXFORD AVE. (P)

BALTIMORE PLACE 60' R/W (P)

U.S. 98/PCB PKWY.

50' BUFFER (P)

15' UTILITY EASEMENT (P)

EXIST. 15' CITY OF PANAMA CITY BEACH UTILITY EASEMENT O.R. 2131, PG. B38

554°11'43" E (GRID)

SURVEY S.R. 30A  
STA. 515+36.67  
SURVEY CAMBRIDGE  
STA. 30+00.00

STA. 512+27.39  
S00°12'17.14"W  
1954.17(F)

FND MAG NED  
REFERENCE LS 961'

FND 47°44' C.M.  
CPH LB 7143'

EXIST. RW

L.O.C.

(1) 50' W

(1) 50' W





CITY OF  
PANAMA CITY BEACH  
FLORIDA

TRACT A  
30' INGRESS/EGRESS EASEMENT  
PER O.R.B. 3992, PG. 1856

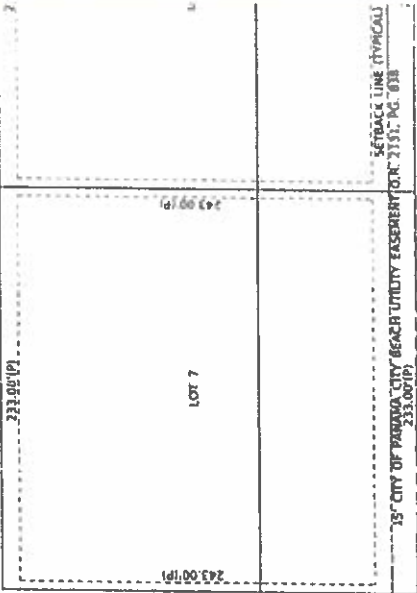
115.44'(P)

LOT 2

SITBACK LINE (TYPICAL)

523.71'(P)

197.22'(P)



Q.C.  
SUA  
Q.S.  
STA.

151

1555

1550

5

555

550

554°11'43"E

554°11'43"E (GRID)

Q CONST. S.R. 30A (U.S. 98/PCB PKWY.)

Q SURVEY S.R. 30A (U.S. 98/PCB PKWY.)

SETBACK LINE (TYPICAL)  
15' CITY OF PANAMA CITY BEACH UTILITY EASEMENT (O.R. 2131, PG. 618)  
243.00'(P)  
197.00'(P)  
60.00'(P)  
920.00'(P)

SETBACK LINE (TYPICAL)  
15' UTILITY EASEMENT PER O.R.B. 2131, PG. 618  
197.00'(P)  
243.00'(P)  
197.00'(P)  
197.00'(P)

EXIST. ROW

L.O.C.

L.O.C.

EXIST. ROW

132'

32'

6'

1215.90'(D)

1215.91'(D)

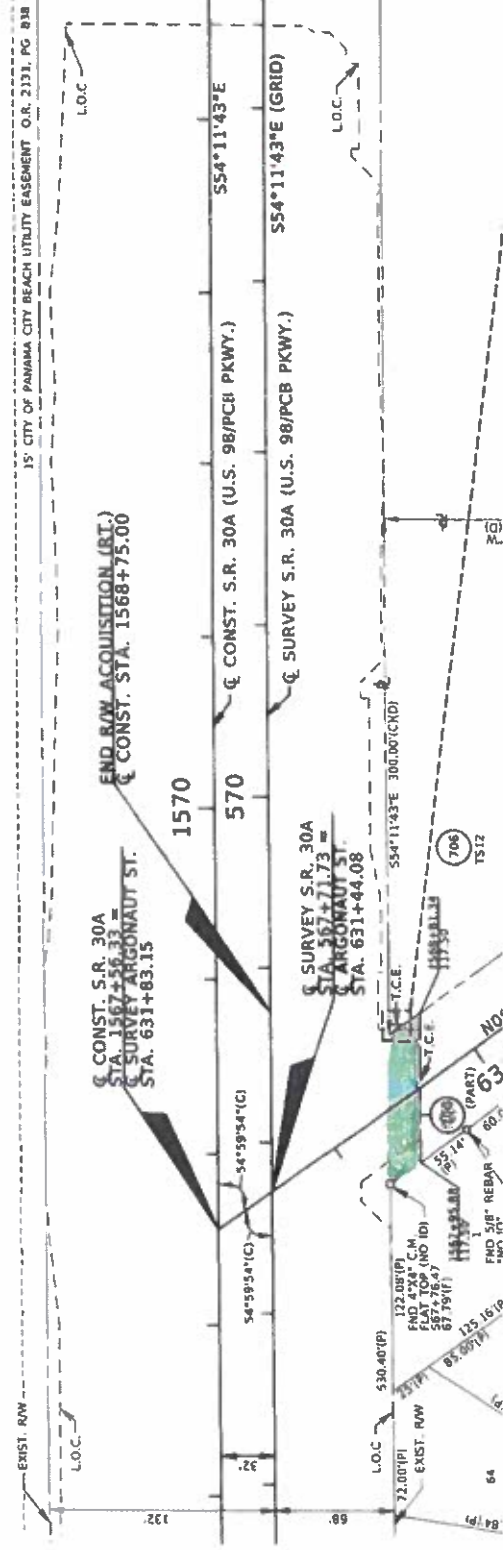
554°11'43"E 1326.55'(C)

N35  
6.00  
H

CITY OF  
PANAMA CITY BEACH  
FLORIDA

SCALE: 1"  
= 30'

FND 1/2" IR (NO ID)  
16  
22  
21





FND SVBT  
LB 6411  
530.9472  
530.7472

DB 2019  
PG. 241

CITY OF  
PANAMA CITY BEACH  
FLORIDA

SEC. 21, T-3-S R-16-W  
SCALE: 1" = 50'

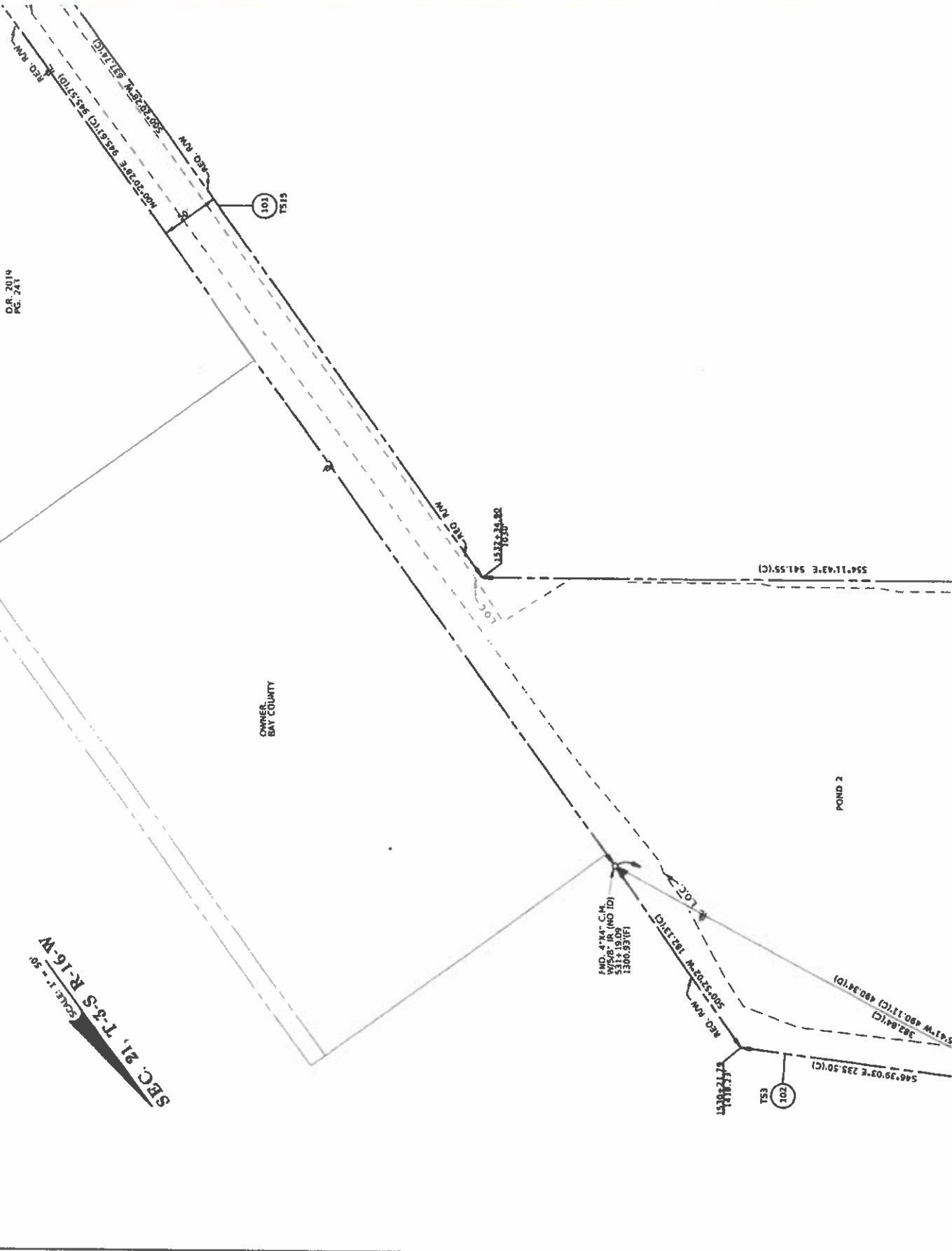
OWNER:  
BAY COUNTY

101  
T315

FND 41'x41' CH  
SW/4th 1/4 (NO ID)  
5311+19.09  
1300.93(F)

102  
T53

POND 2



Q

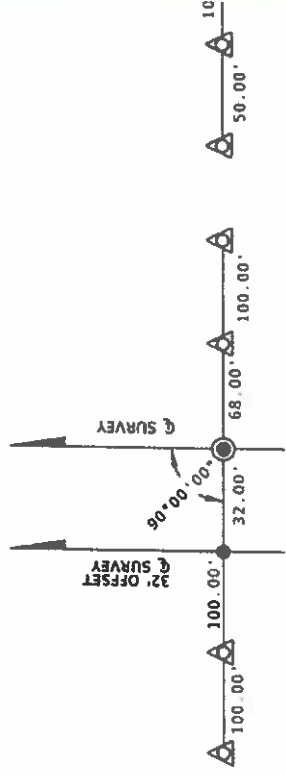
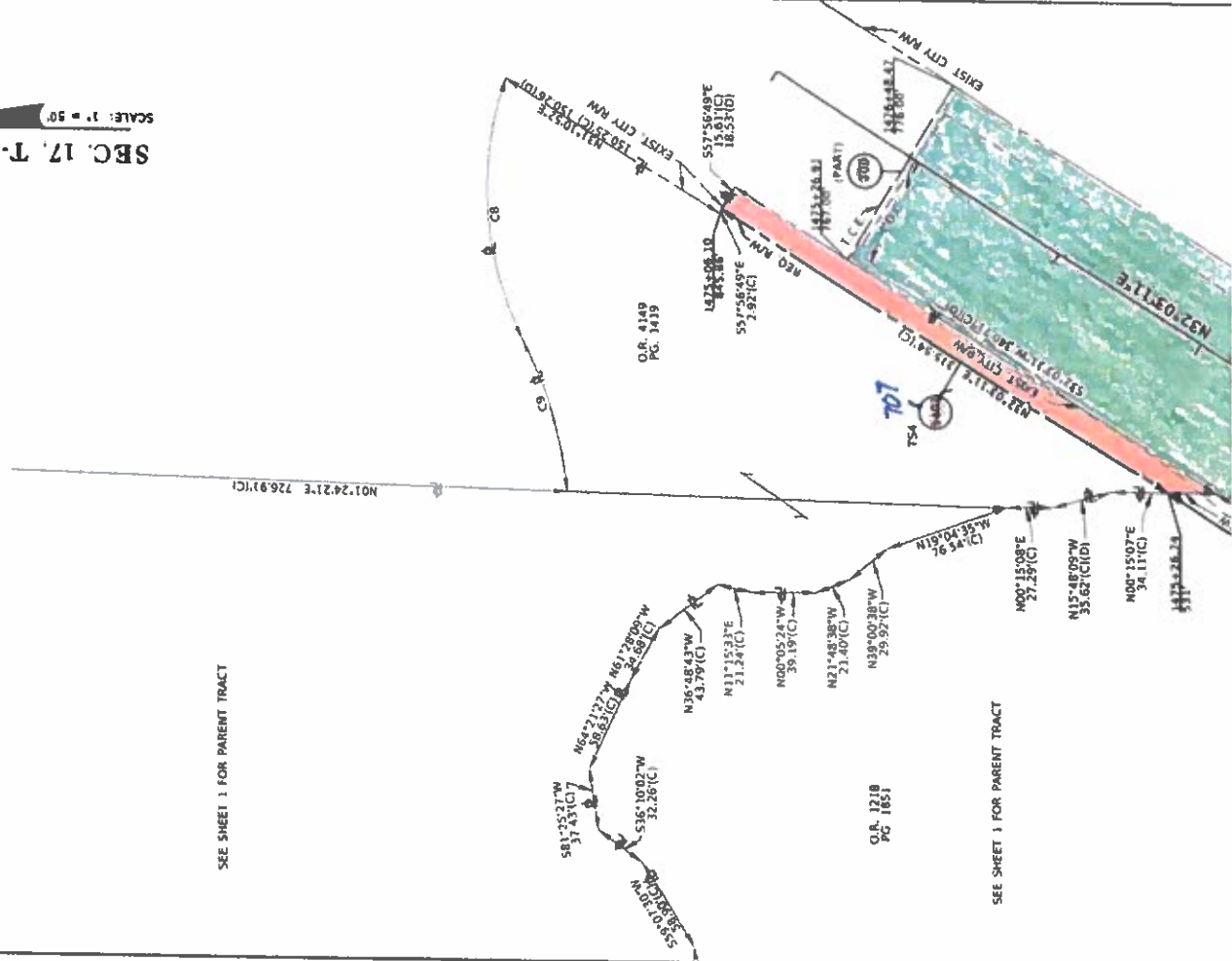
S

SEC. 17, T-3-S, R-16-W  
SCALE: 1" = 50'

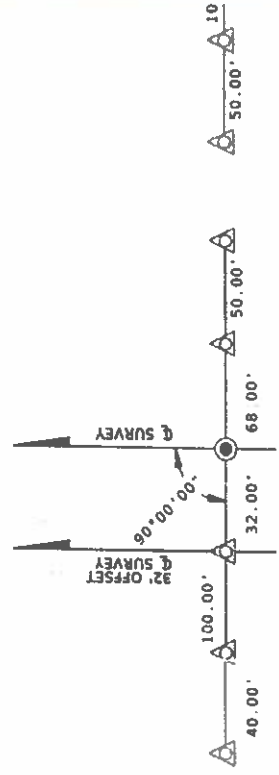
CURVE DATA				
CURVE	T.B. BACK	DELTA	RADIUS	T.B. AHEAD
CB	N70°11'39"W	46°54'48" (LT.)	195.00'	S62°33'35"W
C9	S62°18'39"W	22°23'22" (RT.)	245.00'	S84°42'01"W

SEE SHEET 1 FOR PARENT TRACT

SEE SHEET 3 FOR PARENT TRACT



B.O.S. STA. 446+00.00



STA. 495+00.00

