

Welcome from the CRA Project Team

Hello and welcome to our first edition of the Community Redevelopment Agency (CRA) monthly newsletter! We appreciate your interest in joining the email distribution list. It is our intent to bring you monthly updates and information on the CRA roadway improvements project. The July edition will feature updates on projects currently under construction. We are glad you are here!

The **CRA Project Team** is currently made up of the following entities:

- City of Panama City Beach
- The Corradino Group
- CW Roberts Contracting
- Dewberry Engineers
- Volkert, Inc.

We know progress can be painful and inconvenient at times and major changes can be challenging. The CRA Project Team is making every effort to minimize disruptions to daily routines, traffic routes and business operations. Performing new road construction while still maintaining daily traffic flow and operations is akin to doing mechanical work on an airplane while the airplane is in flight. It is all part of the growth process and we appreciate your patience as the project continues to progress.



Front Beach Road streetscape design.

That being said, once new construction is completed, Panama City Beach residents, business owners and tourists can look forward to a more beautiful and enhanced street/landscape, safer roadways, safer pedestrian pathways and crossings, bicycle lanes, improved traffic flow and functionality, and relocation of aerial utilities underground for storm protection and beautification.

CRA Segment 3

The CRA team continues to make progress on Segment 3 of the roadway improvements project. Segment 3 runs from the intersection of Arnold Road (SR 79) and Panama City Beach Parkway south to Front Beach Road and east to Lullwater Drive.

Segment 3 includes the following improvements:

- | | |
|--|--------------------------|
| • New traffic lanes | • Lighting |
| • New turn lanes | • Signalization |
| • Roundabout at SR79/FBR replacing the 'Y' | • Landscaping |
| • Landscaped medians | • Utility undergrounding |
| • Transit/bicycle lanes | • Stormwater retention |
| • Sidewalks | • Pavement markings |
| | • Signage |



Installing new underground utilities and pipelines while working around existing infrastructure presents many challenges, requiring contractors to be cautious and diligent so no damage or disturbance occurs, while also ensuring no public services are interrupted.

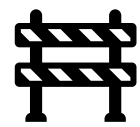
Accomplishments to date include:

- New underground installations include utility, drainage and sewer line improvements as well as pressure testing and sanitizing of water mains. This is ongoing and you will continue to see crews in the trenches below road grade level so they may be hard to spot at times. Please refer to **Table 1** for more specifics on length of water main/sewer/stormwater lines laid to date.



Installation of new 30" diameter storm sewer near San Vincente St. along Arnold Rd., moving north toward Back Beach Rd. The large steel box protects workers in the trench from cave-ins. Due to sandy, collapsible soils and multiple old utilities (gas line in foreground), progress is steady but cautious.

- New reclaimed water main was installed along Back Beach Road west of SR 79/Arnold Road Intersection, on south side of Back Beach Road. The majority of utility underground work to date has been completed west of Arnold Rd on Front Beach Road.
- New sanitary sewer was also installed along Arnold Road from Front Beach Road through the 'Y' to just south of San Vincente Street.
- New potable water mains and lateral service crossings have been installed along Front Beach Road, from west of Cabana Cay Circle to El Centro Blvd, and along Arnold Road from El Centro Blvd north to Innocente Avenue.



**TABLE 1
HIGHLIGHTS OF INSTALLATIONS TO DATE**

Storm Sewer Line Totals

18" storm sewer: 435 linear feet
24" storm sewer: 410 linear feet
42" storm sewer: 20 linear feet
Type 5 curb inlet: 8 each
Type 6 curb inlet: 1 each

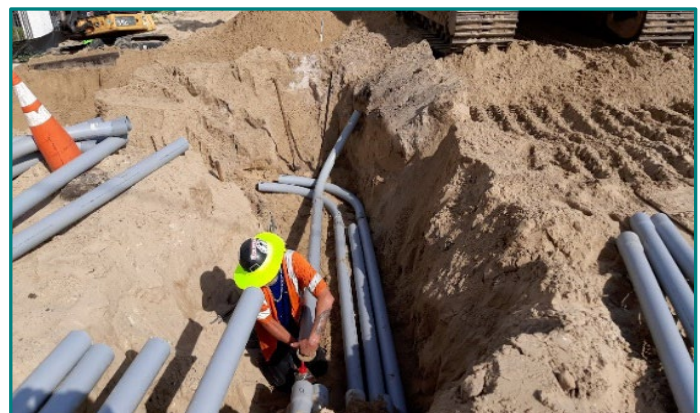
City of Panama City Beach Utilities

Water Main Line Totals

12" water main: 1,970 linear feet
10" water main: 75 linear feet
8" water main: 85 linear feet
6" water main: 20 linear feet
12" reclaimed water main: 505 linear feet
8" reclaimed water main: 535 linear feet
12" gravity sewer main: 480 linear feet

Other Private Utility Facilities

AT&T duct bank: 890 linear feet
AT&T manholes: 1 each
FPL/Gulf Power duct bank: 915 linear feet
FPL/Gulf Power manholes: 2 each



New utility conduits being installed by CW Roberts contractors.

- Crews are also working to complete utility conduit installation (FPL, AT&T, WOW) west of SR 79 to Cabana Cay Circle and a new storm sewer installed along Front Beach Road from Cabana Cay Cir to western leg of 'Y'.
- Upcoming in July, there are plans to begin construction of storm sewer and utility relocations along Arnold Road within the 'Y' area and north of San Vincente St.

Powell Adams Improvements



New traffic signal at intersection of Front Beach Road & Powell Adams, looking east on Front Beach Road.

What's Next

Our August edition will focus on design and safety improvements for CRA Segments 4.1, 4.2 and 4.3. We will provide more in-depth information on what you can expect as we move forward with the next segments of roadway improvements, so be watching for that.

We are pleased to provide these newsletter updates to you and would like to grow our email distribution list. If you know someone who would benefit from receiving our newsletter and would like to join our list, please have them email Krista Townsend at ktownsend@corradino.com to request to opt-in.

Additional Resources

[Community Redevelopment Agency Projects](#)

[Panama City Beach – Front Beach Road Streetscape Design Manual](#)

[CRA Past Accomplishments](#)

[CRA Fiscal Year 2021 Annual Report](#)

[City of Panama City Beach Facebook Page](#)

Public Records Requests: cra@pcbfl.gov

Newsletter Email Opt-In: ktownsend@corradino.com

Krista Townsend
Community Outreach Specialist
The Corradino Group
Panama City Beach, FL 32407
M. 405.314.8481
F. 305.594.0755
ktownsend@corradino.com

The new traffic signal light at the intersection of Powell Adams and Front Beach Road will be fully operational during the week of July 25 – 29, 2022. Prior to the signal going live, it will be in flash mode beginning Monday, July 18th and will remain in flash mode for seven days.

Yellow flashing lights indicate motorists use caution and drive slowly through the intersection on Front Beach Road. Red flashing lights indicate motorists stop at the intersection prior to turning left or right from Powell Adams onto Front Beach Road.



For driver safety, The City of Panama City Beach is asking motorists to please follow guidance provided on the digital message boards.



Did You Know?



- A total of 865 linear feet of storm sewer lines have been laid to date which is close to 2x the length of a football field from goal post to goal post at 360'.
- A whopping total of 2,150 linear feet of water main lines have been laid to date, nearly 3x as tall as the Golden Gate Bridge in San Francisco at 745'.
- A total of 1,040 linear feet of reclaimed water lines have been laid to date, similar to the height of the Eiffel Tower in Paris which stands at 1,063'.
- A total of 1,805 linear feet of private utility duct banks have been laid to date, or 3x as tall as the Seattle Space Needle at 604'.