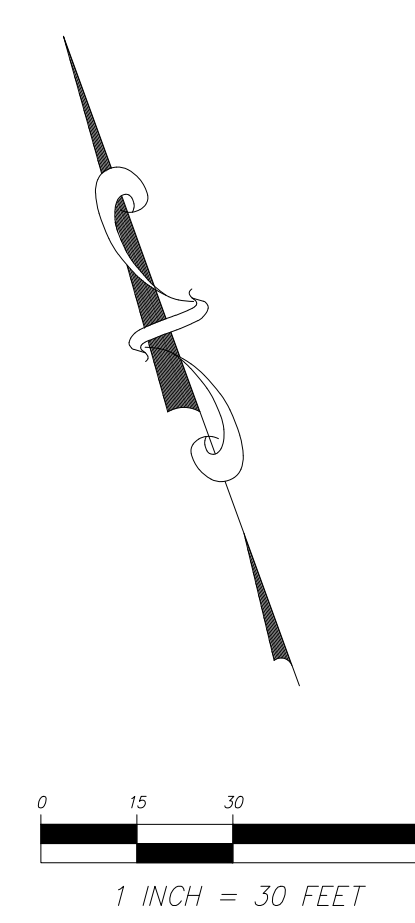
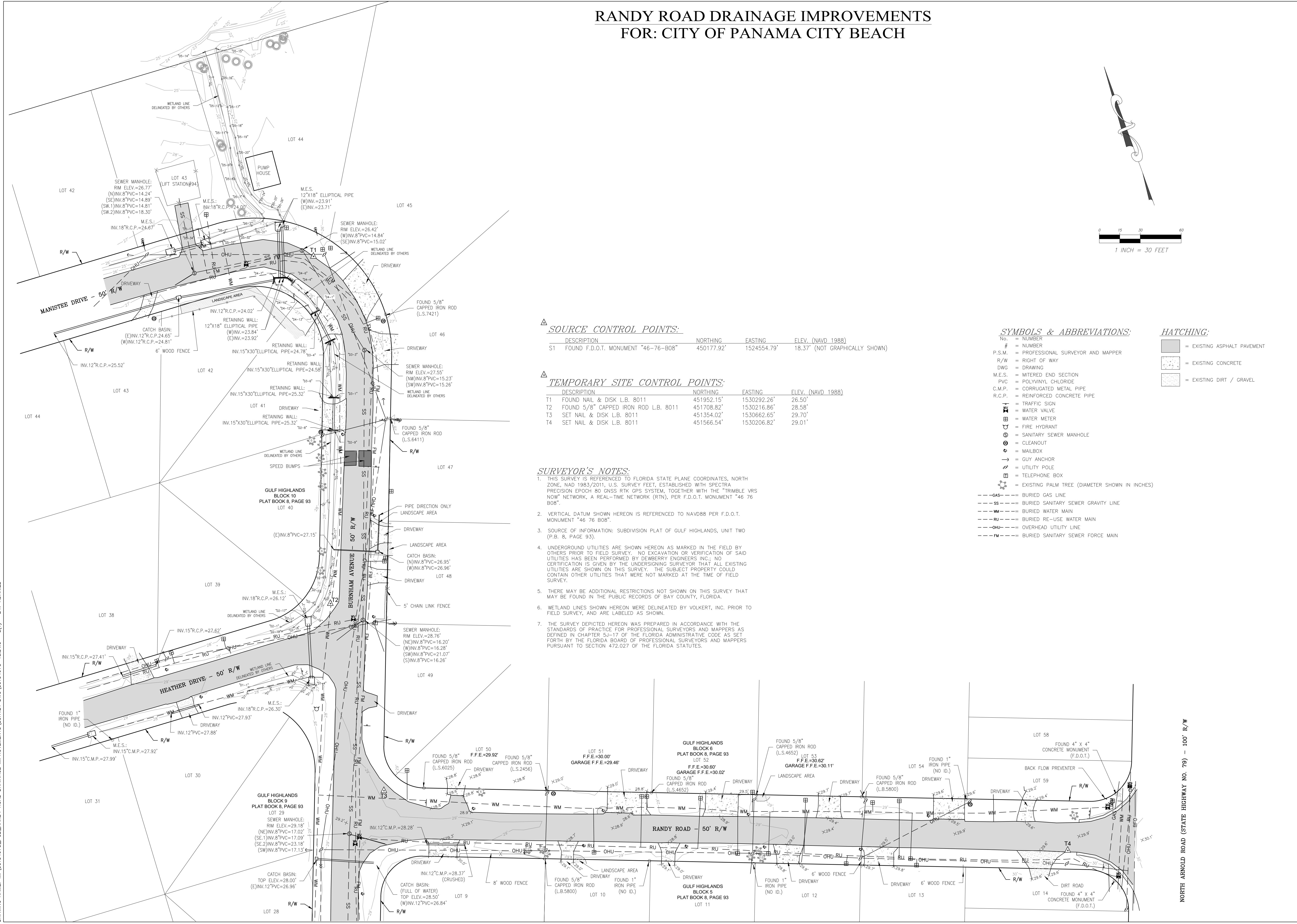


RANDY ROAD DRAINAGE IMPROVEMENTS FOR: CITY OF PANAMA CITY BEACH



△ SOURCE CONTROL POINTS:

DESCRIPTION	NORTHING	EASTING	ELEV. (NAVD 1988)
S1 FOUND F.D.O.T. MONUMENT "46-76-B08"	450177.92'	1524554.79'	18.37' (NOT GRAPHICALLY SHOWN)

△ TEMPORARY SITE CONTROL POINTS:

DESCRIPTION	NORTHING	EASTING	ELEV. (NAVD 1988)
T1 FOUND NAIL & DISK L.B. 8011	451952.15'	1530292.26'	26.50'
T2 FOUND 5/8" CAPPED IRON ROD L.B. 8011	451708.82'	1530216.86'	28.58'
T3 SET NAIL & DISK L.B. 8011	451354.02'	1530662.65'	29.70'
T4 SET NAIL & DISK L.B. 8011	451566.54'	1530206.82'	29.01'

SURVEYOR'S NOTES:

- THIS SURVEY IS REFERENCED TO FLORIDA STATE PLANE COORDINATES, NORTH ZONE, NAD 1983/2011, U.S. SURVEY FEET, ESTABLISHED WITH SPECTRA PRECISION EPOCH 80 GNSS RTK GPS SYSTEM, TOGETHER WITH THE "TRIMBLE VRS NOW" NETWORK, A REAL-TIME NETWORK (RTN), PER F.D.O.T. MONUMENT "46 76 B08".
- VERTICAL DATUM SHOWN HEREON IS REFERENCED TO NAVD88 PER F.D.O.T. MONUMENT "46 76 B08".
- SOURCE OF INFORMATION: SUBDIVISION PLAT OF GULF HIGHLANDS, UNIT TWO (P.B. 8, PAGE 93).
- UNDERGROUND UTILITIES ARE SHOWN HEREON AS MARKED IN THE FIELD BY OTHERS PRIOR TO FIELD SURVEY. NO EXCAVATION OR VERIFICATION OF SAID UTILITIES HAS BEEN PERFORMED BY DEWBERRY ENGINEERS, INC.; NO CERTIFICATION IS GIVEN BY THE UNDERSIGNING SURVEYOR THAT ALL EXISTING UTILITIES ARE SHOWN ON THIS SURVEY. THE SUBJECT PROPERTY COULD CONTAIN OTHER UTILITIES THAT WERE NOT MARKED AT THE TIME OF FIELD SURVEY.
- THERE MAY BE ADDITIONAL RESTRICTIONS NOT SHOWN ON THIS SURVEY THAT MAY BE FOUND IN THE PUBLIC RECORDS OF BAY COUNTY, FLORIDA.
- WETLAND LINES SHOWN HEREON WERE DELINEATED BY VOLKERT, INC. PRIOR TO FIELD SURVEY, AND ARE LABELED AS SHOWN.
- THE SURVEY DEPICTED HEREON WAS PREPARED IN ACCORDANCE WITH THE STANDARDS OF PRACTICE FOR PROFESSIONAL SURVEYORS AND MAPPERS AS DEFINED IN CHAPTER 54-17 OF THE FLORIDA ADMINISTRATIVE CODE AS SET FORTH BY THE FLORIDA BOARD OF PROFESSIONAL SURVEYORS AND MAPPERS PURSUANT TO SECTION 472.027 OF THE FLORIDA STATUTES.

SYMBOLS & ABBREVIATIONS:

- No. = NUMBER
- # = NUMBER
- P.S.M. = PROFESSIONAL SURVEYOR AND MAPPER
- R/W = RIGHT OF WAY
- DWG = DRAWING
- M.E.S. = MITERED END SECTION
- PVC = POLYVINYL CHLORIDE
- C.M.P. = CORRUGATED METAL PIPE
- R.C.P. = REINFORCED CONCRETE PIPE
- T = TRAFFIC SIGN
- WV = WATER VALVE
- WM = WATER METER
- FH = FIRE HYDRANT
- SM = SANITARY SEWER MANHOLE
- CN = CLEANOUT
- MB = MAILBOX
- GA = GUY ANCHOR
- UR = UTILITY POLE
- TE = TELEPHONE BOX
- PT = EXISTING PALM TREE (DIAMETER SHOWN IN INCHES)

HATCHING:

- [Hatched pattern] = EXISTING ASPHALT PAVEMENT
- [Dotted pattern] = EXISTING CONCRETE
- [Cross-hatched pattern] = EXISTING DIRT / GRAVEL

- GAS --- = BURIED GAS LINE
- SS --- = BURIED SANITARY SEWER GRAVITY LINE
- WM --- = BURIED WATER MAIN
- RU --- = BURIED RE-USE WATER MAIN
- OHU --- = OVERHEAD UTILITY LINE
- FM --- = BURIED SANITARY SEWER FORCE MAIN

January 26, 2023 (12:41:33 EST)
 DRAWING NAME: M:\50134673_PCB_RANDY ROAD DRAINAGE IMPROVEMENTS\SURVEY DWG\50134673-TS.DWG BY: RDANIEL

REVISION	DATE

Dewberry
 DEWBERRY ENGINEERS, INC.
 200 ABERDEEN PARKWAY
 PANAMA CITY BEACH, FL 32413
 PHONE: 850.932.0841 FAX: 850.932.1011
 WWW.DEWBERRY.COM
 CERTIFICATE OF AUTHORIZATION NO. LB 8011

DATE SIGNED: _____
 PROFESSIONAL SURVEYOR & MAPPER No. 15918

TOPOGRAPHIC SURVEY
 SECTION 18, TOWNSHIP 03
 SOUTH, RANGE 16 WEST
 PANAMA CITY BEACH
 BAY COUNTY, FLORIDA

FB/PG	330/14
FIELD DATE	01/23/2023
DRAWING DATE	01/24/2023
BY	RWD
APPROVED	JHG
PROJECT NO.	50134673
SCALE	1" = 30'

S1

NORTH ARNOLD ROAD (STATE HIGHWAY NO. 79) - 100' R/W