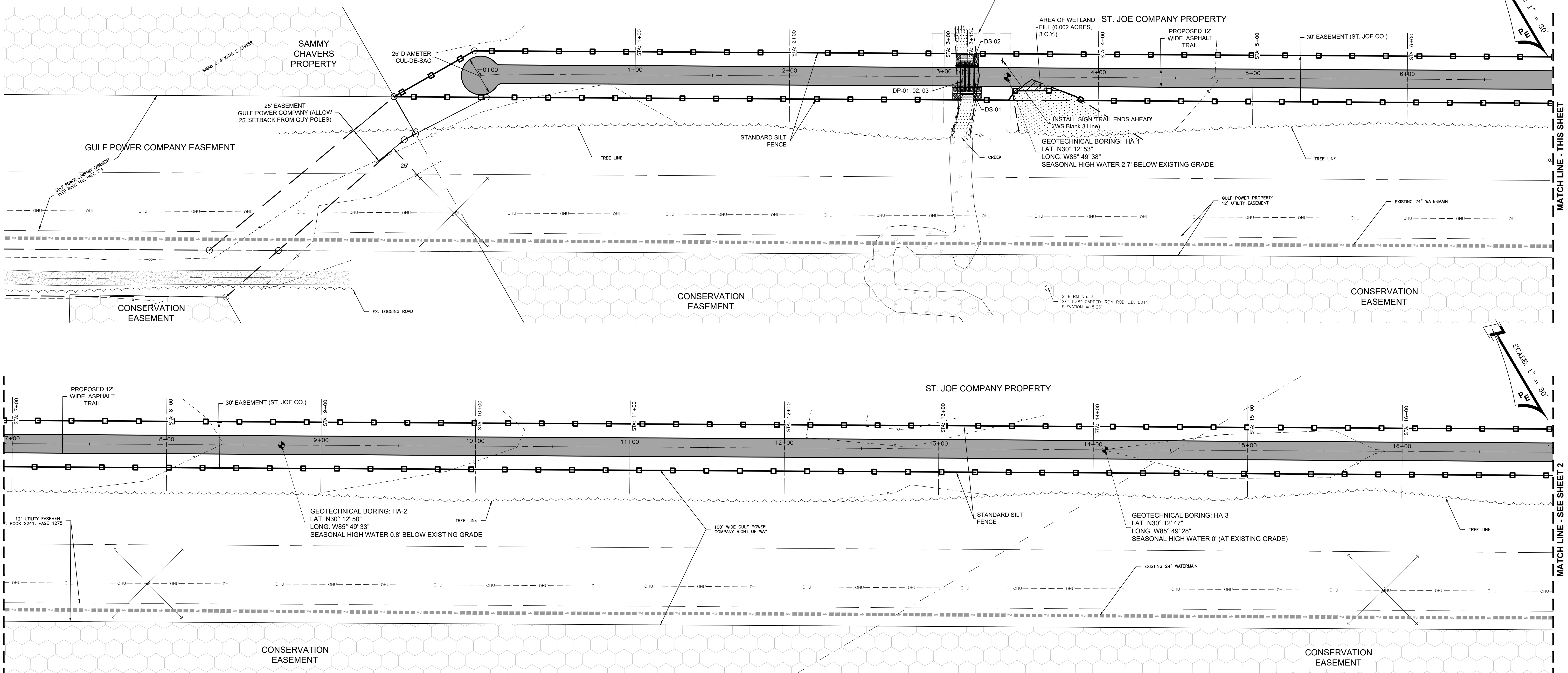


LEGEND

- TRAFFIC SIGN
- WATER METER
- TEMPORARY BENCHMARK
- CONTOUR BOLLARD / PILING
- GUY ANCHOR
- UTILITY POLE
- TELEPHONE BOX
- SPOT ELEVATION AT "X"
- CONTOUR ELEVATION AT 1' INTERVALS
- S.J.P.C. ST. JOE PAPER COMPANY
- OVERHEAD UTILITY LINE
- EXISTING CONCRETE
- DENOTES WETLANDS DELINEATED BY ECOLOGICAL RESOURCE CONSULTANTS
- DENOTES WETLAND FILL
- SILT FENCE
- GRAVITY WALL
- HAND RAIL
- GRAVITY WALL WITH HAND RAIL ON TOP

- NOTES:
- CONTRACTOR SHALL CLEAR AND GRUB AS NECESSARY FOR CONSTRUCTION.
 - ALL ACREAGE AND CUBIC YARDS SHOWN ARE APPROXIMATE.
 - ALL PAVEMENT MESSAGES, STOP BARS AND ARROWS ON THE TRAIL SHALL BE PERFORMED THERMOPLASTIC.



REV	DATE	BY	REVISIONS

SCALE: AS NOTED

DESIGNED BY: CBF

DRAWN BY: JAH

REVIEWED BY: CBF

ISSUE DATE: OCTOBER 2022

ACAD FILE NAME: 12046e1.dwg

PANHANDLE ENGINEERING, INC.

ENVIRONMENTAL ENGINEERS • CIVIL ENGINEERS • LAND PLANNERS
600 Ohio Avenue Lynn Haven, Florida 32444
(850) 763-5200 www.panhandleengineering.com

PLAN VIEW
PANAMA CITY BEACH MULTI-USE TRAIL - EAST
GAYLE'S TRAILS
PANAMA CITY BEACH, FLORIDA

James H. Slonina, P.E. 39197
Christopher B. Forehand, P.E. 58028
Stephen E. Price, P.E. 71646
J. Doug Crook, P.E. 66556
Delbert T. Horton II, P.E. 94092
Walter Z. Lewis, P.E. 94236

PROFESSIONAL ENGINEER
NO. 58028
STATE OF FLORIDA

SHEET NUMBER
1

PROJECT NUMBER
12046

Date: Oct 25, 2022, 7:13am User: ID: Jim Higdon File: P:\12046 PCB - Multiuse Paths\1 CIVIL\Folder\Drawings\12046e1.dwg

12046 PANAMA CITY BEACH MULTI-USE TRAIL - EAST GAYLE'S TRAILS PLAN VIEW SHEET 1