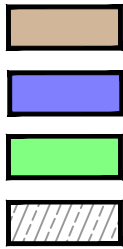


# EXHIBIT A

**“PCB City Main Campus Map”**



DENOTES  
LANDSCAPE AREA

S.F.

DENOTES SQUARE FEET

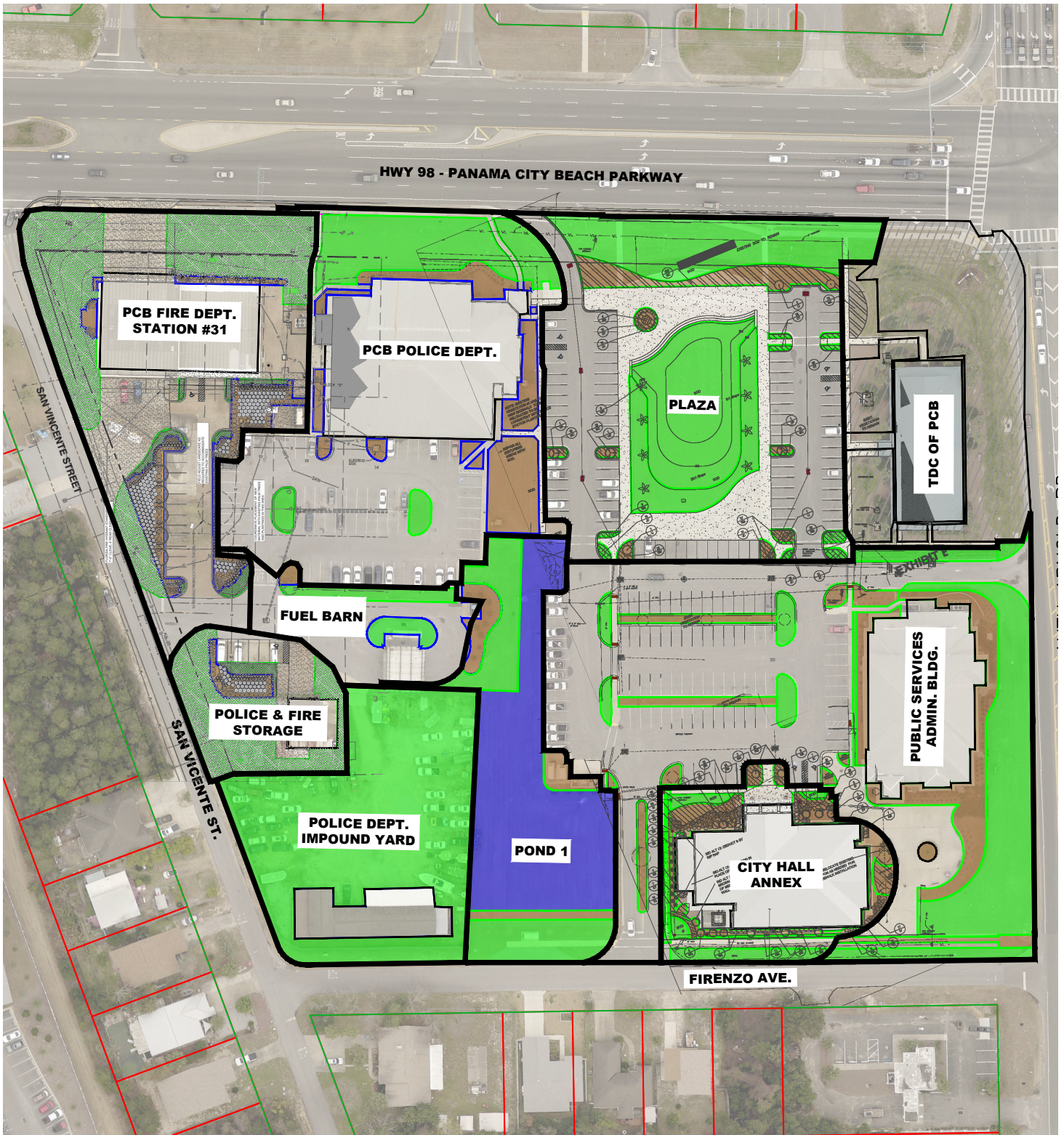
DENOTES  
POND AREA

±

DENOTES MORE OR LESS

DENOTES AREA  
TO BE MOWED

DENOTES AREA TO NOT BE  
INCLUDED IN CONTRACT

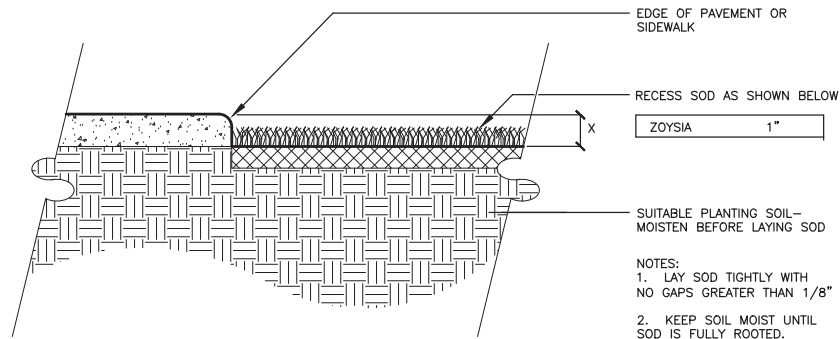


P.C.B. CITY MAIN CAMPUS LANDSCAPING AREAS  
± 165,093 S.F. (3.8 ACRES)  
NOT TO SCALE

## EXHIBIT B

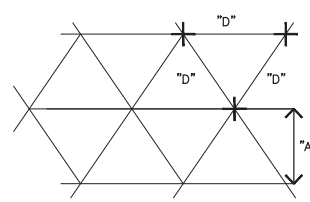
# **“Landscape Plan for Fire Station #31 and Police / Fire Storage”**





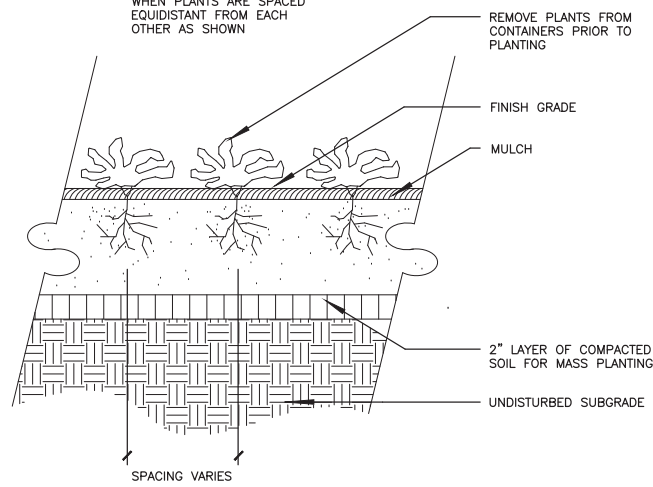
- NOTES:
1. LAY SOD TIGHTLY WITH NO GAPS GREATER THAN 1/8"
  2. KEEP SOIL MOIST UNTIL SOD IS FULLY ROOTED.
  3. DO NOT INSTALL SOD UNTIL IRRIGATION SYSTEM IS FUNCTIONAL.

**5 SOD DETAIL AT PAVING**  
LP2 SCALE: NOT TO SCALE

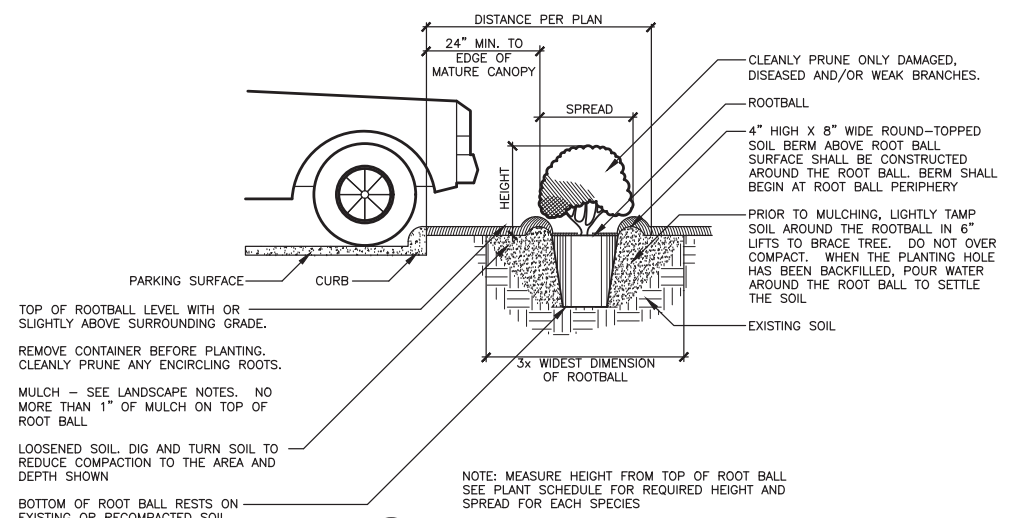


SPACING "D"	ROW "A"	NUMBER OF PLANTS
6" O.C.	5.2"	4.61
8" O.C.	6.93"	2.6
10" O.C.	8.66"	1.66
12" O.C.	10.4"	1.15
15" O.C.	13.0"	.733
18" O.C.	15.6"	.512
24" O.C.	20.8"	.33
30" O.C.	26.0"	.185
36" O.C.	30.0"	.128
48" O.C.	41.6"	.072

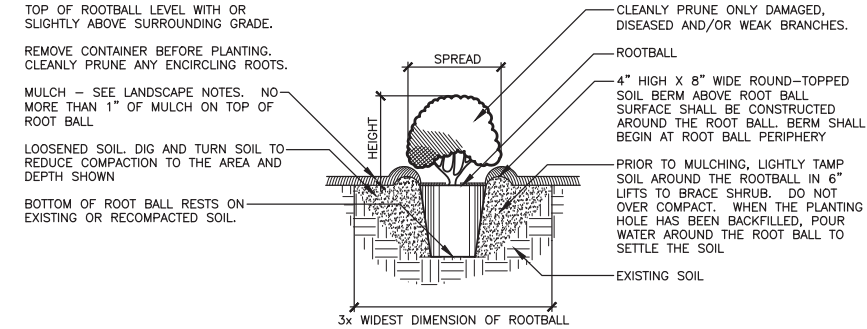
NOTE: FOR USE ONLY WHEN PLANTS ARE SPACED EQUIDISTANT FROM EACH OTHER AS SHOWN



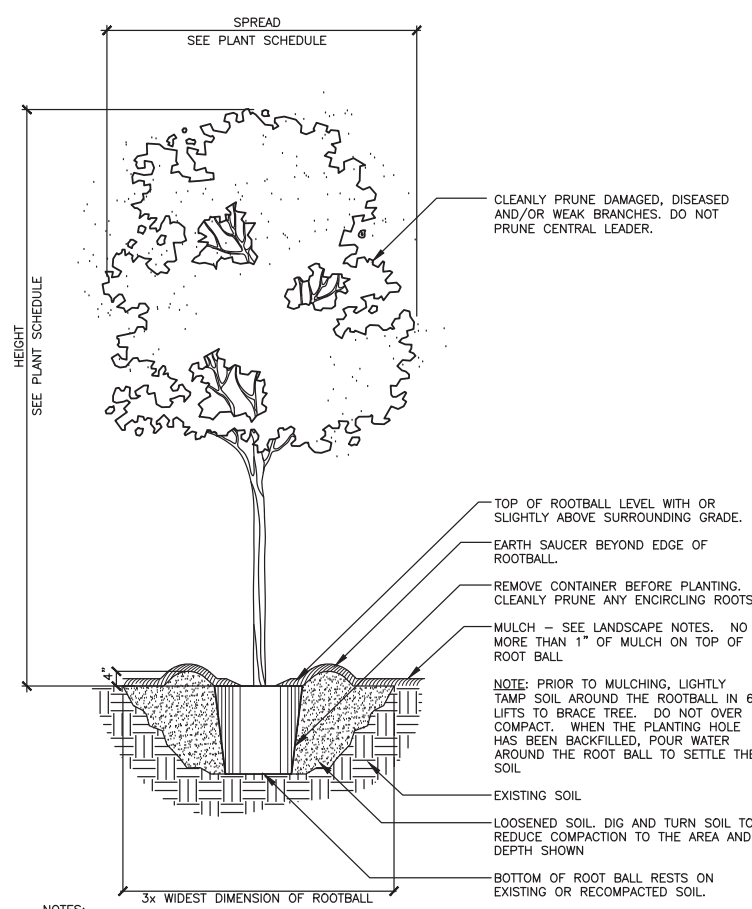
**4 GROUNDCOVER PLANTING**  
LP2 SCALE: NOT TO SCALE



**3 HEDGE PLANTING AT PARKING AREA**  
LP2 SCALE: NOT TO SCALE



**2 PLANTING DETAIL FOR SHRUBS**  
LP2 SCALE: NOT TO SCALE



**1 TREE PLANTING**  
LP2 SCALE: NOT TO SCALE

**Alan D. Holt,**  
**A.S.L.A.**  
LANDSCAPE ARCHITECT, PA  
FL LC#26000193  
P.O. BOX 2549  
PANAMA CITY, FL 32402  
TELEPHONE: (850)914-9006  
E-MAIL:alan@alandholtasla.com  
Job Number: 22026

REVISIONS				
NO.	DESCRIPTION	DRAWN	CHECKED	DATE

PHASE				
	DRAWN	CHECKED	DATE	
SCHEMATIC DESIGN			11/05/21	
DESIGN DEVELOPMENT			12/17/21	
60% DOCUMENTS			02/11/22	
90% CONSTRUCTION DOCUMENTS			03/31/22	
CONSTRUCTION DOCUMENTS			05/16/22	

**JRA ARCHITECTS** 2111 THOMAS DR., STE 100  
PANAMA CITY BEACH, FL  
PHONE: (850) 236-9832  
Commission Number: 21804

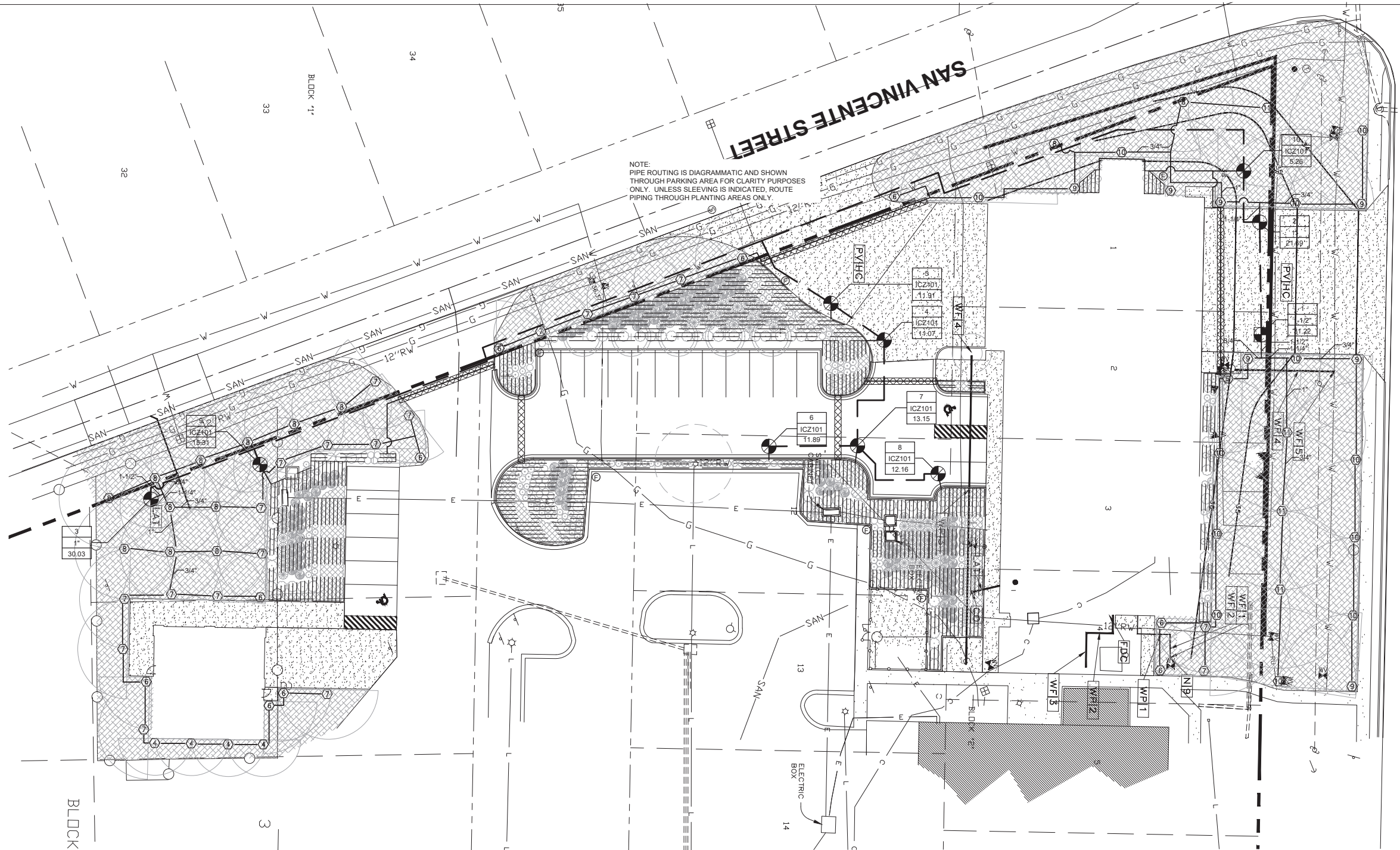
PROJECT:  
PANAMA CITY BEACH  
FIRE STATION # 31  
REPLACEMENT  
BAY COUNTY, FLORIDA

SHEET TITLE:  
**LANDSCAPE DETAILS**  
SHEET NUMBER:  
**LP2**



**SAN VINCENTE STREET**

NOTE:  
PIPE ROUTING IS DIAGRAMMATIC AND SHOWN THROUGH PARKING AREA FOR CLARITY PURPOSES ONLY. UNLESS SLEEVING IS INDICATED, ROUTE PIPING THROUGH PLANTING AREAS ONLY.



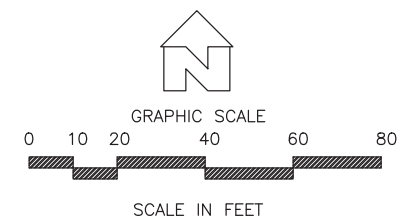
**IRRIGATION LEGEND**

	2" SCH. 40 MAINLINE, PURPLE PIPE		ZONE NUMBER
	CLASS 200 LATERALS, PURPLE PIPE - SIZE AS NOTED		VALVE SIZE
	SCH. 40 SLEEVE, SIZE AS NOTED		GALLONS PER MINUTE

- IRRIGATION NOTES:**
- LOCATE ALL UTILITIES BEFORE DIGGING. PROTECT ALL UTILITIES FROM DAMAGE DURING CONSTRUCTION.
  - IRRIGATION SYSTEM WILL USE RECLAIMED WATER. PROVIDE IRRIGATION COMPONENTS WITH NON-POTABLE MARKINGS, AND SIGNS, FOR RECLAIMED WATER. DO NOT DRINK. NOTE: ALL PIPING MUST BE PURPLE INDICATION REUSE WATER.
  - PIPE ROUTING IS DIAGRAMMATIC. PLACE IRRIGATION LINES WITHIN PLANTING AND TURF AREAS UNLESS SLEEVING IS INDICATED. ROUTE PIPING TO AVOID TREE LOCATIONS. LOCATE MAINLINE AND VALVE BOXES WITHIN PROPERTY LINES.
  - SYSTEM IS DESIGNED TO OPERATE AT 35 GPM AT 70 PSI.
  - PROCURE ALL NECESSARY PERMITS TO COMPLETE INSTALLATION OF IRRIGATION SYSTEM PER STATE AND LOCAL CODES.
  - PROVIDE SLEEVING AS INDICATED ON PLAN TO ACCOMMODATE LATERAL LINES, MAIN LINES, OR CONTROL WIRE.
  - PROVIDE A MINIMUM 12" COVER OVER LATERAL LINES AND A MINIMUM OF 18" COVER OVER MAINLINES.
  - INSTALL ALL ELECTRICAL SERVICE TO MEET LOCAL CODES.
  - PROVIDE POP-UP SPRINKLERS ONLY. MOUNT SPRINKLERS ON POLY PIPE WITH BARBED FASTENERS UNLESS OTHERWISE SPECIFIED IN PROVIDED DETAILS.
  - MOUNT HEADS FLUSH WITH FINISHED GRADE. INSTALL HEADS 6" OFF ALL SIDEWALKS AND 1" FROM BUILDING WALLS.
  - INSTALL VALVES IN 15" BOXES WITH TAMPER RESISTANT LIDS.
  - ALL IRRIGATION CONTROL WIRE TO BE 14-GAUGE WIRE. PROVIDE WHITE FOR COMMON, RED FOR HOT, AND A SPARE BLUE WIRE PARALLEL TO COMMON THROUGHOUT THE ENTIRE SYSTEM.
  - MAKE ALL WIRE SPLICES WITH WATERPROOF SPLICE KITS RATED FOR DIRECT BURIAL. NEATLY COIL 30" OF SLACK WIRE IN VALVE BOX.
  - ADJUST HEADS TO MAXIMIZE COVERAGE AND MINIMIZE OVERSPRAY.
  - SEE SHEET IP2 FOR INSTALLATION DETAILS.

**IRRIGATION SCHEDULE**

QUANTITY	KEY	MODEL (HUNTER UNLESS OTHERWISE NOTED)	GALLONS PER MINUTE
4	④	PROS-04-PRS40-CP-NP-MP1000-210 14' HALF	0.42 @ 40 PSI
10	⑥	PROS-04-PRS40-CP-NP-MP2000-90 20' QUARTER	0.43 @ 40 PSI
19	⑦	PROS-04-PRS40-CP-NP-MP2000-210 19' HALF	0.77 @ 40 PSI
13	⑧	PROS-04-PRS40-CP-NP-MP2000-360 19' FULL	1.48 @ 40 PSI
8	⑨	PROS-04-PRS40-CP-NP-MP3000-90 30' QUARTER	0.86 @ 40 PSI
12	⑩	PROS-04-PRS40-CP-NP-MP3000-210 30' HALF	1.82 @ 40 PSI
4	⑪	PROS-04-PRS40-CP-NP-MP3000-360 30' FULL	3.64 @ 40 PSI
2	1"	1" ELECTRIC REMOTE CONTROL VALVE PGV-NP-100G-S	
1	1-1/2"	1-1/2" ELECTRIC REMOTE CONTROL VALVE PGV-NP-150G-S	
7	ICZ101	1" DRIP VALVE KIT ICZ-NP-101	
1	▲	HUNTER PRO C	
1	▲	WEATHER SENSOR	
6	⊙	FLUSH VALVE	
		RAINBIRD XFD-06-12 INLINE DRIP SPACE LINE 4" OFF CURB, 12" OFF BUILDING 18" O.C.	



**Alan D. Holt,**  
**A.S.L.A.**  
**LANDSCAPE ARCHITECT, PA**  
FL LC#26000193  
P.O. BOX 2549  
PANAMA CITY, FL 32402  
TELEPHONE: (850)914-9006  
E-MAIL:alan@alandholtasla.com  
Job Number: 22026

**REVISIONS**

NO.	DESCRIPTION	DRAWN	CHECKED	DATE

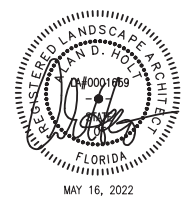
PHASE	DRAWN	CHECKED	DATE
SCHEMATIC DESIGN			11/05/21
DESIGN DEVELOPMENT			12/17/21
60% DOCUMENTS			02/11/22
90% CONSTRUCTION DOCUMENTS			05/31/22
CONSTRUCTION DOCUMENTS			05/16/22

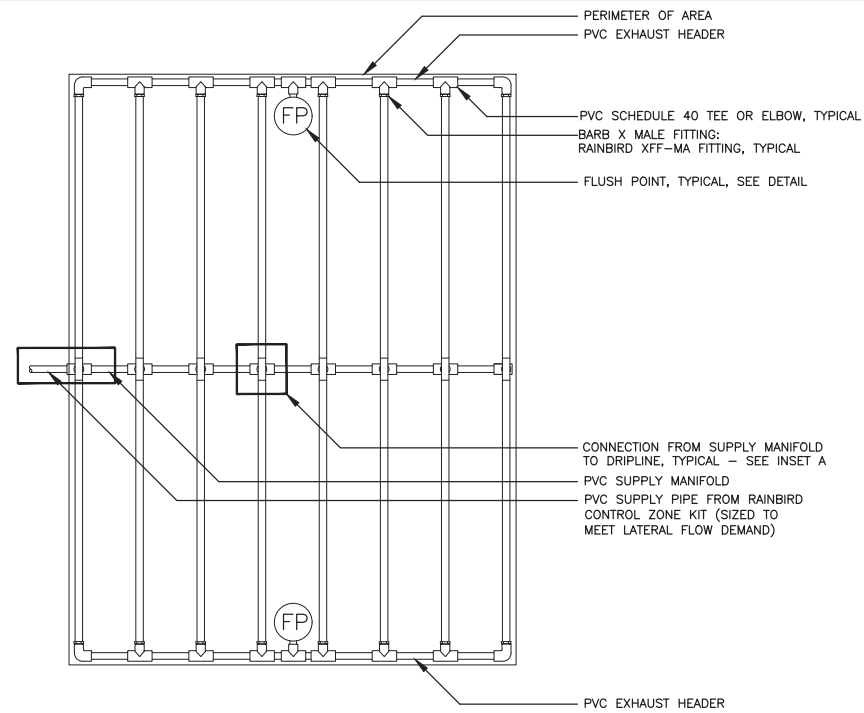
**JRA ARCHITECTS** 2211 THOMAS DR., STE 100  
PANAMA CITY BEACH, FL  
PHONE: (850) 236-9832  
Commission Number: 21804

**PROJECT:**  
PANAMA CITY BEACH  
FIRE STATION # 31  
REPLACEMENT  
BAY COUNTY, FLORIDA

**SHEET TITLE:**  
**IRRIGATION PLAN**

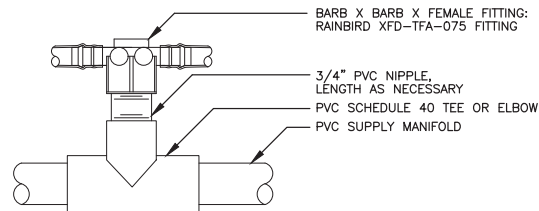
**SHEET NUMBER:**  
IP1





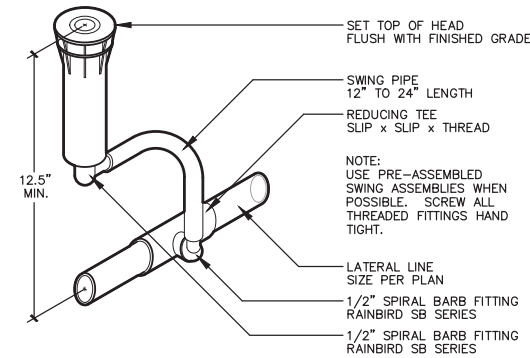
- NOTES:
- DISTANCE BETWEEN LATERAL ROWS AND EMITTER SPACING TO BE BASED ON SOIL TYPE, PLANT MATERIALS AND CHANGES IN ELEVATION. SEE INSTALLATION SPECIFICATIONS ON RAIN BIRD WEB SITE (WWW.RAINBIRD.COM) FOR SUGGESTED SPACING.
  - LENGTH OF LONGEST DRIPLINE LATERAL SHOULD NOT EXCEED THE MAXIMUM SPACING SHOWN IN THE ACCOMPANYING TABLE.
  - WHEN USING 17MM INSERT FITTINGS WITH DESIGN PRESSURE OVER 50PSI, IT IS RECOMMENDED THAT STAINLESS STEEL CLAMPS BE INSTALLED ON EACH FITTING.

**7 XFD ON-SURFACE DRIPLINE CENTER FEED LAYOUT**  
IP2 SCALE: N.T.S.

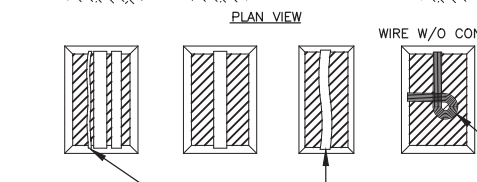
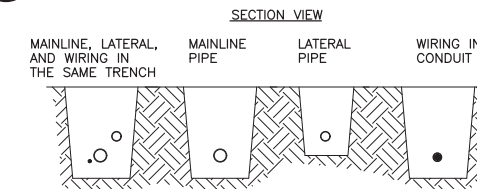


**INSET A**

Inlet Pressure psi	12" Spacing		18" Spacing		24" Spacing	
	Nominal Flow (gph)	Nominal Flow (gph)	Nominal Flow (gph)	Nominal Flow (gph)	Nominal Flow (gph)	Nominal Flow (gph)
15	0.6	0.9	0.6	0.9	0.6	0.9
20	273	155	314	250	424	322
30	318	169	353	294	508	368
40	360	230	413	350	586	414
50	395	255	465	402	652	474
60	417	285	528	420	720	488
60	460	290	596	455	780	514

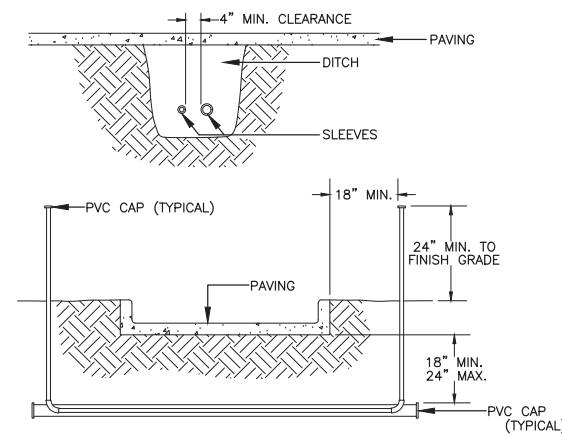


**3 SPRAYHEAD DETAIL**  
IP2 SCALE: 1/4"=1"  
© 2001 ALAN D. HOLT, A.S.L.A.



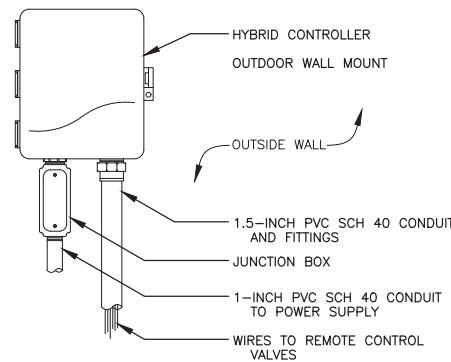
- RUN WIRING BENEATH AND BESIDE MAINLINE. TAPE AND BUNDLE AT 10-FOOT INTERVALS.
- ALL SOLVENT WELD PLASTIC PIPING TO BE SNAKED IN TRENCH AS SHOWN.
- TIE A 24-INCH LOOP IN ALL WIRING AT CHANGES OF DIRECTION OF 30° OR GREATER. UNTIE AFTER ALL CONNECTIONS HAVE BEEN MADE.

**2 PIPE & WIRE TRENCHING**  
IP2 SCALE: N.T.S.

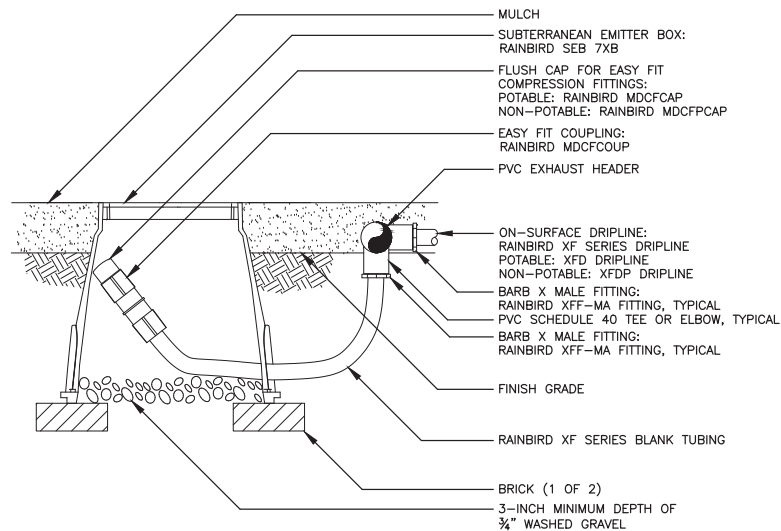


- NOTES:
- ALL PVC IRRIGATION SLEEVES TO BE SCHEDULE 40 PIPE.
  - ALL JOINTS TO BE SOLVENT WELDED AND WATERTIGHT.
  - WHERE THERE IS MORE THAN ONE SLEEVE, EXTEND THE SMALLER SLEEVE TO 24-INCHES MINIMUM ABOVE FINISH GRADE.
  - MECHANICALLY TAMP TO 95% PROCTOR.

**1 SLEEVING DETAIL**  
IP2 SCALE: N.T.S.

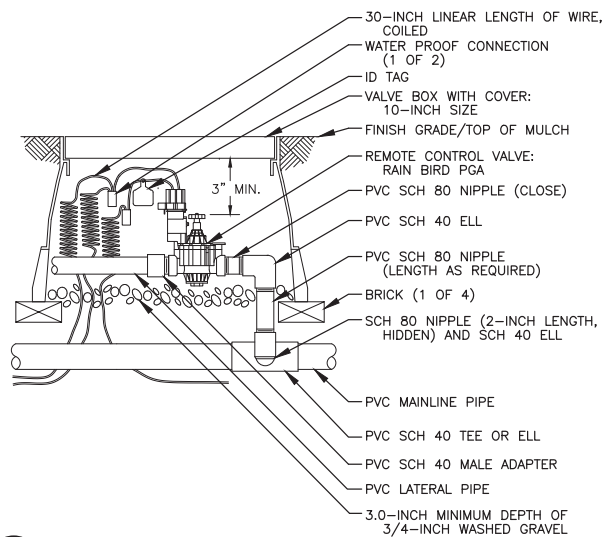


**5 HYBRID CONTROLLER**  
IP2 SCALE: N.T.S.



**6 FLUSH POINT DETAIL**  
IP2 SCALE: N.T.S.

- NOTE:
- ALLOW A MINIMUM OF 6-INCHES OF DRIPLINE TUBING IN VALVE BOX IN ORDER TO DIRECT FLUSHED WATER OUTSIDE VALVE BOX.



**4 REMOTE CONTROL VALVE**  
IP2 SCALE: N.T.S.

**Alan D. Holt,**  
**A.S.L.A.**

**LANDSCAPE ARCHITECT, PA**

FL LC#26000193  
P.O. BOX 2549  
PANAMA CITY, FL 32402  
TELEPHONE: (850)914-9006  
E-MAIL:alan@alandholtasla.com

Job Number: 22026

REVISIONS				
NO.	DESCRIPTION	DRAWN	CHECKED	DATE
PHASE				
		DRAWN	CHECKED	DATE
SCHEMATIC DESIGN				11/05/21
DESIGN DEVELOPMENT				12/17/21
60% DOCUMENTS				02/11/22
90% CONSTRUCTION DOCUMENTS				03/31/22
CONSTRUCTION DOCUMENTS				05/16/22

**JRA ARCHITECTS** 2211 THOMAS DR., STE 100  
PANAMA CITY BEACH, FL  
PHONE: (850) 236-9832  
Commission Number: 21804

PROJECT:  
PANAMA CITY BEACH  
FIRE STATION # 31  
REPLACEMENT  
BAY COUNTY, FLORIDA

SHEET TITLE:  
**IRRIGATION DETAILS**

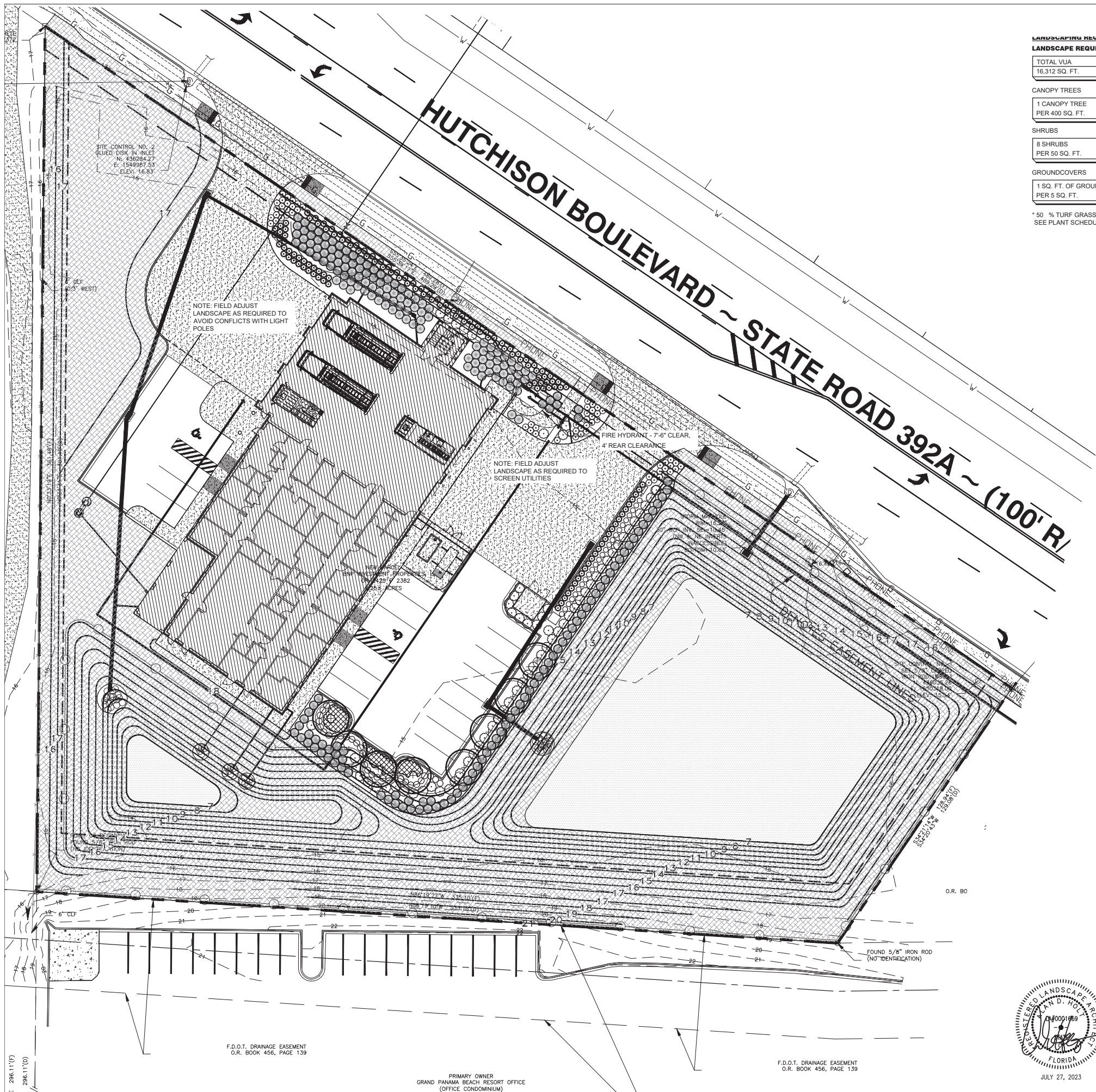
SHEET NUMBER:  
IP2



# EXHIBIT C

## **“Landscape Plan for Fire Station #32”**





**LANDSCAPING REQUIREMENTS**  
**LANDSCAPE REQUIRED/PROVIDED - PER TYPICAL VUA STANDARDS**

TOTAL VUA	PERCENTAGE REQUIREMENT	REQUIRED LANDSCAPE AREA
16,312 SQ. FT.	20%	3,262 SQ. FT.

CANOPY TREES		
1 CANOPY TREE PER 400 SQ. FT.	REQUIRED	PROVIDED
	8	8

SHRUBS		
8 SHRUBS PER 50 SQ. FT.	REQUIRED	PROVIDED
	522	522

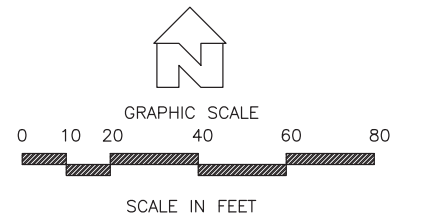
  

GROUNDCOVERS		
1 SQ. FT. OF GROUNDCOVER PER 5 SQ. FT.	REQUIRED	PROVIDED
	712	712

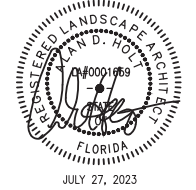
\* 50 % TURF GRASS SUBSTITUTION CLAIMED.  
 SEE PLANT SCHEDULE FOR TOTAL SOD QUANTITY.

**LANDSCAPE LEGEND**

GROUNDCOVER	
[Symbol]	49,000± S.F. INCLUDING 10% FOR WASTE 'EMERALD' ZOYSIA ZOYSIA JAPONICA 'EMERALD'
[Symbol]	12,000± S.F. INCLUDING 10% FOR WASTE SEEDED AREA
[Symbol]	28 VARIEGATED FLAX LILY DIANELLA TASMANICA 'VARIEGATA' 1 GAL. 3" O.C.
[Symbol]	63 'CORAL DRIFT' ROSE ROSA 'MEIDRIFORA' 3 GAL. 30" O.C.
[Symbol]	130 'PARSONS' JUNIPER JUNIPERUS CHINENSIS 'PARSONII' 1 GAL. 30" O.C.
[Symbol]	136 PURPLE MUHLY GRASS MUHLENBERGIA CAPILLARIS 1 GAL. 42" O.C.
[Symbol]	70 FAKAHATCHEE GRASS TRIPSACUM DACTYLOIDES 1 GAL. 42" O.C.
[Symbol]	55 DWARF YAUPON HOLLY ILEX VOMITORIA 'NANA' 3 GAL. 30" O.C.
[Symbol]	68 PINEAPPLE GUAVA ACCA SELLOWIANA 3 GAL. 4" O.C.
[Symbol]	5 'MUSKOGEE' CRAPE MYRTLE LAGERSTROEMIA INDICA 'MUSKOGEE' 30 GAL. MIN. 3 STEMS @ 1' CAL.



- LANDSCAPE NOTES:**
1. ALL PLANT MATERIAL FLORIDA #1 OR BETTER.
  2. FERTILIZE ALL PLANTINGS WITH OSMOCOTE OR OTHER APPROVED SLOW RELEASE FERTILIZER AT MANUFACTURER'S RECOMMENDED RATE BEFORE MULCHING.
  3. DECREASE PLANT SPACING AS REQUIRED TO ALLOW PLACEMENT OF THE DESIGNATED NUMBER OF PLANTS PER GROUPING.
  4. APPLY GASARON OR OTHER APPROVED PRE-EMERGENT HERBICIDE TO ALL PLANTING AREAS BEFORE MULCHING.
  5. MULCH ALL AREAS OF TREE, SHRUB AND GROUNDCOVER MASS PLANTINGS WITH 3" PINESTRAW MULCH.
  6. SOD ALL DISTURBED AREAS.
  7. AUTOMATIC IRRIGATION SYSTEM TO PROVIDE 100% COVERAGE OF ALL LANDSCAPE AREAS.
  8. PROVIDE BACKFLOW PREVENTION PER CITY REQUIREMENTS.
  9. PROVIDE RAIN SHUT OFF DEVICE PER FL. STATE LAW.



**Alan D. Holt,**  
**A.S.L.A.**  
**LANDSCAPE ARCHITECT, PA**  
 FL LC#26000193  
 P.O. BOX 2549  
 PANAMA CITY, FL 32402  
 TELEPHONE: (850)914-9006  
 E-MAIL: alan@alandholtasla.com  
 Job Number: 23064

**REVISIONS**

NO.	DESCRIPTION	DRAWN	CHECKED	DATE

PHASE	DRAWN	CHECKED	DATE
95% DOCUMENTS			05/10/23
BID DOCUMENTS			08/01/23

**JRA ARCHITECTS** 2211 THOMAS DR., STE 100  
 PANAMA CITY BEACH, FL  
 PHONE: (850) 236-9832  
 Commission Number: 21804

**McNEIL-CARROLL ENGINEERING, INC.** 17600 Panama City Beach Parkway  
 Panama City Beach, Florida 32413  
 Phone: 850-294-1790  
 Fax: 850-294-1791  
 Professional Engineering Consultants  
 STATE OF FLORIDA CERTIFICATE OF AUTHORIZATION NUMBER 7288

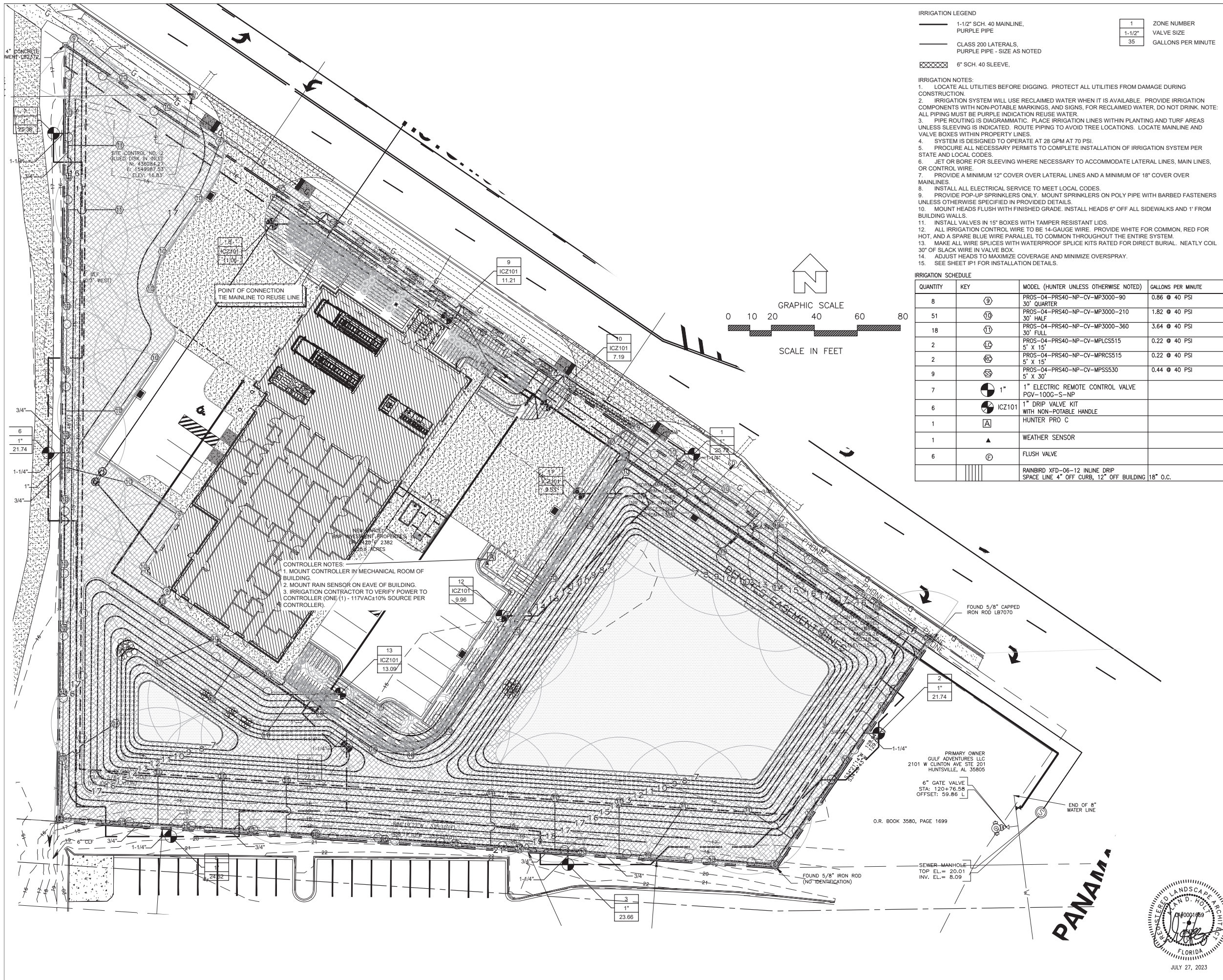
**PROJECT:**  
 PANAMA CITY BEACH  
 FIRE STATION #32  
 HUTCHISON BLVD

**BAY COUNTY, FLORIDA**

**SHEET TITLE:**  
 LANDSCAPE PLAN

**SHEET NUMBER:**  
 LP1





**IRRIGATION LEGEND**

— 1-1/2" SCH. 40 MAINLINE, PURPLE PIPE	1	ZONE NUMBER
— CLASS 200 LATERALS, PURPLE PIPE - SIZE AS NOTED	1-1/2"	VALVE SIZE
XXXXX 6" SCH. 40 SLEEVE	35	GALLONS PER MINUTE

- IRRIGATION NOTES:**
- LOCATE ALL UTILITIES BEFORE DIGGING. PROTECT ALL UTILITIES FROM DAMAGE DURING CONSTRUCTION.
  - IRRIGATION SYSTEM WILL USE RECLAIMED WATER WHEN IT IS AVAILABLE. PROVIDE IRRIGATION COMPONENTS WITH NON-POTABLE MARKINGS, AND SIGNS, FOR RECLAIMED WATER. DO NOT DRINK. NOTE: ALL PIPING MUST BE PURPLE INDICATION REUSE WATER.
  - PIPE ROUTING IS DIAGRAMMATIC. PLACE IRRIGATION LINES WITHIN PLANTING AND TURF AREAS UNLESS SLEEVING IS INDICATED. ROUTE PIPING TO AVOID TREE LOCATIONS. LOCATE MAINLINE AND VALVE BOXES WITHIN PROPERTY LINES.
  - SYSTEM IS DESIGNED TO OPERATE AT 28 GPM AT 70 PSI.
  - PROCURE ALL NECESSARY PERMITS TO COMPLETE INSTALLATION OF IRRIGATION SYSTEM PER STATE AND LOCAL CODES.
  - JET OR BORE FOR SLEEVING WHERE NECESSARY TO ACCOMMODATE LATERAL LINES, MAIN LINES, OR CONTROL WIRE.
  - PROVIDE A MINIMUM 12" COVER OVER LATERAL LINES AND A MINIMUM OF 18" COVER OVER MAINLINES.
  - INSTALL ALL ELECTRICAL SERVICE TO MEET LOCAL CODES.
  - PROVIDE POP-UP SPRINKLERS ONLY. MOUNT SPRINKLERS ON POLY PIPE WITH BARBED FASTENERS UNLESS OTHERWISE SPECIFIED IN PROVIDED DETAILS.
  - MOUNT HEADS FLUSH WITH FINISHED GRADE. INSTALL HEADS 6" OFF ALL SIDEWALKS AND 1" FROM BUILDING WALLS.
  - INSTALL VALVES IN 15" BOXES WITH TAMPER RESISTANT LIDS.
  - ALL IRRIGATION CONTROL WIRE TO BE 14-GAUGE WIRE. PROVIDE WHITE FOR COMMON, RED FOR HOT, AND A SPARE BLUE WIRE PARALLEL TO COMMON THROUGHOUT THE ENTIRE SYSTEM.
  - MAKE ALL WIRE SPLICES WITH WATERPROOF SPLICE KITS RATED FOR DIRECT BURIAL. NEATLY COIL 30' OF SLACK WIRE IN VALVE BOX.
  - ADJUST HEADS TO MAXIMIZE COVERAGE AND MINIMIZE OVERSPRAY.
  - SEE SHEET IP1 FOR INSTALLATION DETAILS.

**IRRIGATION SCHEDULE**

QUANTITY	KEY	MODEL (HUNTER UNLESS OTHERWISE NOTED)	GALLONS PER MINUTE
8	9	PROS-04-PRS40-NP-CV-MP3000-90 30' QUARTER	0.86 @ 40 PSI
51	10	PROS-04-PRS40-NP-CV-MP3000-210 30' HALF	1.82 @ 40 PSI
18	11	PROS-04-PRS40-NP-CV-MP3000-360 30' FULL	3.64 @ 40 PSI
2	12	PROS-04-PRS40-NP-CV-MPLCS515 5' X 15'	0.22 @ 40 PSI
2	13	PROS-04-PRS40-NP-CV-MPRCS515 5' X 15'	0.22 @ 40 PSI
9	14	PROS-04-PRS40-NP-CV-MPSS530 5' X 30'	0.44 @ 40 PSI
7	15	1" ELECTRIC REMOTE CONTROL VALVE PGV-100G-S-NP	
6	16	1" DRIP VALVE KIT WITH NON-POTABLE HANDLE HUNTER PRO C	
1	17	WEATHER SENSOR	
6	18	FLUSH VALVE	
		RAINBIRD XFD-06-12 INLINE DRIP SPACE LINE 4" OFF CURB, 12" OFF BUILDING 18" O.C.	

- CONTROLLER NOTES:**
- MOUNT CONTROLLER IN MECHANICAL ROOM OF BUILDING.
  - MOUNT RAIN SENSOR ON EAVE OF BUILDING.
  - IRRIGATION CONTRACTOR TO VERIFY POWER TO CONTROLLER (ONE (1) - 117VAC/10% SOURCE PER CONTROLLER).

**Alan D. Holt,  
A.S.L.A.**

**LANDSCAPE  
ARCHITECT, PA**

FL LC#26000193  
P.O. BOX 2549  
PANAMA CITY, FL 32402  
TELEPHONE: (850)914-9006  
E-MAIL: alan@alandholtsla.com

Job Number: 23064

**REVISIONS**

NO.	DESCRIPTION	DRAWN	CHECKED	DATE

**PHASE**

NO.	DESCRIPTION	DRAWN	CHECKED	DATE
95X	DOCUMENTS			05/10/23
BID	DOCUMENTS			08/01/23

**JRA ARCHITECTS** 2211 THOMAS DR., STE 100  
PANAMA CITY BEACH, FL  
PHONE: (850) 236-9832  
Commission Number: 21804

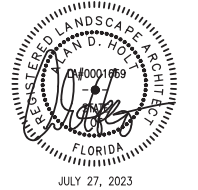
**McNEIL-CARROLL ENGINEERING, INC.** 17600 Panama City Beach Parkway  
Panama City Beach, Florida 32410  
Phone: 850-294-1790  
Fax: 850-294-1791  
Professional Engineering Consultants  
STATE OF FLORIDA CERTIFICATE OF AUTHORIZATION NUMBER 7288

**PROJECT:**  
PANAMA CITY BEACH  
FIRE STATION #32  
HUTCHISON BLVD

BAY COUNTY, FLORIDA

**SHEET TITLE:**  
IRRIGATION  
PLAN

**SHEET NUMBER:**  
IP1



**PANAMA CITY BEACH**

PRIMARY OWNER  
GULF ADVENTURES LLC  
2101 W CLINTON AVE, STE 201  
HUNTSVILLE, AL 35895

6" GATE VALVE  
STA: 120+76.58  
OFFSET: 59.86 L

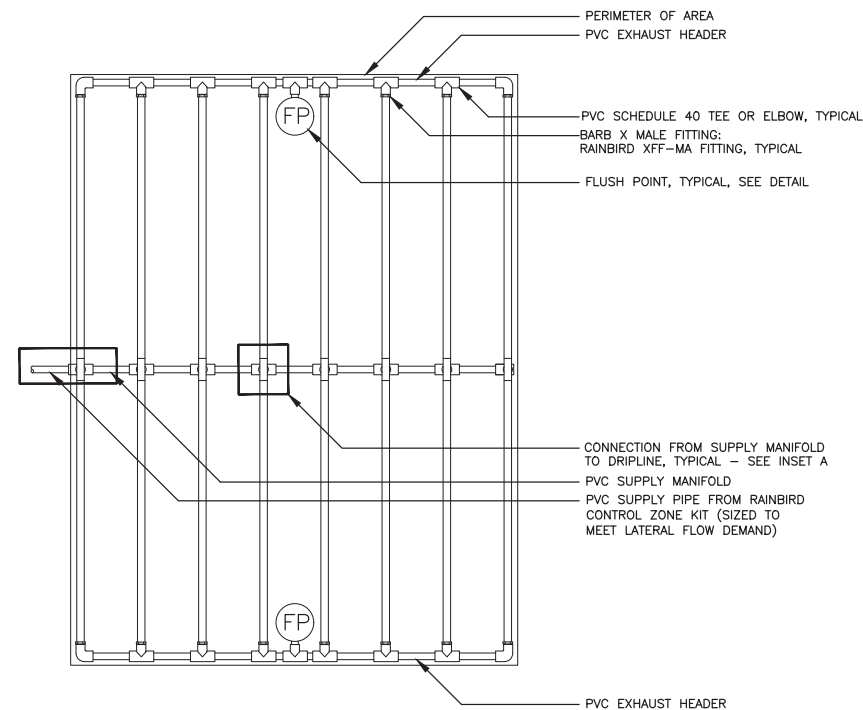
O.R. BOOK 3580, PAGE 1699

SEWER MANHOLE  
TOP EL. = 20.01  
INV. EL. = 8.09

FOUND 5/8" IRON ROD  
(NO IDENTIFICATION)

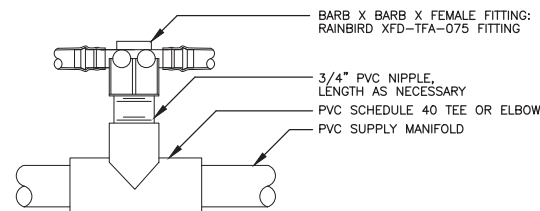
FOUND 5/8" CAPPED  
IRON ROD LB7070

END OF 8"  
WATER LINE



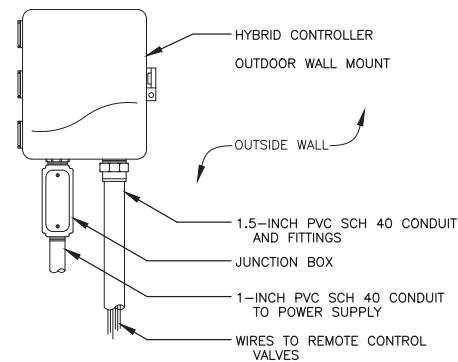
- NOTES:
- DISTANCE BETWEEN LATERAL ROWS AND EMITTER SPACING TO BE BASED ON SOIL TYPE, PLANT MATERIALS AND CHANGES IN ELEVATION. SEE INSTALLATION SPECIFICATIONS ON RAIN BIRD WEB SITE (WWW.RAINBIRD.COM) FOR SUGGESTED SPACINGS.
  - LENGTH OF LONGEST DRIPLINE LATERAL SHOULD NOT EXCEED THE MAXIMUM SPACING SHOWN IN THE ACCOMPANYING TABLE.
  - WHEN USING 17MM INSERT FITTINGS WITH DESIGN PRESSURE OVER 50PSI, IT IS RECOMMENDED THAT STAINLESS STEEL CLAMPS BE INSTALLED ON EACH FITTING.

**7 XFD ON-SURFACE DRIPLINE CENTER FEED LAYOUT**  
SCALE: N.T.S.

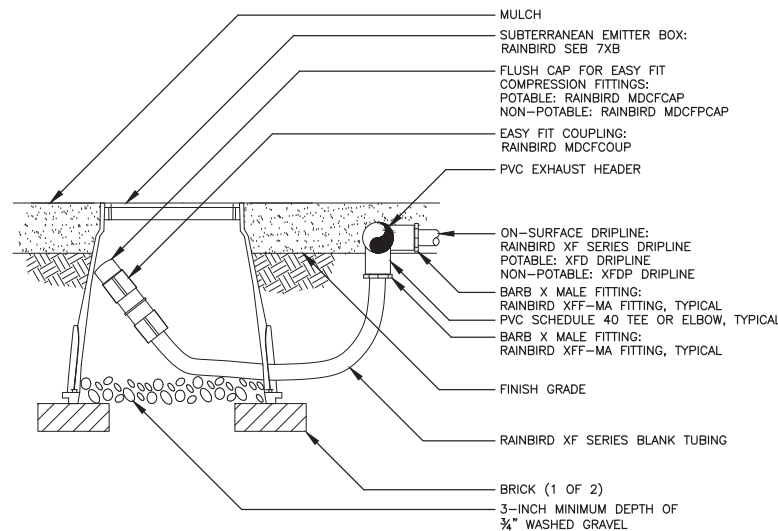


**INSET A**

XFD Dripline Maximum Lateral Lengths (Feet)						
Inlet Pressure psi	12" Spacing		18" Spacing		24" Spacing	
	Nominal Flow (gph)	Nominal Flow (gph)	Nominal Flow (gph)	Nominal Flow (gph)	Nominal Flow (gph)	Nominal Flow (gph)
15	273	155	314	250	424	322
20	318	169	353	294	508	368
30	360	230	413	350	586	414
40	395	255	465	402	652	474
50	417	285	528	420	720	488
60	460	290	596	455	780	514

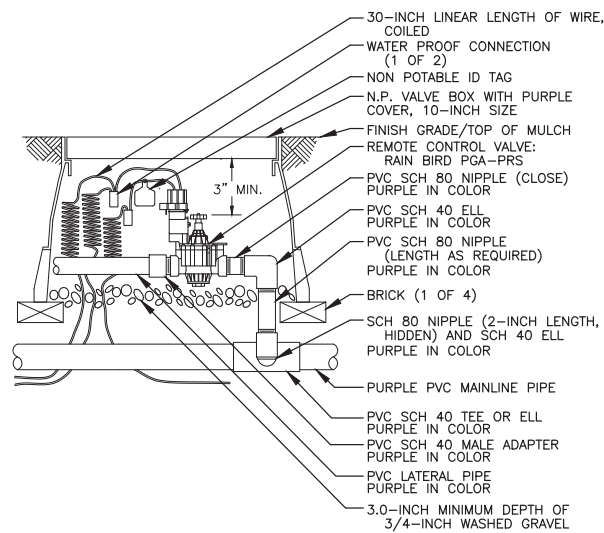


**5 HYBRID CONTROLLER**  
SCALE: N.T.S.

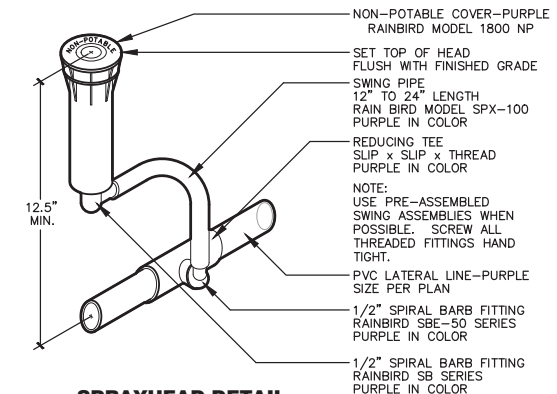


**6 FLUSH POINT DETAIL**  
SCALE: N.T.S.

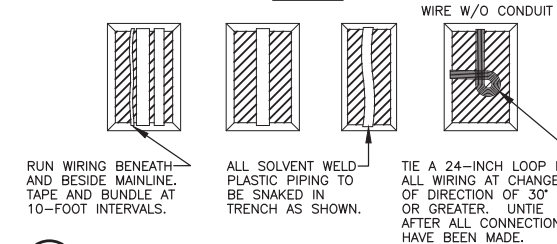
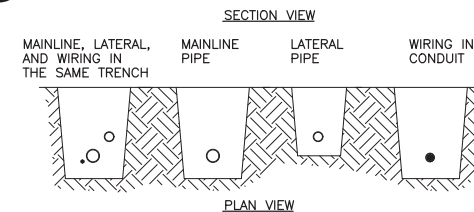
- NOTE:
- ALLOW A MINIMUM OF 6-INCHES OF DRIPLINE TUBING IN VALVE BOX IN ORDER TO DIRECT FLUSHED WATER OUTSIDE VALVE BOX.



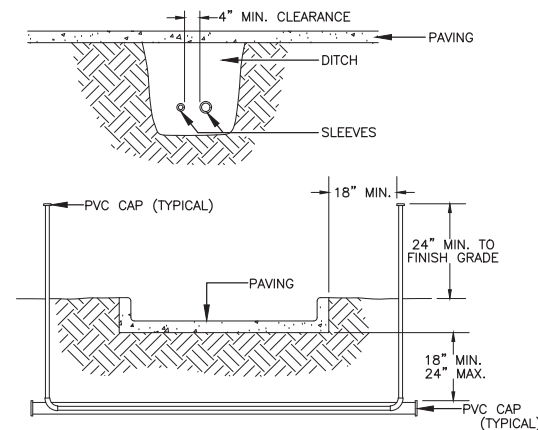
**4 REMOTE CONTROL VALVE -NON POTABLE**  
SCALE: N.T.S.



**3 W/ NON-POTABLE COVER-PURPLE**  
SCALE: 1/4"=1"



**2 PIPE & WIRE TRENCHING**  
SCALE: N.T.S.



- NOTES:
- ALL PVC IRRIGATION SLEEVES TO BE SCHEDULE 40 PURPLE PIPE.
  - ALL JOINTS TO BE SOLVENT WELDED AND WATERTIGHT.
  - WHERE THERE IS MORE THAN ONE SLEEVE, EXTEND THE SMALLER SLEEVE TO 24-INCHES MINIMUM ABOVE FINISH GRADE.
  - MECHANICALLY TAMP TO 95% PROCTOR.

**1 NON-POTABLE SLEEVING DETAIL**  
SCALE: N.T.S.

**Alan D. Holt, A.S.L.A.**  
**LANDSCAPE ARCHITECT, PA**  
FL LC#26000193  
P.O. BOX 2549  
PANAMA CITY, FL 32402  
TELEPHONE: (850)914-9006  
E-MAIL: alan@alandholtsla.com  
Job Number: 23064

REVISIONS				
NO.	DESCRIPTION	DRAWN	CHECKED	DATE
PHASE				
95X DOCUMENTS				05/10/23
BID DOCUMENTS				08/01/23

**JRA ARCHITECTS** 2211 THOMAS DR., STE 100  
PANAMA CITY BEACH, FL  
PHONE: (850) 236-9832  
Commission Number: 21804

**McNEIL-CARROLL ENGINEERING, INC.** 17600 Panama City Beach Parkway  
Panama City Beach, Florida 32413  
Phone: 850-294-1790  
Fax: 850-294-1791  
Professional Engineering Consultants  
STATE OF FLORIDA CERTIFICATE OF AUTHORIZATION NUMBER 7288

PROJECT:  
PANAMA CITY BEACH  
FIRE STATION #32  
HUTCHISON BLVD  
BAY COUNTY, FLORIDA  
SHEET TITLE:  
**IRRIGATION DETAILS**  
SHEET NUMBER:  
IP2

